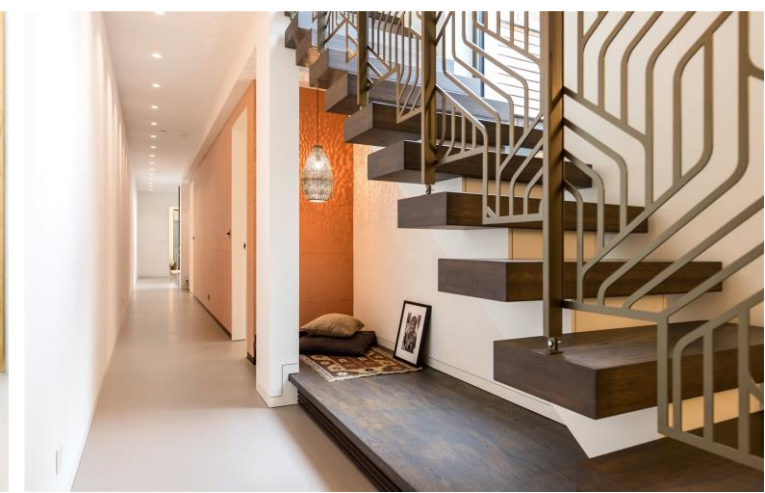




Orchard Place  
Chiswick, W4

CHESTERTONS









Chestertons are delighted to offer this unique architecturally designed 6 bedroom - 5 bathroom detached house located in quiet and gated "private road" just off the main Chiswick High Road.

The property is designed with open plan modern living in mind offering plenty of open spaces and light throughout. Comprising, open plan living room leading onto dining area and modern fitted kitchen featuring high spec built in appliances and doors leading to private garden. Cinema room and large home office. To the lower floor of the property you have the stunning master bedroom with luxury en-suite bathroom and dressing room, gym / bedroom with en-suite shower, open plan library area, 2 further en-suite bedrooms, large utility room and 2 further bedrooms with family bathroom. The property also features private gated parking which also offers 2 spaces with fast charge points for electric cars.

Ideally situated just a stones throw from the many boutique shops, cafes and restaurants on the High Road, also ideal or access to Turnham Green / Stamford Brook underground stations (District Line) as well as major road links A4/M4.

- Perfectly situated just off Chiswick High Road
- Unique architecturally designed 6 bedroom - 5 bathroom detached house
- Modern open plan living, diner/ kitchen
- Cinema Room

### £13,500 pcm

Additional tenant charges apply (fees apply to non-AST tenancies only)

Tenancy Agreement Fee: £300

References per Tenant/Guarantor: £60

Inventory check (approx. £100 – £250 inc. VAT)

[chestertons.co.uk/property-to-rent/applicable-fees](http://chestertons.co.uk/property-to-rent/applicable-fees)

Energy Efficiency Rating		Current	Potential
94-100	A	94	94
81-93	B		
69-80	C		
55-68	D		
39-54	E		
21-38	F		
1-20	G		

Not energy efficient - higher running costs

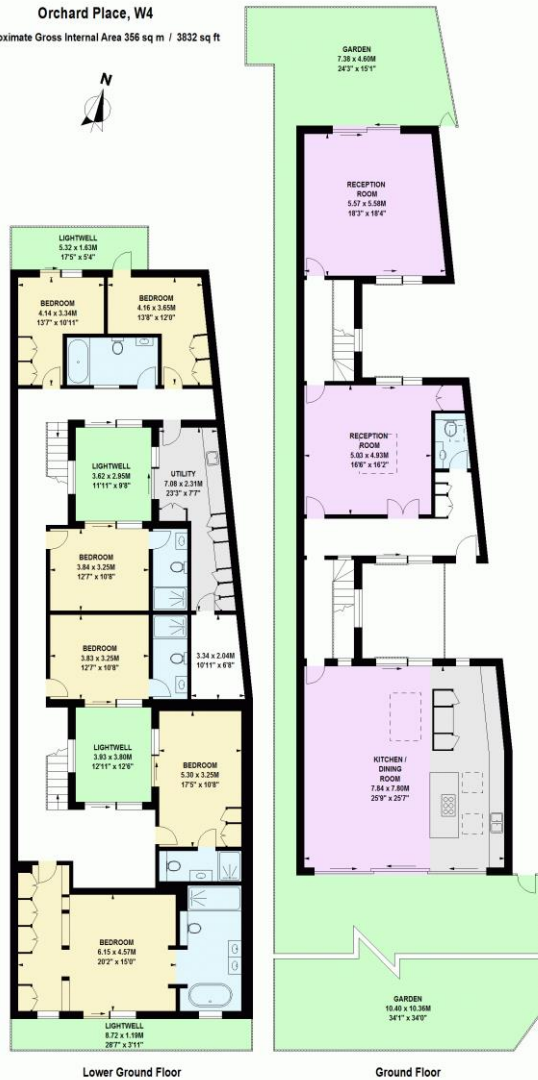
England, Scotland & Wales EU Directive 2002/91/EC

**Minimum Term:** 12 months  
**Deposit Required:** £18,692.31  
**Local Authority:** Hounslow Council  
**Council Tax Band:** H  
**EPC Rating:** B  
**Furnished, Part Furnished, Unfurnished**

### Chestertons Chiswick Lettings

155 Chiswick High Road  
 Chiswick  
 London  
 W4 2DT  
[chiswick@chestertons.co.uk](mailto:chiswick@chestertons.co.uk)  
 02087473133

Orchard Place, W4  
 Approximate Gross Internal Area 356 sq m / 3832 sq ft



Floor Plan produced for Chestertons by Mays Floorplans © Tel 020 3397 4594  
 Illustration for identification purposes only, not to scale.  
 All measurements are maximum, and include wardrobes and window bays where applicable

Chesterton Global Ltd trading as Chestertons for themselves and for the vendor of this property whose agents they are, give notice that (i) these particulars do not constitute any part of an offer or contract, (ii) all statements contained within these particulars are made without responsibility on the part of Chestertons or the vendor, (iii) whilst made in good faith, none of the statements contained within these particulars are to be relied upon as a statement or representation of fact, (iv) any intending purchasers must satisfy themselves by inspection or otherwise as to the correctness of each of the statements contained within these particulars, (v) the vendor does not make or give either Chestertons or any person in their employment any authority to make or give representation or warranty whatsoever in relation to this property. Wide angle lenses may be used. ©Copyright Chestertons | Chesterton Global Ltd | Registered Office 40 Connaught Street, Hyde Park, London W2 2AB Registered Company Number 05334580.



This paper is  
 100% recyclable