



# Gooch House

63-75 Glenthorne Road, W6

£357.69 per week  
(£1,550 pcm)

**\*\* VIDEO TOUR AVAILABLE\*\*** Chestertons are delighted to offer this stunning 1 bedroom, 1 bathroom 2nd floor apartment ideally located in popular and modern block minutes from the heart of Hammersmith.

**CHESTERTONS**





# Gooch House

63-75 Glenthorne Road, W6

- Modern 2nd floor 1 bedroom flat
- Walking distance to Hammersmith Tube Station
- Modern fitted kitchen
- Lift service
- Communal roof terrace
- EPC Rating: B

**\*\* VIDEO TOUR AVAILABLE\*\*** Chestertons are delighted to offer this stunning 1 bedroom, 1 bathroom 2nd floor apartment ideally located in popular and modern block minutes from the heart of Hammersmith.

The accommodation comprises, spacious living / dining area, modern fitted kitchen with built in appliances including dishwasher, good sized double bedroom with built in storage, modern bathroom with shower over bath. The building also offers access to communal terrace, security entry system and lift service.

The property is moments from Hammersmith and Ravenscourt Park underground stations, and is also situated just a short distance from the High Street shops and restaurants.

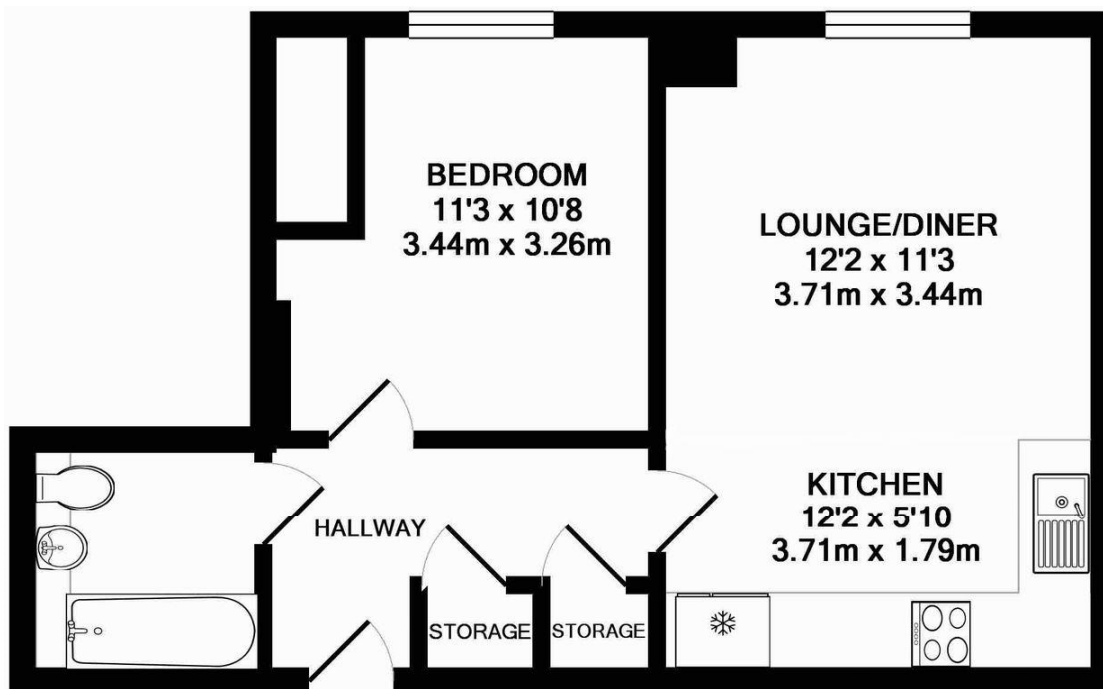
**Tenure:** To be advised  
**Furnished, Part Furnished**

Additional tenant charges apply (fees apply to non-AST tenancies only)  
Tenancy Agreement Fee: £300  
References per Tenant/Guarantor: £60  
Inventory check (approx. £100 – £250 inc. VAT)  
[chestertons.com/property-to-rent/applicable-fees](https://www.chestertons.com/property-to-rent/applicable-fees)

Energy Efficiency Rating		
	Current	Potential
Very energy efficient - lower running costs		
(92+) <b>A</b>		
(81-91) <b>B</b>	83	83
(69-80) <b>C</b>		
(55-68) <b>D</b>		
(39-54) <b>E</b>		
(21-38) <b>F</b>		
(1-20) <b>G</b>		
Not energy efficient - higher running costs		
England, Scotland & Wales EU Directive 2002/91/EC		

### ***Chestertons Chiswick Lettings***

155 Chiswick High Road  
Chiswick  
London  
W4 2DT  
[chiswick.lettings@chestertons.com](mailto:chiswick.lettings@chestertons.com)  
02087473133  
[chestertons.com](https://www.chestertons.com)



**TOTAL APPROX. FLOOR AREA 447 SQ.FT. (41.5 SQ.M.)**

Whilst every attempt has been made to ensure the accuracy of the floor plan contained here, measurements of doors, windows, rooms and any other items are approximate and no responsibility is taken for any error, omission, or mis-statement. This plan is for illustrative purposes only and should be used as such by any prospective purchaser. The services, systems and appliances shown have not been tested and no guarantee as to their operability or efficiency can be given

Made with Metropix ©2017

