



Whitlands House

Cheltenham Terrace, SW3

£2,708.33 per month
(£625 per week)

Newly refurbished and stylishly presented one bedroom flat, situated on the second floor of this highly sought-after portered block close to Sloane Square.



Whitelands House

Cheltenham Terrace, SW3

- One Bedroom
- Second Floor
- Lift
- Porter
- Off King's Road
- Nearby Sloane Square Underground

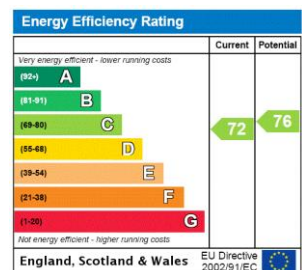


Newly refurbished and stylishly presented one bedroom flat, situated on the second floor of this highly sought-after portered block close to Sloane Square.

The flat has been redesigned and is presented to an exceptional standard with wood floors, contemporary designed kitchen and bathroom, beautiful joinery and high quality fittings.

Whitelands House is superbly run and hugely desirable portered block on the corner of Cheltenham Terrace and King's Road, in close proximity to Sloane Square. The area offers a wonderful choice of restaurants, transport amenities and cultural highlights making this an ideal home or London pied-a-terre.

Minimum Term: 1 month
Deposit Required:
Local Authority: Royal Borough of Kensington & Chelsea
Council Tax Band: D
EPC Rating: C



Chestertons Knightsbridge & Belgravia Lettings

31 Lowndes Street
 London
 SW1X 9HX
 knightsbridge@chestertons.co.uk
 02072353530
 chestertons.co.uk

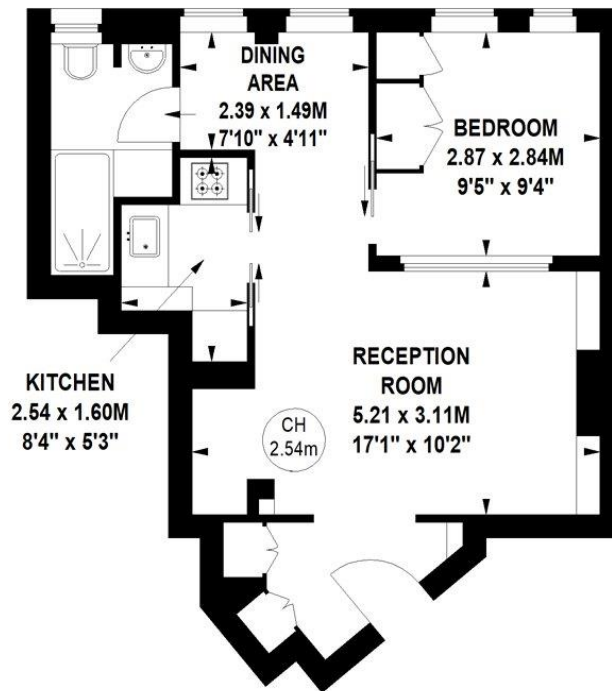
Additional tenant charges apply (fees apply to non-AST tenancies only)
 Tenancy Agreement Fee: £300
 References per Tenant/Guarantor: £60
 Inventory check (approx. £100 – £250 inc. VAT)
 chestertons.co.uk/property-to-rent/applicable-fees

Whitelands House, Cheltenham Terrace, SW3

Approximate gross internal area

44.41 sq m / 478 sq ft

Key :
CH - Ceiling Height



Second Floor

**Not to scale, for guidance only and must not be relied upon as a statement of fact.
All measurements and areas are approximate only**

