



Honiton Mansions
Flood Street, SW3

CHESTERTONS





A stunning and well-presented two bedroom two bathroom apartment situated on the third floor of a well-kept building on the corner of Kings Road and Flood Street.

- Two bedrooms
- Two bathrooms
- Modern kitchen and bathrooms
- Over 1,00sqft

£5,850 pcm


Additional tenant charges apply (fees apply to non-AST tenancies only)

Tenancy Agreement Fee: £300

References per Tenant/Guarantor: £60

Inventory check (approx. £100 – £250 inc. VAT)

chestertons.co.uk/property-to-rent/applicable-fees

Energy Efficiency Rating		Current	Potential
Very energy efficient - lower running costs			
(90-100)	A		
(81-90)	B		
(69-80)	C	81	82
(55-68)	D		
(39-54)	E		
(21-38)	F		
(1-10)	G		
Not energy efficient - higher running costs			
England, Scotland & Wales		EU Directive 2002/91/EC	

Minimum Term: 12 months
Deposit Required: £8,100.00
Local Authority:
Council Tax Band:
EPC Rating: B
Unfurnished

Chestertons Chelsea Lettings

17 Cale Street
 London
 SW3 3QR

chelsealettingsusers@chestertons.co.uk

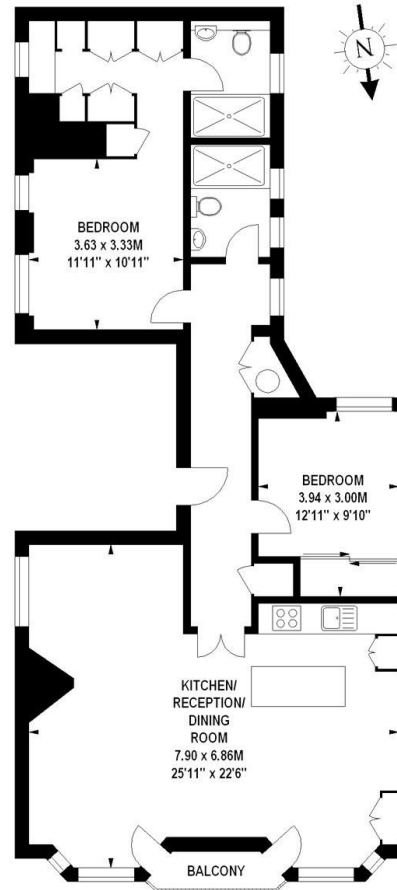
02075944750

chestertons.co.uk

Honiton Mansions, SW3

Approximate gross internal area

102.10 sq m / 1099 sq ft



Third Floor

Illustration For Identification Purposes Only. Not To Scale

*Floorplan Drawn According To RICS Guidelines

Copyright of FeaturePRO

Chesterton UK Services Limited trading as Chestertons for themselves and for the vendor of this property whose agents they are, give notice that (i) these particulars do not constitute any part of an offer or contract, (ii) all statements contained within these particulars are made without responsibility on the part of Chestertons or the vendor, (iii) whilst made in good faith, none of the statements contained within these particulars are to be relied upon as a statement or representation of fact, (iv) any intending purchasers must satisfy themselves by inspection or otherwise as to the correctness of each of the statements contained within these particulars, (v) the vendor does not make or give either Chestertons or any person in their employment any authority to make or give representation or warranty whatsoever in relation to this property. Wide angle lenses may be used. ©Copyright Chestertons | Chesterton Global Ltd | Registered Office 40 Connaught Street, Hyde Park, London W2 2AB Registered Company Number 05334580.



This paper is
100% recyclable