



Cadogan Pier
Chelsea, SW3

CHESTERTONS





The upper deck offers a bright open-plan kitchen and reception room, enhanced by windows on both sides. A well-appointed kitchen sits at one end, while the curved bow provides character at the other, alongside a convenient WC/shower room.

The lower deck features two generous bedroom suites, each with a walk-in wardrobe and private ensuite, ensuring comfort and privacy.

Curved bow and stern details give the boat an elegant profile, complemented by modern finishes throughout. Positioned on the coveted Cheyne Walk, the houseboat enjoys one of London's most historic and desirable riverfront locations.

Cadogan Pier provides a prime Chelsea setting, blending peaceful riverside living with excellent city access. King's Road's boutiques, cafés, and galleries are moments away, and Sloane Square's District and Circle lines offer effortless travel. Nearby cultural landmarks—including the Saatchi Gallery, Royal Court Theatre, and Chelsea Physic Garden—along with scenic riverside walks and renowned local schools.

- Two bedrooms
- One reception
- Three bathrooms
- Porter
- Roof terrace
- Furnished

£6,500 pcm

Additional tenant charges apply (fees apply to non-AST tenancies only)

Tenancy Agreement Fee: £300

References per Tenant/Guarantor: £60

Inventory check (approx. £100 – £250 inc. VAT)

chestertons.co.uk/property-to-rent/applicable-fees

Minimum Term: 12 months
Deposit Required: Six weeks
Local Authority: Royal Kensington and Chelsea
Council Tax Band: To be confirmed
EPC Rating: To be confirmed
Furnished, Unfurnished

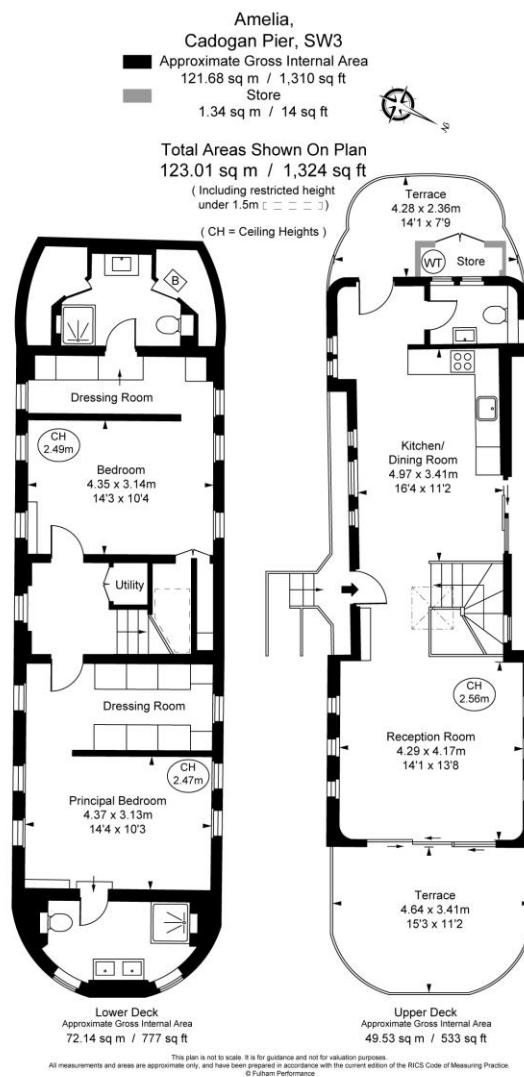
Chestertons Chelsea Lettings

17 Cale Street
London
SW3 3QR

chelsealettingsusers@chestertons.co.uk

02075944750

chestertons.co.uk



Chesterton UK Services Limited trading as Chestertons for themselves and for the vendor of this property whose agents they are, give notice that (i) these particulars do not constitute any part of an offer or contract, (ii) all statements contained within these particulars are made without responsibility on the part of Chestertons or the vendor, (iii) whilst made in good faith, none of the statements contained within these particulars are to be relied upon as a statement or representation of fact, (iv) any intending purchasers must satisfy themselves by inspection or otherwise as to the correctness of each of the statements contained within these particulars, (v) the vendor does not make or give either Chestertons or any person in their employment any authority to make or give representation or warranty whatsoever in relation to this property. Wide angle lenses may be used. ©Copyright Chestertons | Chesterton Global Ltd | Registered Office 40 Connaught Street, Hyde Park, London W2 2AB Registered Company Number 05334580.