

CHESTERTONS



Chelsea Square

Chelsea, SW3 6LF

“

This four-bedroom house in Chelsea Square is the epitome of luxury living. With four bedrooms and four bathrooms this house comes unfurnished and has ample private outside space. ”

Long let: £5,769.23 per week / £25,000 per month

4



4



4,540
sqft





Property Description

Set on the highly revered Chelsea Square is this impressive family home. Spanning almost 5,000sq feet across five floors and finished to a very high specification throughout, the property comprises of a private front garden, entrance hall with guest cloakroom, a spacious reception room with decorative fireplace, fully fitted kitchen with island and further living space.

The ground floor private garden may be accessed from all three rooms and a spiral staircase leads up to the first floor roof terrace. The first floor also houses the main bedroom suite, with bedroom, sitting room, dressing room and en-suite shower room.

An additional suite with bedroom, dressing room and en-suite can be found on the second floor, alongside a third bedroom with walk-in wardrobe and en-suite. The third floor consists of an additional bedroom with en-suite and an abundance of storage.

The lower ground floor includes a fifth bedroom with en-suite bathroom and sauna, perfect for staff accommodation and a utility room with access to three storage vaults and private patio the house has space to provide two off-street parking spaces and the residents benefit from access to the communal gardens.

Chelsea Square is ideally located for all the Kings Road has to offer, with an array of shops and transport amenities.







Chelsea Square, SW3

Approximate Gross Internal Area
393.61 sq m / 4,237 sq ft

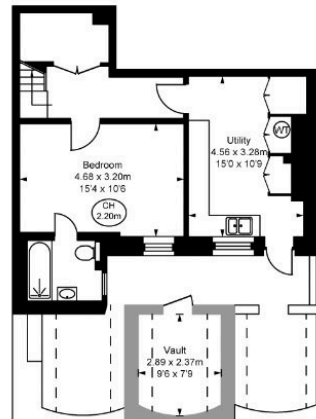
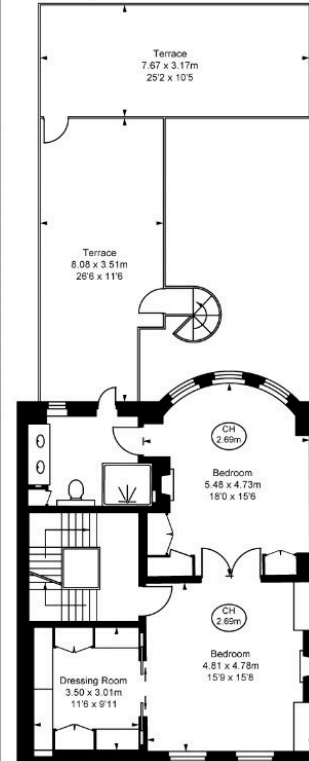
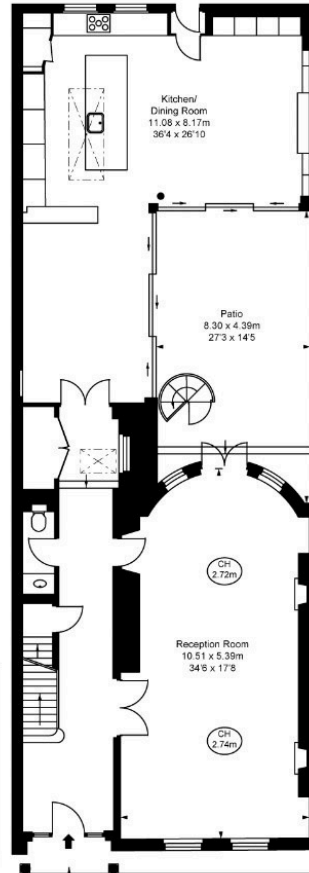
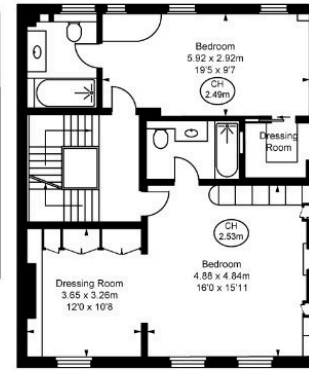
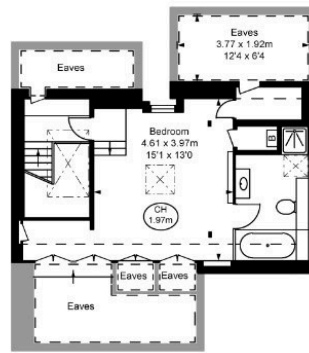
Eaves Storage
21.61 sq m / 233 sq ft

Vault
6.60 sq m / 71 sq ft

Total Areas Shown On Plan
421.82 sq m / 4,540 sq ft

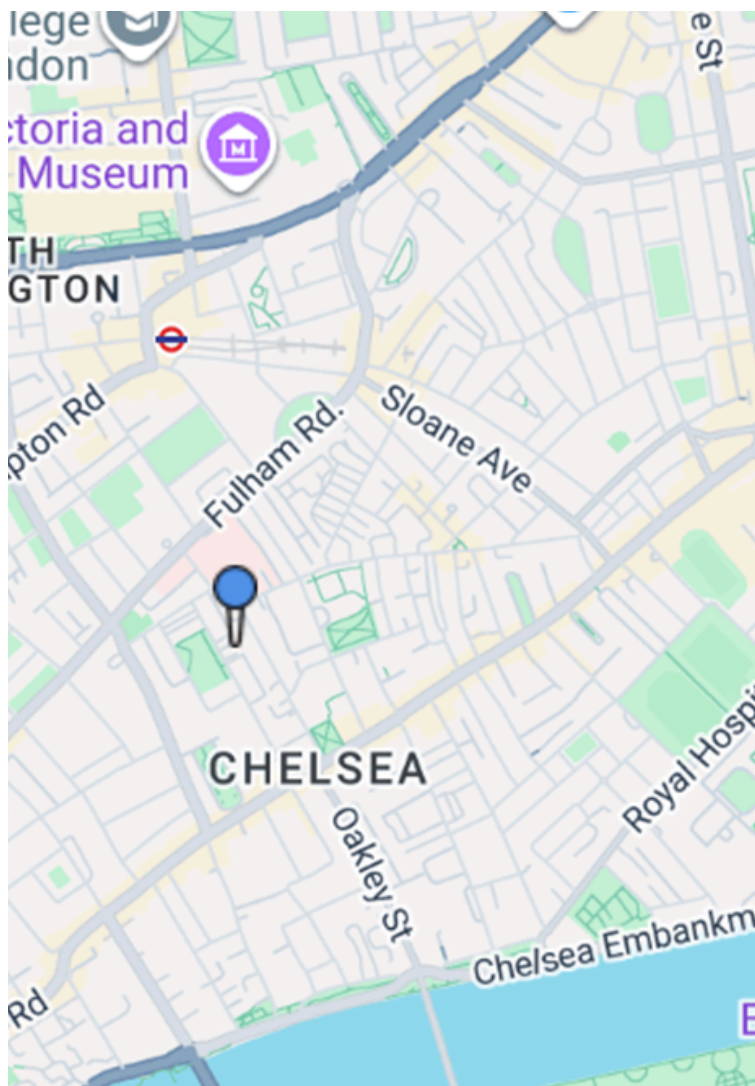
(Including restricted height
under 1.5m \square \square \square)

(CH = Ceiling Heights)



Property Location

CHESTERTONS



Score	Energy rating	Current	Potential
92+	A		
81-91	B		
69-80	C	73 C	81 B
55-68	D		
39-54	E		
21-38	F		
1-20	G		

Additional tenant charges apply (fees apply to non-AST tenancies only)

Tenancy Agreement Fee: £300

References per Tenant/Guarantor: £60

Inventory check (approx. £100 – £250 inc. VAT)

chestertons.co.uk/property-to-rent/applicable-fees

Chestertons Chelsea

17 Cale Street

London

SW3 3QR

chestertons.co.uk

Chesterton Global Ltd trading as Chestertons for themselves and for the vendor of this property whose agents they are, give notice that (i) these particulars do not constitute any part of an offer or contract, (ii) all statements contained within these particulars are made without responsibility on the part of Chestertons or the vendor, (iii) whilst made in good faith, none of the statements contained within these particulars are to be relied upon as a statement or representation of fact, (iv) any intending purchasers must satisfy themselves by inspection or otherwise as to the correctness of each of the statements contained within these particulars, (v) the vendor does not make or give either Chestertons or any person in their employment any authority to make or give representation or warranty whatsoever in relation to this property. Wide angle lenses may be used. ©Copyright Chestertons | Chesterton Global Ltd | Registered Office 40 Connaught Street, Hyde Park, London W2 2AB Registered Company Number 05334580.