



Hobury Street
Chelsea, SW10

CHESTERTONS





Situated on the third floor of a handsome period conversion, this delightful two-bedroom apartment offers bright, well-proportioned living space in the heart of Chelsea.

£3,250 pcm

Additional tenant charges apply (fees apply to non-AST tenancies only)

Tenancy Agreement Fee: £300

References per Tenant/Guarantor: £60

Inventory check (approx. £100 – £250 inc. VAT)

chestertons.co.uk/property-to-rent/applicable-fees

Score	Energy rating	Current	Potential
92+	A		
81-91	B		
69-80	C		
55-68	D	61 D	66 D
39-54	E		
21-38	F		
1-20	G		

Minimum Term: 12 months
Deposit Required: £3,750.00
Local Authority: Kensington and Chelsea
Council Tax Band: G
EPC Rating: D
Furnished

Chestertons Chelsea Lettings
 17 Cale Street
 London
 SW3 3QR
chelsealettings@chestertons.co.uk
 02075944750
chestertons.co.uk



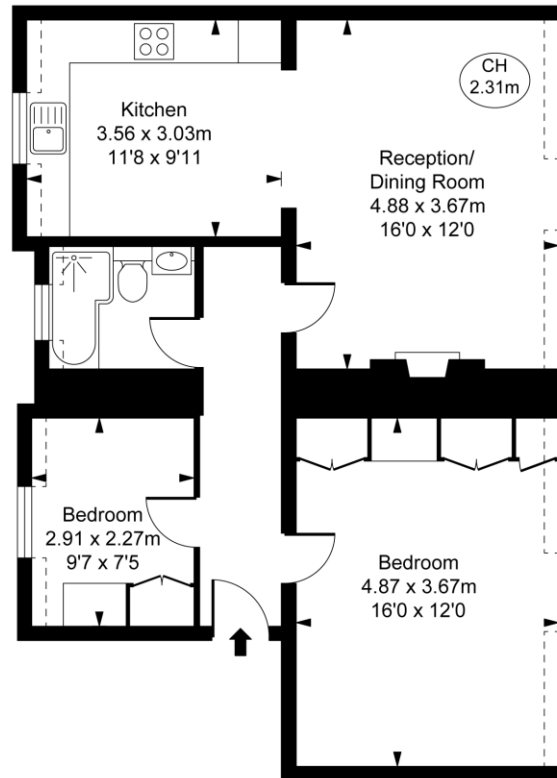
Hobury Street, SW10

Approximate Gross Internal Area

69.29 sq m / 746 sq ft

(Including restricted height
under 1.5m [-----])

(CH = Ceiling Heights)



Third Floor

This plan is not to scale. It is for guidance and not for valuation purposes.
All measurements and areas are approximate only, and have been prepared in accordance with the current edition of the RICS Code of Measuring Practice.
© Fulham Performance

Chesterton UK Services Limited trading as Chestertons for themselves and for the vendor of this property whose agents they are, give notice that (i) these particulars do not constitute any part of an offer or contract, (ii) all statements contained within these particulars are made without responsibility on the part of Chestertons or the vendor, (iii) whilst made in good faith, none of the statements contained within these particulars are to be relied upon as a statement or representation of fact, (iv) any intending purchasers must satisfy themselves by inspection or otherwise as to the correctness of each of the statements contained within these particulars, (v) the vendor does not make or give either Chestertons or any person in their employment any authority to make or give representation or warranty whatsoever in relation to this property. Wide angle lenses may be used. ©Copyright Chestertons | Chesterton Global Ltd | Registered Office 40 Connaught Street, Hyde Park, London W2 2AB Registered Company Number 05334580.



This paper is
100% recyclable