



Moore Street  
London, SW3

CHESTERTONS









A stunning townhouse of circa 1,965 sq ft, arranged over four floors, located in prime Chelsea. Features include a private garden, three double bedrooms and large bright double reception room.

- Garden
- Newly redecorated
- Separate dining area
- Great built in storage
- Prime location

**£11,000 pcm**

Additional tenant charges apply (fees apply to non-AST tenancies only)

Tenancy Agreement Fee: £300

References per Tenant/Guarantor: £60

Inventory check (approx. £100 – £250 inc. VAT)

[chestertons.co.uk/property-to-rent/applicable-fees](http://chestertons.co.uk/property-to-rent/applicable-fees)

Energy Efficiency Rating		Current	Potential
95-100	A		
81-94	B		
69-80	C		
55-68	D		
49-54	E		
41-48	F		
35-39	G		
Not energy efficient - higher running costs			
England, Scotland & Wales			
EU Directive 2002/91/EC			

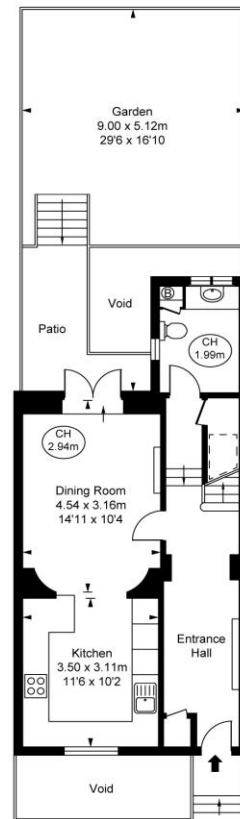
**Minimum Term:** 12 months  
**Deposit Required:** £15,230.77  
**Local Authority:** Kensington and Chelsea  
**Council Tax Band:** H  
**EPC Rating:** D  
**Unfurnished**

**Chestertons Chelsea Lettings**

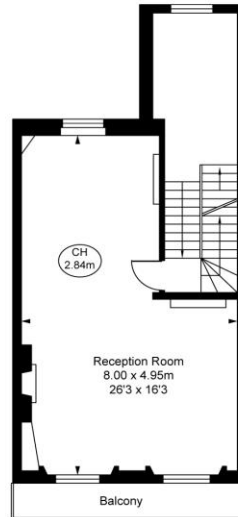
17 Cale Street  
 London  
 SW3 3QR

[chelsealettingsusers@chestertons.co.uk](mailto:chelsealettingsusers@chestertons.co.uk)  
 02075944750  
[chestertons.co.uk](http://chestertons.co.uk)

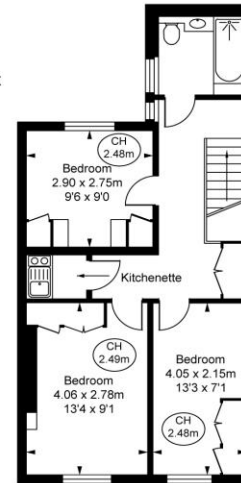
Moore Street, SW3  
 Approximate Gross Internal Area  
**182.75 sq m / 1,967 sq ft**  
 ( Including restricted height  
 under 1.5m ( — — — — — ) )  
 ( CH = Ceiling Heights )



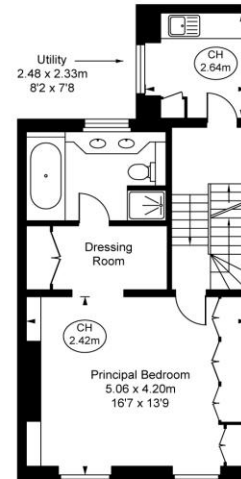
Ground Floor  
 Approximate Gross Internal Area  
 44.82 sq m / 482 sq ft



First Floor  
 Approximate Gross Internal Area  
 45.04 sq m / 485 sq ft



Third Floor  
 Approximate Gross Internal Area  
 46.49 sq m / 500 sq ft



Second Floor  
 Approximate Gross Internal Area  
 46.40 sq m / 499 sq ft

This plan is not to scale. It is for guidance and not for valuation purposes.  
 All measurements and areas are approximate only, and have been prepared in accordance with the current edition of the RICS Code of Measuring Practice.  
 © Future Performance

Chesterton UK Services Limited trading as Chestertons for themselves and for the vendor of this property whose agents they are, give notice that (i) these particulars do not constitute any part of an offer or contract, (ii) all statements contained within these particulars are made without responsibility on the part of Chestertons or the vendor, (iii) whilst made in good faith, none of the statements contained within these particulars are to be relied upon as a statement or representation of fact, (iv) any intending purchasers must satisfy themselves by inspection or otherwise as to the correctness of each of the statements contained within these particulars, (v) the vendor does not make or give either Chestertons or any person in their employment any authority to make or give representation or warranty whatsoever in relation to this property. Wide angle lenses may be used. ©Copyright Chestertons | Chesterton Global Ltd | Registered Office 40 Connaught Street, Hyde Park, London W2 2AB Registered Company Number 05334580.



This paper is  
 100% recyclable