



Christchurch Street
Chelsea, SW3

CHESTERTONS





An exceptional house arranged over three floors, located moments from the Kings Road. The accommodation is circa 1,263 sq. ft. and includes wood flooring and a private terrace.

- Private terrace and patio
- Newly refurbished
- Prime location
- Wooden floors
- Fireplace
- Fully furnished

£9,000 pcm

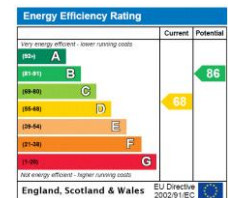
Additional tenant charges apply (fees apply to non-AST tenancies only)

Tenancy Agreement Fee: £300

References per Tenant/Guarantor: £60

Inventory check (approx. £100 – £250 inc. VAT)

chestertons.co.uk/property-to-rent/applicable-fees



Minimum Term: 12 months
Deposit Required: £12,461.54
Local Authority: Kensington and Chelsea
Council Tax Band: H
EPC Rating: D
Furnished

Chestertons Chelsea Lettings

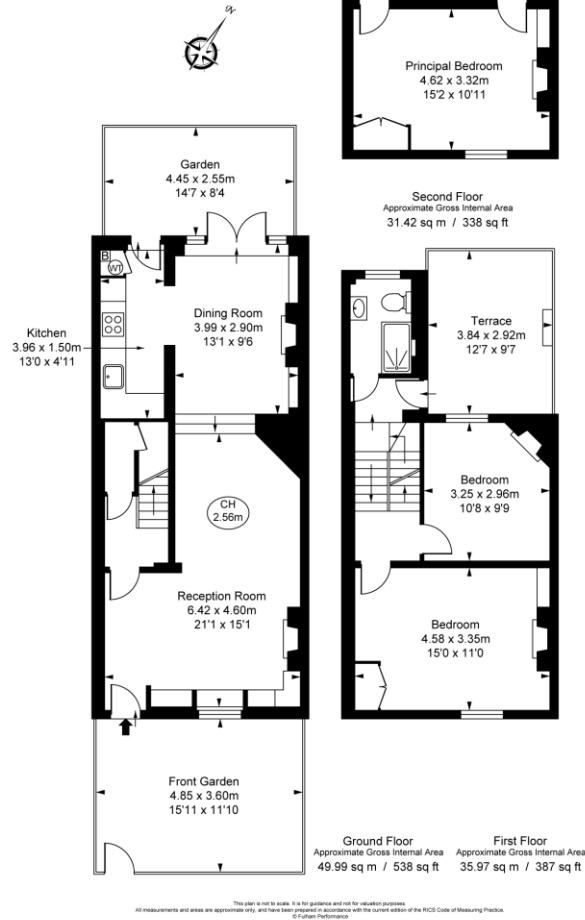
17 Cale Street
 London
 SW3 3QR

chelsealettings@chestertons.co.uk

02075944750

chestertons.co.uk

Christchurch Street, SW3
Approximate Gross Internal Area
117.38 sq m / 1,263 sq ft
(CH = Ceiling Heights)



Chesterton UK Services Limited trading as Chestertons for themselves and for the vendor of this property whose agents they are, give notice that (i) these particulars do not constitute any part of an offer or contract, (ii) all statements contained within these particulars are made without responsibility on the part of Chestertons or the vendor, (iii) whilst made in good faith, none of the statements contained within these particulars are to be relied upon as a statement or representation of fact, (iv) any intending purchasers must satisfy themselves by inspection or otherwise as to the correctness of each of the statements contained within these particulars, (v) the vendor does not make or give either Chestertons or any person in their employment any authority to make or give representation or warranty whatsoever in relation to this property. Wide angle lenses may be used. ©Copyright Chestertons | Chesterton Global Ltd | Registered Office 40 Connaught Street, Hyde Park, London W2 2AB Registered Company Number 05334580.



This paper is
100% recyclable