



Gunter Grove
Chelsea, SW10



A lovely, one double bedroom, maisonette with its own front door. Set over two floors, the accommodation is bright and airy and benefits from a recently upgraded kitchen & bathroom.

- Split level one bedroom
- Furnished

£1,825 pcm

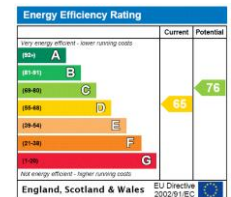
Additional tenant charges apply (fees apply to non-AST tenancies only)

Tenancy Agreement Fee: £300

References per Tenant/Guarantor: £60

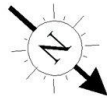
Inventory check (approx. £100 – £250 inc. VAT)

chestertons.co.uk/property-to-rent/applicable-fees



Minimum Term: 36 months
Deposit Required: £2,105.77
Local Authority: Royal Borough Of Kensington and Chelsea
Council Tax Band: E
EPC Rating: D
Part Furnished

Chestertons Chelsea Lettings
17 Cale Street
London
SW3 3QR
lettings.chelsea@chestertons.co.uk
02075944750
chestertons.co.uk

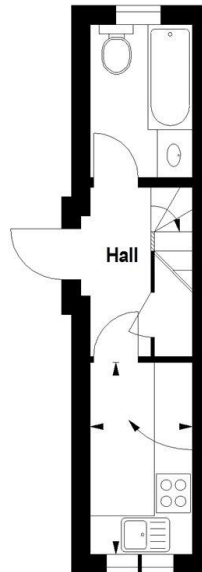


Gunter Grove, SW10

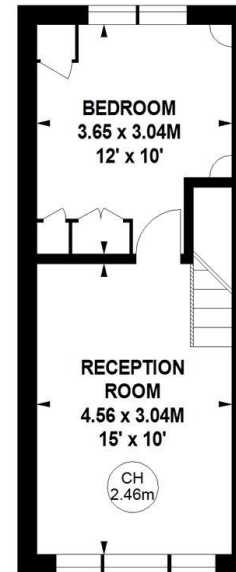
Approximate gross internal area

417 sq ft / 38.74 sq m

Key :
CH - Ceiling Height



Ground Floor



First Floor

The floor plan is not to scale and measurements and areas shown are approximate and therefore should be used for illustrative purposes only. The plan has been prepared in accordance with the RICS code of Measuring Practice and whilst we have confidence in the information produced, it must not be relied on. If there is any aspect of particular importance, you should carry out or commission your own inspection of the property.
Copyright of FeaturePRO.

