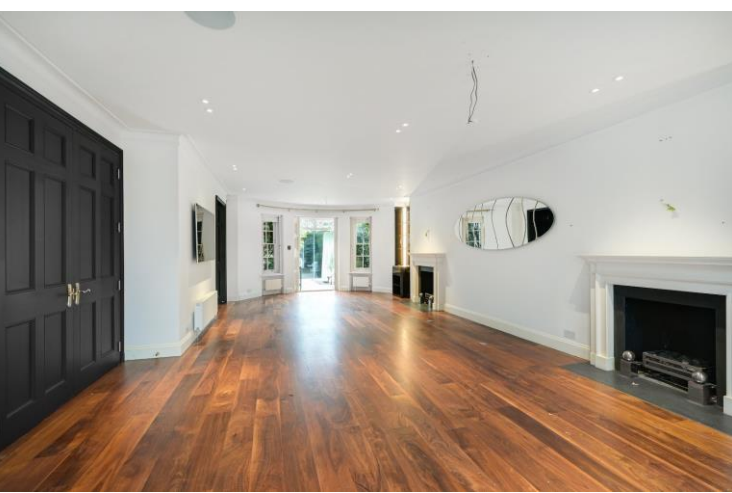




Chelsea Square  
London, SW3

CHESTERTONS









This four-bedroom house in Chelsea Square is the epitome of luxury living. With four bathrooms, there's plenty of privacy and convenience for the residents.

- 4 bedroom Georgian Townhouse
- 4 bathrooms
- Principle suite with dressing room
- Large private outside space

### £30,000 pcm

Additional tenant charges apply (fees apply to non-AST tenancies only)

Tenancy Agreement Fee: £300

References per Tenant/Guarantor: £60

Inventory check (approx. £100 – £250 inc. VAT)

[chestertons.co.uk/property-to-rent/applicable-fees](http://chestertons.co.uk/property-to-rent/applicable-fees)

Energy Efficiency Rating		
Most energy efficient - lower running costs	Current	Potential
A (94-100)		
B (81-93)		
C (69-80)	73	81
D (55-68)		
E (39-54)		
F (21-38)		
G (1-20)		
Not energy efficient - higher running costs		
England, Scotland & Wales		EU Directive 2002/91/EC

**Minimum Term:** 12 months  
**Deposit Required:** £41,538.46  
**Local Authority:** Kensington and Chelsea  
**Council Tax Band:** H  
**EPC Rating:** C  
**Unfurnished**

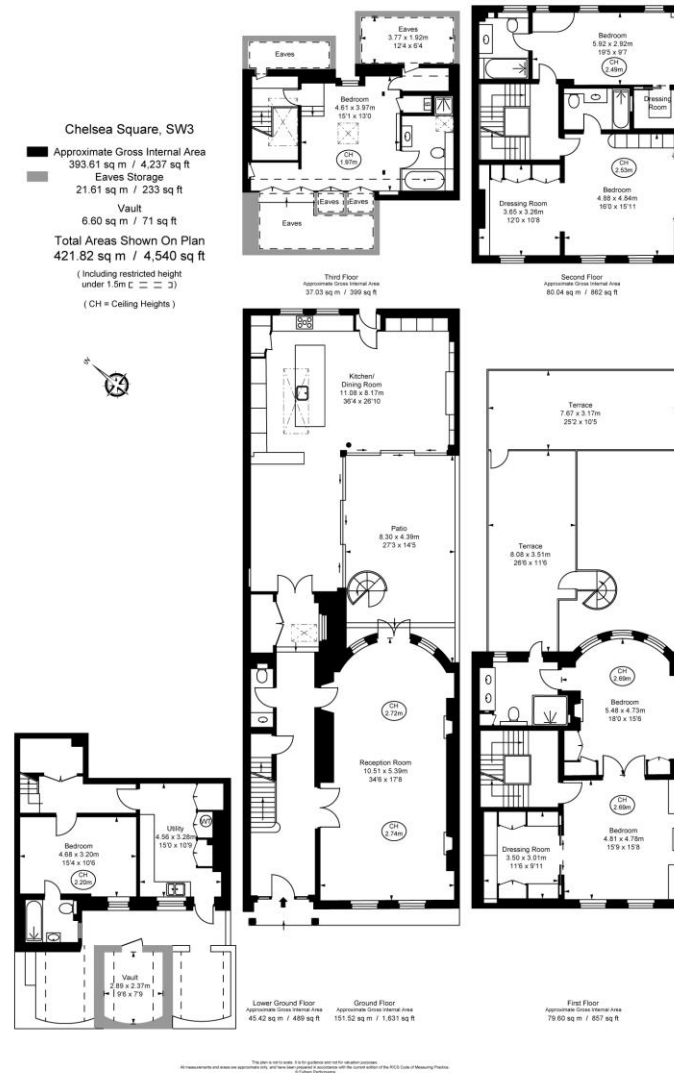
### Chestertons Chelsea Lettings

17 Cale Street  
London  
SW3 3QR

[chelsealettingsusers@chestertons.co.uk](mailto:chelsealettingsusers@chestertons.co.uk)

02075944750

[chestertons.co.uk](http://chestertons.co.uk)



Chesterton UK Services Limited trading as Chestertons for themselves and for the vendor of this property whose agents they are, give notice that (i) these particulars do not constitute any part of an offer or contract, (ii) all statements contained within these particulars are made without responsibility on the part of Chestertons or the vendor, (iii) whilst made in good faith, none of the statements contained within these particulars are to be relied upon as a statement or representation of fact, (iv) any intending purchasers must satisfy themselves by inspection or otherwise as to the correctness of each of the statements contained within these particulars, (v) the vendor does not make or give either Chestertons or any person in their employment any authority to make or give representation or warranty whatsoever in relation to this property. Wide angle lenses may be used. ©Copyright Chestertons | Chesterton Global Ltd | Registered Office 40 Connaught Street, Hyde Park, London W2 2AB Registered Company Number 05334580.

