



Sloane Gardens
London, SW1W

CHESTERTONS





A well-presented one bedroom apartment benefiting from wooden floors, high ceilings a semi-open plan kitchen with a balcony, good storage through-out and a good size bedroom with ample natural light.

- Caretaker
- High ceilings
- Balcony
- Modern Kitchen
- Wooden floors

£4,446 pcm

Additional tenant charges apply (fees apply to non-AST tenancies only)

Tenancy Agreement Fee: £300

References per Tenant/Guarantor: £60

Inventory check (approx. £100 – £250 inc. VAT)

chestertons.co.uk/property-to-rent/applicable-fees

Energy Efficiency Rating		Current	Potential
90-100	A		
81-89	B		
72-80	C	75	82
63-71	D		
54-62	E		
45-53	F		
35-44	G		

Not energy efficient - higher running costs

England, Scotland & Wales EU Directive 2002/91/EC

Minimum Term: 12 months
Deposit Required: £6,156.00
Local Authority: Royal Borough of Kensington & Chelsea
Council Tax Band: G
EPC Rating: C
Furnished

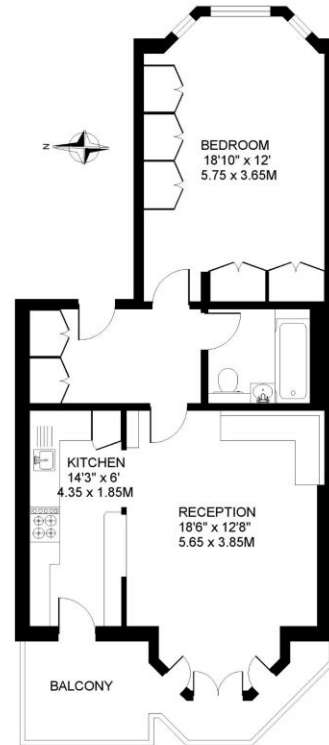
Chestertons Premier Property Management

26 Clifton Road
 London
 W9 1SX

premier.dept@chestertons.co.uk
 02072985908
chestertons.co.uk

SLOANE GARDENS, CHELSEA, LONDON SW1

APPROXIMATE INTERNAL (LIVING) FLOOR AREA
662 SQ.FT. / 61.5 SQ.M.



FIRST FLOOR

COPYRIGHT: Floorplan produced for "Henry & James" by floorplanners.co.uk
This plan is not to a given scale, and is for guidance only, and must not be relied upon as a statement of fact.
All measurements are maximum, and include window bays, and wardrobes where applicable.
This plan has been prepared in accordance with the "RICS" Code of Measuring Practice.
Where a room has a sloping ceiling, the dotted line indicates height at 1.5m, and measurements are shown at floor level.

Chesterton Global Ltd trading as Chestertons for themselves and for the vendor of this property whose agents they are, give notice that (i) these particulars do not constitute any part of an offer or contract, (ii) all statements contained within these particulars are made without responsibility on the part of Chestertons or the vendor, (iii) whilst made in good faith, none of the statements contained within these particulars are to be relied upon as a statement or representation of fact, (iv) any intending purchasers must satisfy themselves by inspection or otherwise as to the correctness of each of the statements contained within these particulars, (v) the vendor does not make or give either Chestertons or any person in their employment any authority to make or give representation or warranty whatsoever in relation to this property. Wide angle lenses may be used. ©Copyright Chestertons | Chesterton Global Ltd | Registered Office 40 Connaught Street, Hyde Park, London W2 2AB Registered Company Number 05334580.



This paper is
100% recyclable