



Halsey Street

London, SW3

£9,750 per month
(£2,250 per week)

SHORT LET A stunning townhouse of circa 1,765 sq. ft, arranged over three floors, located in prime Chelsea. Features include a private garden, three large bedrooms and large bright double reception room.

CHESTERTONS



Halsey Street

London, SW3

- SHORT LET
- Garden
- Prime location
- Ample storage
- High ceilings
- Fully furnished

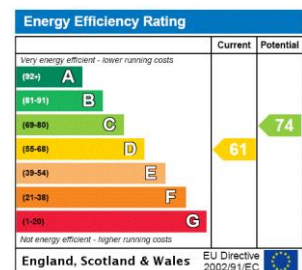


SHORT LET A stunning townhouse of circa 1,920 sq. ft, arranged over three floors, located in prime Chelsea. Features include a private garden, three large bedrooms and large bright double reception room.

Decorated in neutral tones throughout, the property includes a spacious reception, large kitchen/dining room that leads onto a private garden and four bedrooms. The house also has a guest WC, utility room and is in a prime location.

Halsey Street is moments from Chelsea Green and Sloane Square, with Kings Road also just a short walk.

Minimum Term: 1 month
Deposit Required: £4,500.00
Local Authority: Royal Borough of Kensington & Chelsea
Council Tax Band: H
EPC Rating: D
Furnished



Chestertons Chelsea Lettings

17 Cale Street
 London
 SW3 3QR
 chelsea@chestertons.co.uk
 02075944750
 chestertons.co.uk

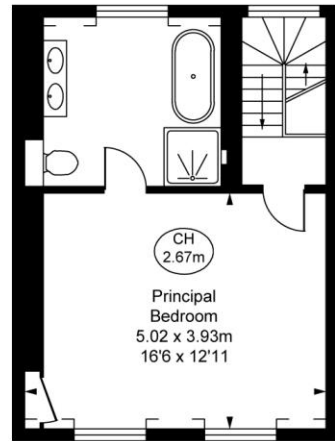
Additional tenant charges apply (fees apply to non-AST tenancies only)
 Tenancy Agreement Fee: £300
 References per Tenant/Guarantor: £60
 Inventory check (approx. £100 – £250 inc. VAT)
chestertons.co.uk/property-to-rent/applicable-fees

Halsey Street, SW3
 Approximate Gross Internal Area
163.97 sq m / 1,765 sq ft

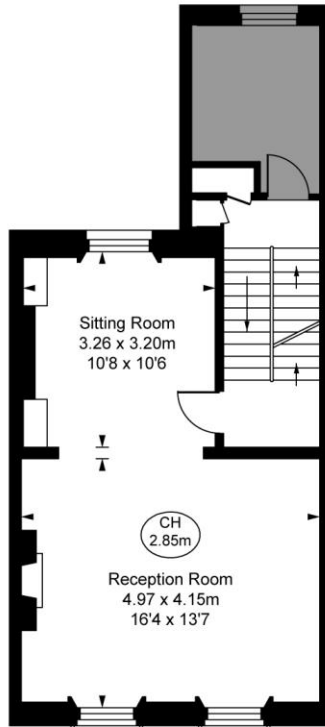
(Including restricted height
 under 1.5m □ □ □)
 (CH = Ceiling Heights)



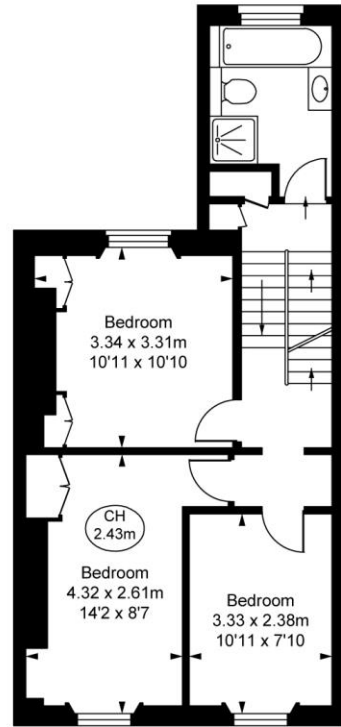
Ground Floor
 Approximate Gross Internal Area
44.71 sq m / 481 sq ft



Third Floor
 Approximate Gross Internal Area
33.81 sq m / 364 sq ft



First Floor
 Approximate Gross Internal Area
39.36 sq m / 424 sq ft



Second Floor
 Approximate Gross Internal Area
46.09 sq m / 496 sq ft

This plan is not to scale. It is for guidance and not for valuation purposes.
 All measurements and areas are approximate only, and have been prepared in accordance with the current edition of the RICS Code of Measuring Practice.
 © Fulham Performance

