



Cadogan Gardens  
Chelsea, SW3

CHESTERTONS





A spacious two bedroom two bathroom apartment benefiting from a large and bright living space and ample storage space as well as an off-street parking space. Circa 1,295sqft.

**£1,495 per week (£6,478.33 pcm)**

Additional tenant charges apply (fees apply to non-AST tenancies only)

Tenancy Agreement Fee: £300

References per Tenant/Guarantor: £60

Inventory check (approx. £100 – £250 inc. VAT)

[chestertons.co.uk/property-to-rent/applicable-fees](http://chestertons.co.uk/property-to-rent/applicable-fees)

Energy Efficiency Rating		
	Current	Potential
90-100 A		
81-90 B		
71-80 C	78	78
61-70 D		
51-60 E		
41-50 F		
31-40 G		
1-30		
<small>           Not energy efficient - higher running costs            EU Directive 2002/91/EC            England, Scotland &amp; Wales         </small>		

**Minimum Term:** 12 months  
**Deposit Required:** 5 weeks  
**Local Authority:** Royal Borough of Kensington & Chelsea  
**Council Tax Band:** H  
**EPC Rating:** C  
**Unfurnished**

**Chestertons Chelsea Lettings**

17 Cale Street

London

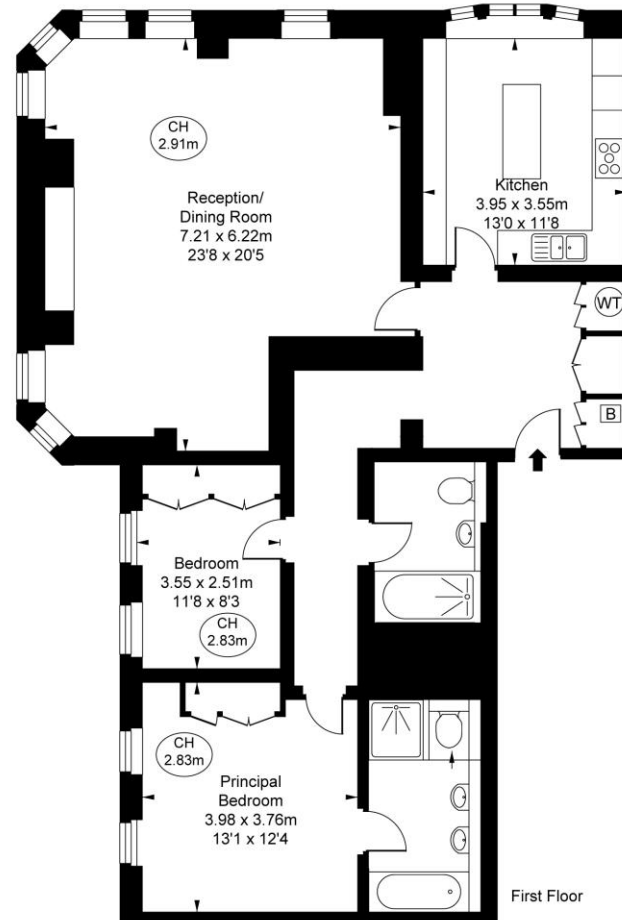
SW3 3QR

[chelsea@chestertons.co.uk](mailto:chelsea@chestertons.co.uk)

02075944750

[chestertons.co.uk](http://chestertons.co.uk)

Cadogan Gardens, SW3  
Approximate Gross Internal Area  
120.08 sq m / 1,293 sq ft



This plan is not to scale. It is for guidance and not for valuation purposes.  
All measurements and areas are approximate only, and have been prepared in accordance with the current edition of the RICS Code of Measuring Practice.  
© Fulham Performance

Chesterton Global Ltd trading as Chestertons for themselves and for the vendor of this property whose agents they are, give notice that (i) these particulars do not constitute any part of an offer or contract, (ii) all statements contained within these particulars are made without responsibility on the part of Chestertons or the vendor, (iii) whilst made in good faith, none of the statements contained within these particulars are to be relied upon as a statement or representation of fact, (iv) any intending purchasers must satisfy themselves by inspection or otherwise as to the correctness of each of the statements contained within these particulars, (v) the vendor does not make or give either Chestertons or any person in their employment any authority to make or give representation or warranty whatsoever in relation to this property. Wide angle lenses may be used. ©Copyright Chestertons | Chesterton Global Ltd | Registered Office 40 Connaught Street, Hyde Park, London W2 2AB Registered Company Number 05334580.



This paper is  
100% recyclable