



Finborough Road
Chelsea, SW10

CHESTERTONS





The raised ground floor consists of 2 bedrooms and 1 bathroom. The lower ground floor consist of the 3rd bedroom and another bathroom as well as large reception room and dining room leading out to the front garden, separate kitchen.

- 3 beds and 2 baths
- Ground and lower ground floor duplex
- Over 1,000 square feet
- Front and rear garden

£1,100 per week (£4,766.67 pcm)

Additional tenant charges apply (fees apply to non-AST tenancies only)

Tenancy Agreement Fee: £300

References per Tenant/Guarantor: £60

Inventory check (approx. £100 – £250 inc. VAT)

chestertons.co.uk/property-to-rent/applicable-fees

Energy Efficiency Rating		Current	Potential
100-109	A		
81-100	B		
62-81	C	74	76
43-62	D		
25-43	E		
10-25	F		
1-10	G		

Not energy efficient - higher running costs

England, Scotland & Wales EU Directive 2002/91/EC

Minimum Term: 12 months
Deposit Required: £5,500.00
Local Authority: Royal Borough Of Kensington & Chelsea
Council Tax Band: D
EPC Rating: C
Furnished

Chestertons Chelsea Lettings

17 Cale Street

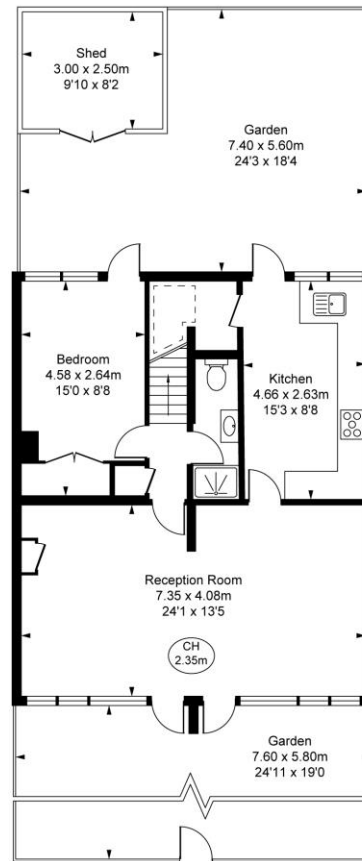
London

SW3 3QR

chelsea@chestertons.co.uk

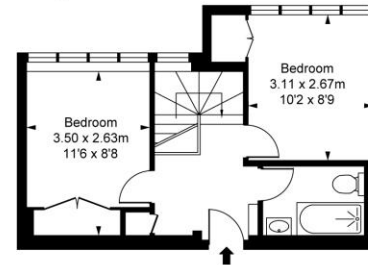
02075944750

chestertons.co.uk



Lower Ground Floor
Approximate Gross Internal Area
65.12 sq m / 701 sq ft

Finborough Road, SW10
Approximate Gross Internal Area
95.31 sq m / 1,026 sq ft
(Including restricted height
under 1.5m [-----])
(CH = Ceiling Heights)



Raised Ground Floor
Approximate Gross Internal Area
30.19 sq m / 325 sq ft

This plan is not to scale. It is for guidance and not for valuation purposes.
All measurements and areas are approximate only, and have been prepared in accordance with the current edition of the RICS Code of Measuring Practice.
© Fulham Performance

Chesterton Global Ltd trading as Chestertons for themselves and for the vendor of this property whose agents they are, give notice that (i) these particulars do not constitute any part of an offer or contract, (ii) all statements contained within these particulars are made without responsibility on the part of Chestertons or the vendor, (iii) whilst made in good faith, none of the statements contained within these particulars are to be relied upon as a statement or representation of fact, (iv) any intending purchasers must satisfy themselves by inspection or otherwise as to the correctness of each of the statements contained within these particulars, (v) the vendor does not make or give either Chestertons or any person in their employment any authority to make or give representation or warranty whatsoever in relation to this property. Wide angle lenses may be used. ©Copyright Chestertons | Chesterton Global Ltd | Registered Office 40 Connaught Street, Hyde Park, London W2 2AB Registered Company Number 05334580.



This paper is
100% recyclable