



Gunter Grove

Chelsea, SW10

£2,500 per month
(£576.92 per week)

A bright apartment with an open plan reception space, well-appointed kitchen and a modern bathroom in an excellent location for access to nearby public transport links.

CHESTERTONS



Gunter Grove

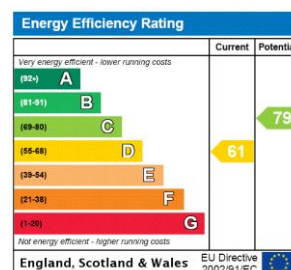
Chelsea, SW10

- Two bedrooms
- Wooden flooring
- Open plan reception
- Conveniently located for all local amenities



A bright apartment with an open plan reception space, well-appointed kitchen and a modern bathroom in an excellent location for access to nearby public transport links.

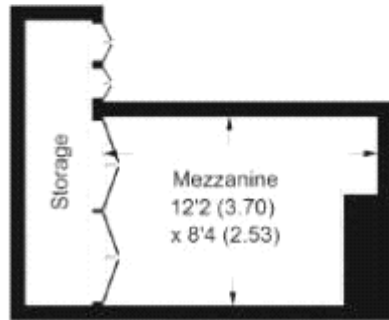
Minimum Term: 36 months
Deposit Required: 5 weeks
Local Authority: Royal Borough Of Kensington & Chelsea
Council Tax Band: D
EPC Rating: D
Furnished, Part Furnished



Chestertons Chelsea Lettings

17 Cale Street
 London
 SW3 3QR
chelsea@chestertons.co.uk
 02075944750
chestertons.co.uk

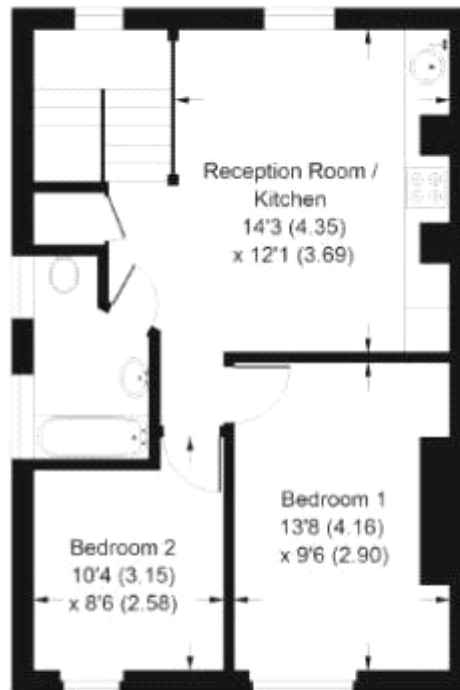
Additional tenant charges apply (fees apply to non-AST tenancies only)
 Tenancy Agreement Fee: £300
 References per Tenant/Guarantor: £60
 Inventory check (approx. £100 – £250 inc. VAT)
chestertons.co.uk/property-to-rent/applicable-fees



MEZZANINE



FIRST FLOOR



SECOND FLOOR

 = Reduced headroom below 1.5 m / 5'0

APPROX. GROSS INTERNAL FLOOR AREA
538 SQFT / 50 SQM
MEZZANINE LEVEL = 140 SQFT / 13 SQM APPROX
(INCLUDING STORAGE)
TOTAL = 678 SQFT / 63 SQM

