



Edith Grove  
Chelsea, SW10

CHESTERTONS







A well presented Period conversion apartment on the lower ground floor with private entrance and patio leading out to a shared gardens.

The property has been tasteful decorated and boast 3 double bedrooms, 2 bathrooms, open plan kitchen reception with additional dining area.

Edith Grove is conveniently located with close proximity of both Fulham Road and Kings Road.

- 3 bedrooms & 2 bathrooms
- Furnished
- Nearly 900 sqft
- Private patio & shared garden

**£865 per week (£3,748.33 pcm)**

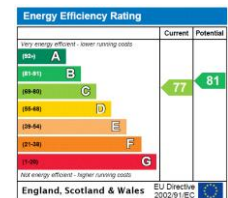
Additional tenant charges apply (fees apply to non-AST tenancies only)

Tenancy Agreement Fee: £300

References per Tenant/Guarantor: £60

Inventory check (approx. £100 – £250 inc. VAT)

[chestertons.co.uk/property-to-rent/applicable-fees](http://chestertons.co.uk/property-to-rent/applicable-fees)



**Minimum Term:** 12 months  
**Deposit Required:** £4,325.00  
**Local Authority:** Royal Borough of Kensington & Chelsea  
**Council Tax Band:** E  
**EPC Rating:** C  
**Furnished**

**Chestertons Chelsea Lettings**

17 Cale Street

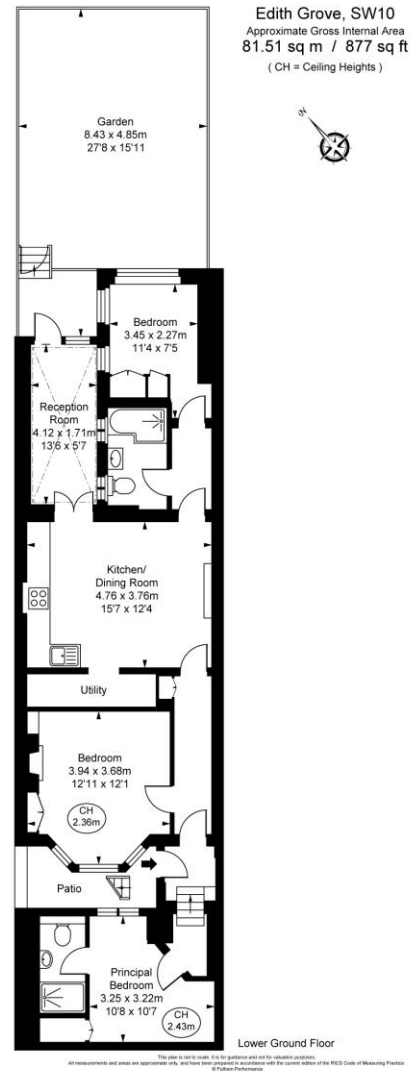
London

SW3 3QR

[chelsea@chestertons.co.uk](mailto:chelsea@chestertons.co.uk)

02075944750

[chestertons.co.uk](http://chestertons.co.uk)



Chesterton Global Ltd trading as Chestertons for themselves and for the vendor of this property whose agents they are, give notice that (i) these particulars do not constitute any part of an offer or contract, (ii) all statements contained within these particulars are made without responsibility on the part of Chestertons or the vendor, (iii) whilst made in good faith, none of the statements contained within these particulars are to be relied upon as a statement or representation of fact, (iv) any intending purchasers must satisfy themselves by inspection or otherwise as to the correctness of each of the statements contained within these particulars, (v) the vendor does not make or give either Chestertons or any person in their employment any authority to make or give representation or warranty whatsoever in relation to this property. Wide angle lenses may be used. ©Copyright Chestertons | Chesterton Global Ltd | Registered Office 40 Connaught Street, Hyde Park, London W2 2AB Registered Company Number 05334580.