



# Frederick Court

30 Duke of York Square, SW3

£3,141.67 per month  
(£725.00 per week)

A fantastically located one bedroom apartment, forming part of a secure development on the Kings Road. Large open plan reception space, additional guest bedroom/study, modern bathroom and plenty of storage. Located near Sloane Square Underground.



# Frederick Court

## 30 Duke of York Square, SW3

- Professionally managed
- Open plan kitchen
- Communal garden access ( separate negotiation)
- Built in storage
- Extra study room



A fantastically located one bedroom apartment, forming part of a secure development on the Kings Road. Large open plan reception space, additional guest bedroom/study, modern bathroom and plenty of storage. Located near Sloane Square Underground.

**Minimum Term:** 12 months  
**Deposit Required:** £3,625.00  
**Local Authority:** Royal Borough of Kensington & Chelsea  
**Council Tax Band:** E  
**EPC Rating:** C  
**Unfurnished**

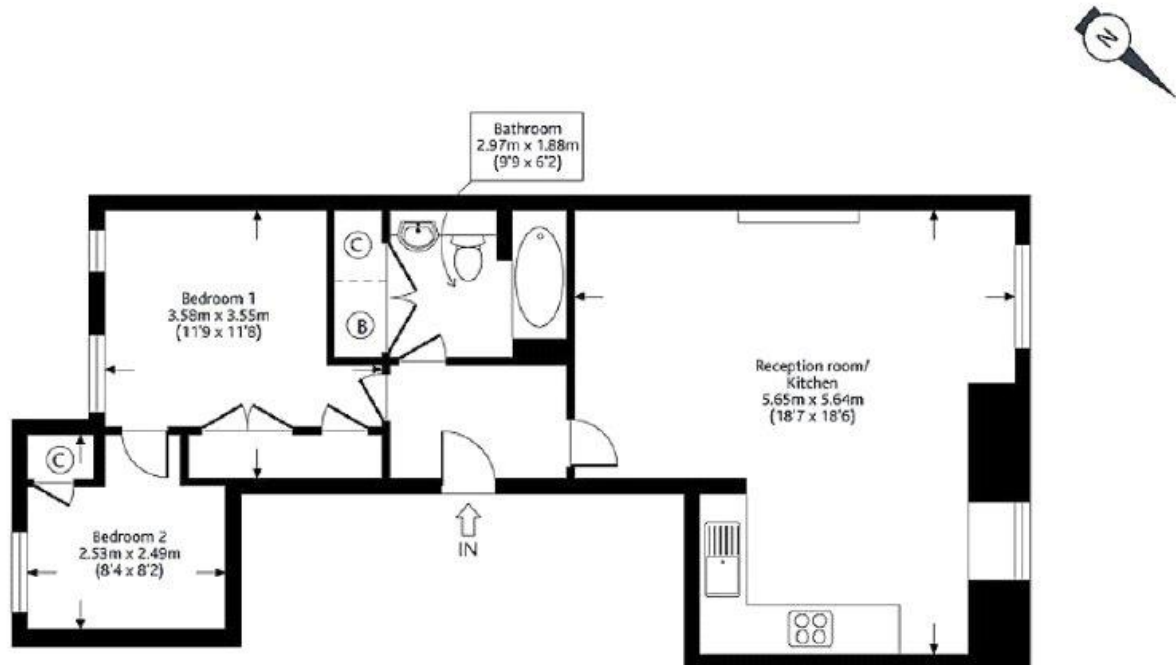
Energy Efficiency Rating		
	Current	Potential
Very energy efficient - lower running costs		
<b>A</b> (92-100)		
<b>B</b> (81-91)		
<b>C</b> (69-80)	79	79
<b>D</b> (55-68)		
<b>E</b> (39-54)		
<b>F</b> (21-38)		
<b>G</b> (1-20)		
Not energy efficient - higher running costs		
England, Scotland & Wales		EU Directive 2002/91/EC

### *Chestertons Chelsea Lettings*

17 Cale Street  
 London  
 SW3 3QR  
[chelsea@chestertons.co.uk](mailto:chelsea@chestertons.co.uk)  
 02075944750  
[chestertons.co.uk](http://chestertons.co.uk)

Additional tenant charges apply (fees apply to non-AST tenancies only)  
 Tenancy Agreement Fee: £300  
 References per Tenant/Guarantor: £60  
 Inventory check (approx. £100 – £250 inc. VAT)  
[chestertons.co.uk/property-to-rent/applicable-fees](http://chestertons.co.uk/property-to-rent/applicable-fees)

Frederick Court, SW3  
Approximate gross internal area 54.3 sq m /(585 sq ft)



Third floor

