

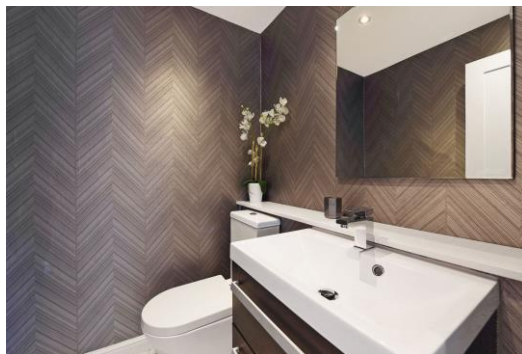


Sloane Gardens

London, SW1W

£4,550 per month
(£1,050 per week)

Stunning and bright 3rd floor apartment with lift access and caretaker. The apartment has been recently renovated to a high standard and offers beautiful wood flooring, spacious living space and two double bedrooms.



Sloane Gardens

London, SW1W

- Caretaker
- Lift
- Professionally managed
- Fully furnished
- High ceilings
- Bright



A stunning and bright 3rd floor apartment with lift access and caretaker.

The apartment has been recently renovated to a high standard and offers wood flooring, a spacious living space, separate modern kitchen and two double bedrooms and two bathrooms.

Sloane Gardens is conveniently located for access to Sloane Square, Kings Road, Knightsbridge and Pimlico, Hyde Park and Battersea Park are easily reachable on foot.

Minimum Term: 12 months
Deposit Required: £6,300.00
Local Authority: Royal Borough of Kensington & Chelsea
Council Tax Band: G
EPC Rating: C
Furnished

Energy Efficiency Rating		
	Current	Potential
Very energy efficient - lower running costs		
A (92-100)		
B (81-91)		
C (69-80)	76	83
D (55-68)		
E (39-54)		
F (21-38)		
G (1-20)		
Not energy efficient - higher running costs		
England, Scotland & Wales		EU Directive 2002/91/EC

Chestertons Chelsea Lettings

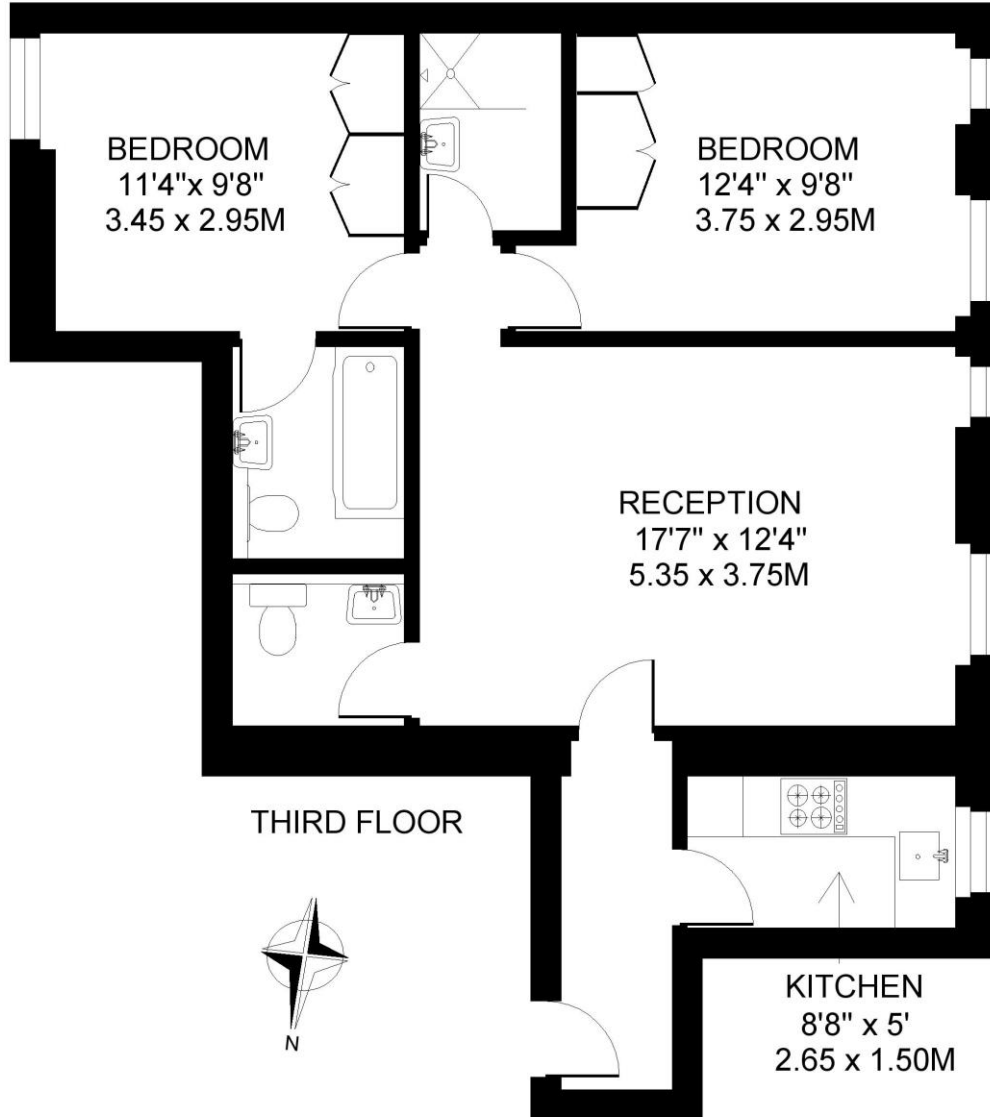
17 Cale Street
 London
 SW3 3QR
 chelsea@chestertons.co.uk
 02075944750
 chestertons.co.uk

Additional tenant charges apply (fees apply to non-AST tenancies only)
 Tenancy Agreement Fee: £300
 References per Tenant/Guarantor: £60
 Inventory check (approx. £100 – £250 inc. VAT)
chestertons.co.uk/property-to-rent/applicable-fees

SLOANE GARDENS, CHELSEA, LONDON SW3

APPROXIMATE INTERNAL (LIVING) FLOOR AREA

694 SQ.FT. / 64.4 SQ.M.



COPYRIGHT: Floorplan produced for "Henry & James Estate Agents Ltd." by floorplanners.co.uk

This plan is not to a given scale, and is for guidance only, and must not be relied upon as a statement of fact.

All measurements are maximum, and include window bays, and wardrobes where applicable.

This plan has been prepared in accordance with the "RICS" Code of Measuring Practice.

Where a room has a sloping ceiling, the dotted line indicates height at 1.5m. and measurements are shown at floor level.

