

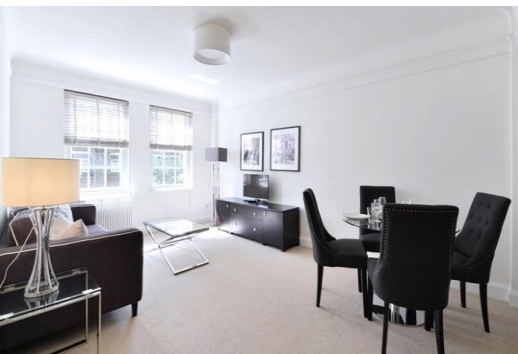


# Pelham Court

145 Fulham Road, SW3

£895 per week  
(£3,878.33 pcm)

Situated in the heart of Chelsea and within a short distance to South Kensington Station (0.3 miles) and Sloane Square (0.7 miles), Pelham Court provides its occupants with easy access to key destinations of the Royal borough.



# Pelham Court

## 145 Fulham Road, SW3

- Period, portered building, private communal gardens
- Available furnished or unfurnished
- Central Chelsea location
- Walking distance to both South Kensington and Sloane Square underground stations



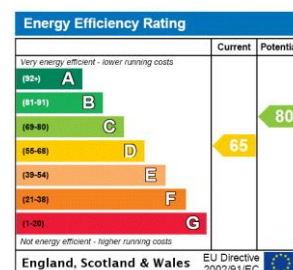
The flat comprises of two double bedrooms, and a good sized reception/dining room with views over the communal gardens to the rear. The flat also benefits from two bathrooms, one shower room and another well proportioned bathroom, to include a shower over bath.

The property is available to rent furnished or unfurnished.

This beautiful Edwardian style mansion block offers light, spacious and modern living accommodation while maintaining many of the classical period features of the building. The apartments are set over 5 floors and are accessed via a lift. The flats can be rented on flexible

**Tenure:** To be advised  
**Furnished, Part Furnished,**

Additional tenant charges apply (fees apply to non-AST tenancies only)  
 Tenancy Agreement Fee: £300  
 References per Tenant/Guarantor: £60  
 Inventory check (approx. £100 – £250 inc. VAT)  
[chestertons.com/property-to-rent/applicable-fees](https://www.chestertons.com/property-to-rent/applicable-fees)



### *Chestertons Chelsea Lettings*

17 Cale Street  
 London  
 SW3 3QR  
[lettings.chelsea@chestertons.com](mailto:lettings.chelsea@chestertons.com)  
 02075944750  
[chestertons.com](https://www.chestertons.com)

## 27 PELHAM COURT, SW3

APPROX. GROSS INTERNAL AREA \*  
820 Ft<sup>2</sup> - 76.18 M<sup>2</sup>

ILLUSTRATION FOR IDENTIFICATION PURPOSES ONLY. NOT TO SCALE  
\* As Defined by RICS - Code of Measuring Practice



FIRST FLOOR

