



# Ifield Road

Chelsea, SW10

£4,766.67 per month  
(£1,100 per week)

This apartment is approx. 1,100 square feet and boasts 3 double bedrooms, 2 bathrooms (1 en-suite), open plan kitchen reception with integrated appliances.



# Ifield Road

## Chelsea, SW10

- 3 bedrooms & 2 bathrooms
- Approx. 1,100 square feet
- 1st & 2nd floor duplex
- Close to amenities





A beautiful duplex apartment arranged over the first and second floor of this beautiful Period building.

This apartment is approx. 1,100 square feet and boasts 3 double bedrooms, 2 bathrooms (1 en-suite), open plan kitchen reception with integrated appliances.

Ifield Road is located just off Fulham Road and easily accessible to all amenities.

**Minimum Term:** 6 months  
**Deposit Required:** £6,600.00  
**Local Authority:** Royal Borough of Kensington & Chelsea  
**Council Tax Band:** F  
**EPC Rating:** C  
**Furnished, Part Furnished**

Energy Efficiency Rating		
	Current	Potential
Very energy efficient - lower running costs		
(94-100) <b>A</b>		
(81-93) <b>B</b>		
(69-80) <b>C</b>	71	78
(55-68) <b>D</b>		
(39-54) <b>E</b>		
(21-38) <b>F</b>		
(1-20) <b>G</b>		
Not energy efficient - higher running costs		
England, Scotland & Wales EU Directive 2002/91/EC		

### *Chestertons Chelsea Lettings*

17 Cale Street  
 London  
 SW3 3QR  
[chelsea@chestertons.co.uk](mailto:chelsea@chestertons.co.uk)  
 02075944750  
[chestertons.co.uk](http://chestertons.co.uk)

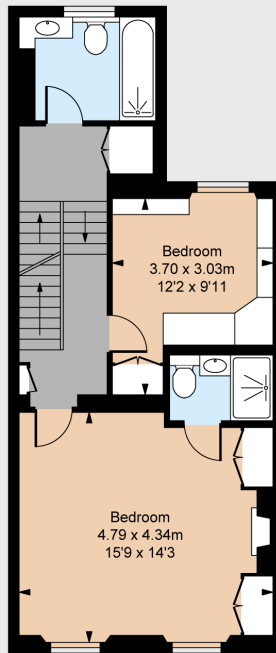
Additional tenant charges apply (fees apply to non-AST tenancies only)  
 Tenancy Agreement Fee: £300  
 References per Tenant/Guarantor: £60  
 Inventory check (approx. £100 – £250 inc. VAT)  
[chestertons.co.uk/property-to-rent/applicable-fees](http://chestertons.co.uk/property-to-rent/applicable-fees)

IFIELD ROAD, SW10  
 Gross internal area 1,094 sq ft (101.67 sq m)  
 including restricted height under 1.5m (---)  
 CH = Ceiling Heights  
 For identification purposes only.

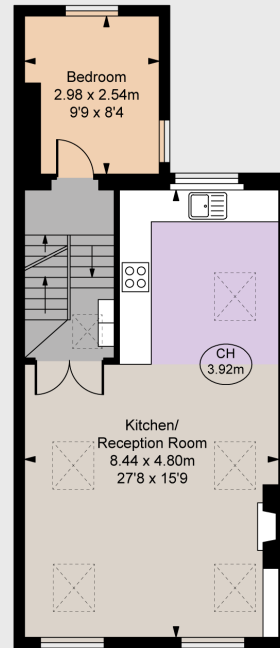
For illustrative purposes only – not to scale  
 The position and size of doors, windows, appliances  
 and other features are approximate only.



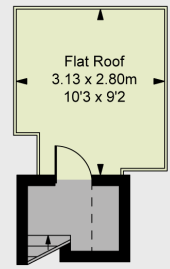
Ground Floor Entrance  
 Approximate Gross Internal Area  
 1.94 sq m / 21 sq ft



First Floor  
 Approximate Gross Internal Area  
 48.71 sq m / 524 sq ft



Second Floor  
 Approximate Gross Internal Area  
 48.84 sq m / 526 sq ft



Third Floor  
 Approximate Gross Internal Area  
 2.18 sq m / 23 sq ft

