



# Ifield Road

Chelsea, SW10

£6,500 per month  
(£1,500 per week)

SHORT LET: A superb three bedroom duplex apartment arranged over the 1st and 2nd floor of a period building benefiting from circa 1,100sq.ft. modern fit and finishes and a separate space which can accommodate a study/office space.

CHESTERTONS



# Ifield Road

## Chelsea, SW10

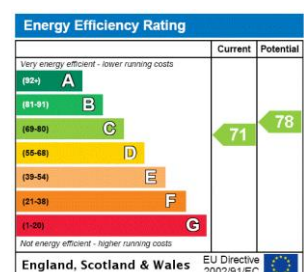
- Three bedrooms & two bathrooms
- Large & bright living room
- Modern fit and finishes throughout
- Circa 1,100sqft.





SHORT LET: A superb three bedroom duplex apartment arranged over the first and second floor of a period building benefiting from circa 1,100sq.ft. modern fit and finishes and a separate space which can easily accommodate study/office space.

**Minimum Term:** 1 month  
**Deposit Required:** £6,000.00  
**Local Authority:** Royal Borough of Kensington & Chelsea  
**Council Tax Band:** F  
**EPC Rating:** C  
**Furnished, Part Furnished**



### Chestertons Chelsea Lettings

17 Cale Street  
 London  
 SW3 3QR  
[chelsea@chestertons.co.uk](mailto:chelsea@chestertons.co.uk)  
 02075944750  
[chestertons.co.uk](http://chestertons.co.uk)

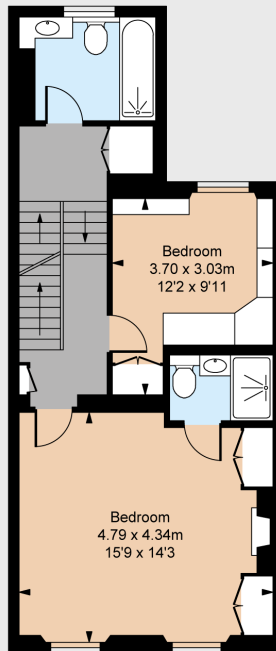
Additional tenant charges apply (fees apply to non-AST tenancies only)  
 Tenancy Agreement Fee: £300  
 References per Tenant/Guarantor: £60  
 Inventory check (approx. £100 – £250 inc. VAT)  
[chestertons.co.uk/property-to-rent/applicable-fees](http://chestertons.co.uk/property-to-rent/applicable-fees)

IFIELD ROAD, SW10  
 Gross internal area 1,094 sq ft (101.67 sq m)  
 including restricted height under 1.5m (---)  
 CH = Ceiling Heights  
 For identification purposes only.

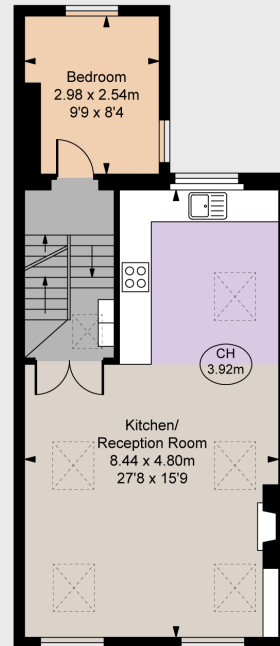
For illustrative purposes only – not to scale  
 The position and size of doors, windows, appliances  
 and other features are approximate only.



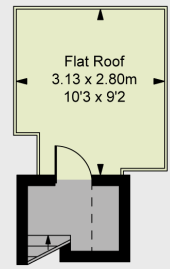
Ground Floor Entrance  
 Approximate Gross Internal Area  
 1.94 sq m / 21 sq ft



First Floor  
 Approximate Gross Internal Area  
 48.71 sq m / 524 sq ft



Second Floor  
 Approximate Gross Internal Area  
 48.84 sq m / 526 sq ft



Third Floor  
 Approximate Gross Internal Area  
 2.18 sq m / 23 sq ft

