



White Hart Lane

Barnes, SW13

£1,600 per month
(£369.23 per week)

A one bedroom flat situated on sought-after White Hart Lane. The property comprises a light reception room, a well-appointed kitchen, one double bedroom and a bathroom. The location boasts several independent retailers and eateries. It further offers proximity to Barnes Bridge Station and the Thames.

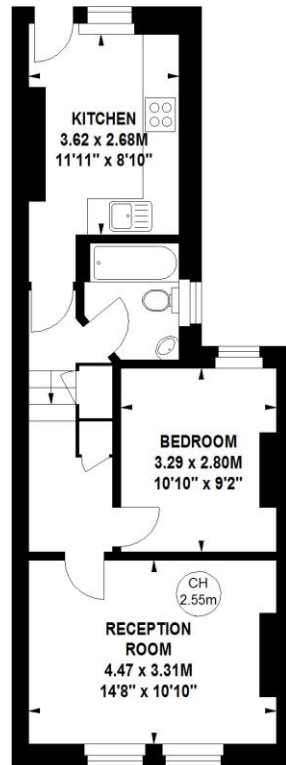
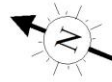
CHESTERTONS

White Hart Lane, SW13

Approximate gross internal area

46.45 sq m / 500 sq ft

Key :
CH - Ceiling Height



First Floor

The floor plan is not to scale and measurements and areas shown are approximate and therefore should be used for illustrative purposes only. The plan has been prepared in accordance with the RICS code of Measuring Practice and whilst we have confidence in the information produced, it must not be relied on. If there is any aspect of particular importance, you should carry out or commission your own inspection of the property.
Copyright of FeaturePRO.

Minimum Term: 12 months
Deposit Required: five weeks rent (£1,846.15)
Local Authority: London Borough of Richmond upon Thames
Council Tax Band: C
EPC Rating: D
Part-Furnished / Unfurnished

Energy Efficiency Rating		
	Current	Potential
Very energy efficient - lower running costs		
(92+) A		
(81-91) B		
(69-80) C		
(55-68) D	55	68
(39-54) E		
(21-38) F		
(1-20) G		
Not energy efficient - higher running costs		
England, Scotland & Wales		
EU Directive 2002/91/EC		

Chestertons Barnes Lettings

68-69 Barnes High Street
Barnes
London
SW13 9LD
barnes@chestertons.co.uk
020 8748 7733
chestertons.co.uk

Additional tenant charges apply (fees apply to non-AST tenancies only)
Tenancy Agreement Fee: £300
References per Tenant/Guarantor: £60
Inventory Check: Approx. £100-£250 (inc. VAT)
chestertons.co.uk/property-to-rent/applicable-fees

Chesterton Global Ltd trading as Chestertons for themselves and for the vendor of this property whose agents they are, give notice that (i) these particulars do not constitute any part of an offer or contract, (ii) all statements contained within these particulars are made without responsibility on the part of Chestertons or the vendor, (iii) whilst made in good faith, none of the statements contained within these particulars are to be relied upon as a statement or representation of fact, (iv) any intending purchasers must satisfy themselves by inspection or otherwise as to the correctness of each of the statements contained within these particulars, (v) the vendor does not make or give either Chestertons or any person in their employment any authority to make or give representation or warranty whatsoever in relation to this property. Wide angle lenses may be used. ©Copyright Chestertons | Chesterton Global Ltd | Registered Office 40 Connaught Street, Hyde Park, London W2 2AB Registered Company Number 05334580.



This paper is
100% recyclable