



Keble Place

Barnes, SW13

£3,250 per month
(£750 per week)

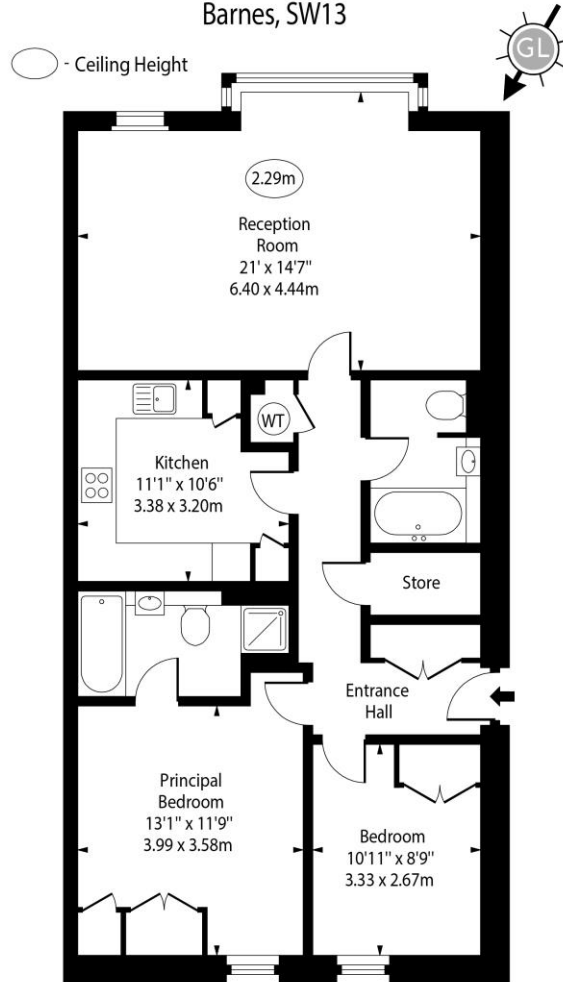
A modern apartment on the first floor of, purpose-built, Keble Place in Harrods Village. The property benefits from lift access, an allocated parking space, 24-hour concierge, manicured communal gardens and a residents' leisure suite with a swimming pool, a gym and a sauna.

Accommodation includes a generous reception room with floor-to-ceiling windows, a well-appointed kitchen, a principal bedroom with an en-suite bathroom, a second double bedroom and another bathroom. There is additional storage space in the hallway.

Harrods Village is a gated-development, close to The Thames, in north Barnes. It balances tranquil living with convenient access to local amenities and to public transport for commuting.

CHESTERTONS

Keble Place,
Barnes, SW13



First Floor

Approx Gross Internal Area 921 Sq Ft - 85.56 Sq M

For Illustration Purposes Only - Not To Scale
www.goldlens.co.uk
Ref. No. 017650K

Minimum Term: 12 months
Deposit Required: five weeks rent (£3,750)
Local Authority: London Borough of Richmond upon Thames
Council Tax Band: F
EPC Rating: B
Part-Furnished / Unfurnished

Energy Efficiency Rating		
	Current	Potential
Very energy efficient - lower running costs		
(92+) A		
(81-91) B		
(69-80) C	82	82
(55-68) D		
(39-54) E		
(21-38) F		
(1-20) G		
Not energy efficient - higher running costs		
England, Scotland & Wales		
EU Directive 2002/91/EC		

Chestertons Barnes Lettings

68-69 Barnes High Street
Barnes
London
SW13 9LD

lettings.barnes@chestertons.co.uk
020 8748 7733
chestertons.co.uk

Additional tenant charges apply (fees apply to non-AST tenancies only)

Tenancy Agreement Fee: £300

References per Tenant/Guarantor: £60

Inventory Check: Approx. £100-£250 (inc. VAT)

chestertons.co.uk/property-to-rent/applicable-fees

Chesterton UK Services Limited trading as Chestertons for themselves and for the vendor of this property whose agents they are, give notice that (i) these particulars do not constitute any part of an offer or contract, (ii) all statements contained within these particulars are made without responsibility on the part of Chestertons or the vendor, (iii) whilst made in good faith, none of the statements contained within these particulars are to be relied upon as a statement or representation of fact, (iv) any intending purchasers must satisfy themselves by inspection or otherwise as to the correctness of each of the statements contained within these particulars, (v) the vendor does not make or give either Chestertons or any person in their employment any authority to make or give representation or warranty whatsoever in relation to this property. Wide angle lenses may be used. ©Copyright Chestertons | Chesterton Global Ltd | Registered Office 40 Connaught Street, Hyde Park, London W2 2AB Registered Company Number 05334580.



This paper is
100% recyclable