



Queen's Ride

Barnes, SW13

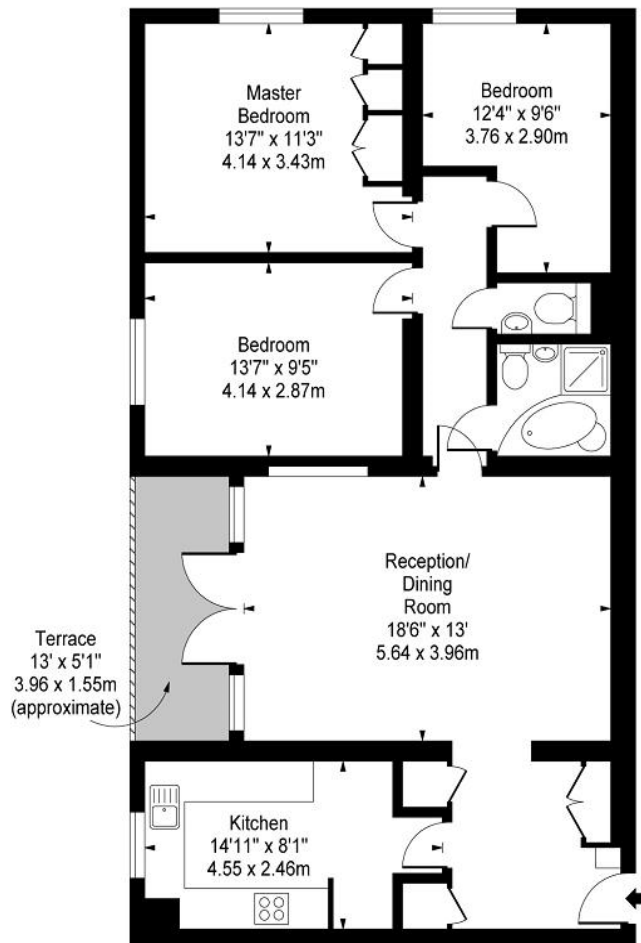
A generously-sized ground floor flat, nestled on Queen's Ride, at the edge of Barnes Common. The property offers a large reception room with a south-facing terrace, a spacious kitchen, three double bedrooms, a bathroom and a cloakroom.

Roehampton Court boasts off-street parking on a first come, first served basis and lawned communal gardens. Its location affords convenient commuting via nearby Barnes Station and local bus routes. It further provides proximity to the amenities of both Barnes and Putney.

£2,495 per month
(£575.77 per week)

CHESTERTONS

**Roehampton Court,
Queens Ride,
Barnes, SW13**



Ground Floor

Approx Gross Internal Area **970 Sq Ft - 90.11 Sq M**

For Illustration Purposes Only - Not To Scale
Floor Plan by www.bpmmediagroup.com
Ref: No. P50153

Minimum Term: six months
Deposit Required: five weeks rent (£2,878.85)
Local Authority: London Borough of Richmond upon Thames
Council Tax Band: E
EPC Rating: C
Furnished / Part-Furnished / Unfurnished

Energy Efficiency Rating		
	Current	Potential
Very energy efficient - lower running costs		
(92+) A		
(81-91) B		
(69-80) C	77	80
(55-68) D		
(39-54) E		
(21-38) F		
(1-20) G		
Not energy efficient - higher running costs		
England, Scotland & Wales		
EU Directive 2002/91/EC		

Chestertons Barnes Lettings

68-69 Barnes High Street
Barnes
London
SW13 9LD

lettings.barnes@chestertons.co.uk
020 8748 7733
chestertons.co.uk

Additional tenant charges apply (fees apply to non-AST tenancies only)

Tenancy Agreement Fee: £300

References per Tenant/Guarantor: £60

Inventory Check: Approx. £100-£250 (inc. VAT)

chestertons.co.uk/property-to-rent/applicable-fees

Chesterton UK Services Limited trading as Chestertons for themselves and for the vendor of this property whose agents they are, give notice that (i) these particulars do not constitute any part of an offer or contract, (ii) all statements contained within these particulars are made without responsibility on the part of Chestertons or the vendor, (iii) whilst made in good faith, none of the statements contained within these particulars are to be relied upon as a statement or representation of fact, (iv) any intending purchasers must satisfy themselves by inspection or otherwise as to the correctness of each of the statements contained within these particulars, (v) the vendor does not make or give either Chestertons or any person in their employment any authority to make or give representation or warranty whatsoever in relation to this property. Wide angle lenses may be used. ©Copyright Chestertons | Chesterton Global Ltd | Registered Office 40 Connaught Street, Hyde Park, London W2 2AB Registered Company Number 05334580.

