



Brasenose Drive

Barnes, SW13

£5,000 per month
(£1,153.85 per week)

A spacious apartment, occupying 2,003 square feet, on the first floor of a converted depository building in sought-after Harrods Village. The property boasts lift access and allocated parking.

Accommodation includes a vast dual-aspect reception and dining room, a large kitchen and breakfast room with a separate utility room, two double bedrooms with fitted wardrobes and en-suite bathrooms, a further double bedroom and another bathroom.

The Harrods Village development is nestled off renowned Castelnau, in north Barnes, and benefits from 24-hour concierge, manicured communal gardens and a leisure suite with a swimming pool, sauna and gym.

Castelnau provides the necessary amenities, several independent eateries and public transport links. Nearby Lonsdale Road is home to outstanding local schools, St. Paul's Boys & Juniors and The Harroddian.

CHESTERTONS



Brasenose Drive

Barnes, SW13

- Converted Harrods Depository Building
- Modern First Floor Apartment
- Three Double Bedrooms & Three Bathrooms
- Allocated Parking
- Sought-After Harrods Village Location



Minimum Term: six months
Deposit Required: six weeks rent (£6,923.08)
Local Authority: London Borough of Richmond upon Thames
Council Tax Band: H
EPC Rating: C
Unfurnished

Energy Efficiency Rating		
	Current	Potential
Very energy efficient - lower running costs		
(92+) A		
(81-91) B		
(69-80) C	81	82
(55-68) D		
(39-54) E		
(21-38) F		
(1-20) G		
Not energy efficient - higher running costs		
England, Scotland & Wales EU Directive 2002/91/EC		

Chestertons Barnes Lettings

68-69 Barnes High Street
 Barnes
 London
 SW13 9LD
 Lettings.barnes@chestertons.co.uk
 020 8748 7733
chestertons.co.uk

Additional tenant charges apply (fees apply to non-AST tenancies only)

Tenancy Agreement Fee: £300

References per Tenant/Guarantor: £60

Inventory Check: Approx. £100-£250 (inc. VAT)

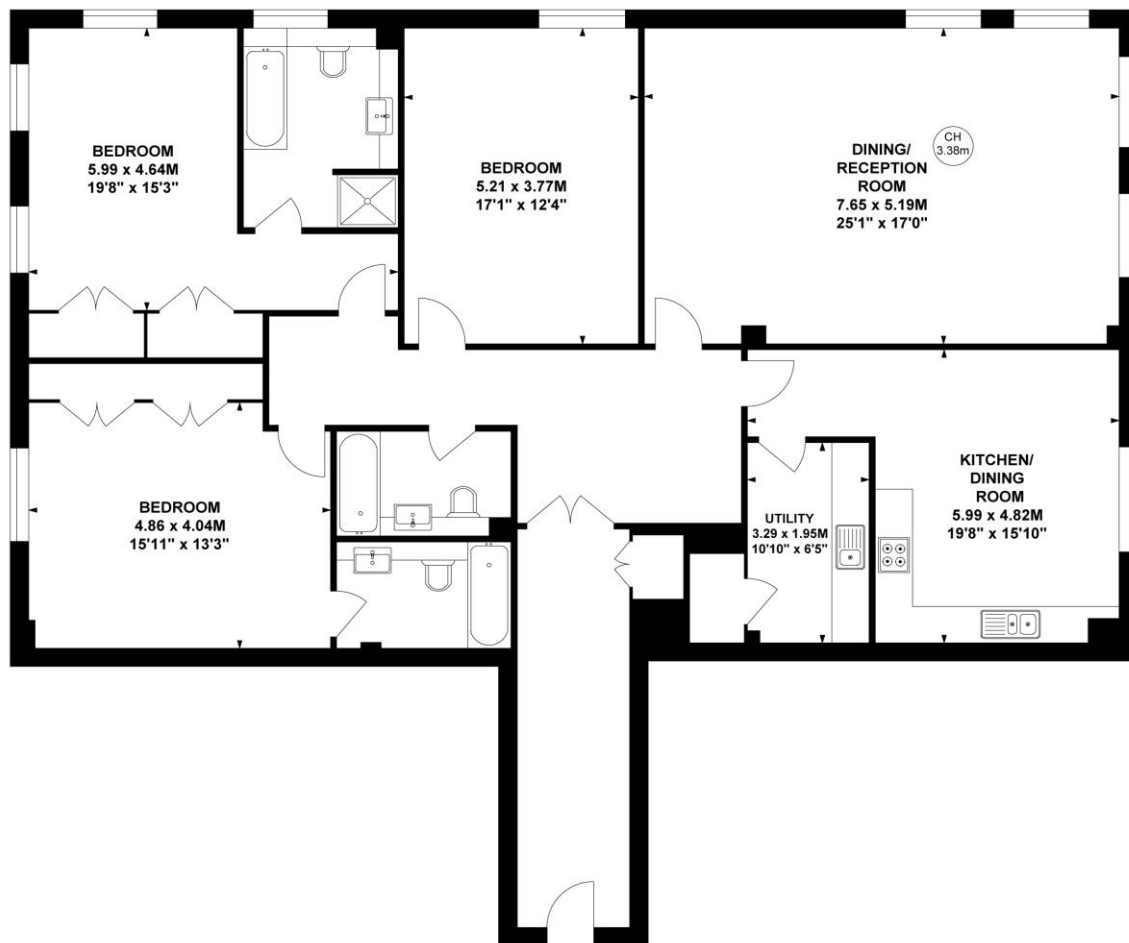
chestertons.co.uk/property-to-rent/applicable-fees

Richard Burbidge Mansions, SW13

Approximate gross internal area

186.11 sq m / 2003 sq ft

Key :
CH - Ceiling Height



First Floor

Not to scale, for guidance only and must not be relied upon as a statement of fact.
All measurements and areas are approximate only

