



# Brasenose Drive

Barnes, SW13

£3,450 per month  
(£796.15 per week)

A sunny apartment on the first floor of a modern building in sought-after Harrods Village. The property boasts lift access, a south-west facing balcony and an allocated parking space. It is offered furnished.

Accommodation includes a generous dual-aspect reception and dining room with floor-to-ceiling windows and a fully-fitted kitchen. The principal bedroom suite has built-in wardrobes and a bathroom with a bathtub and separate shower. There is a second double bedroom and a second well-appointed bathroom, as well as additional storage space in the hallway.

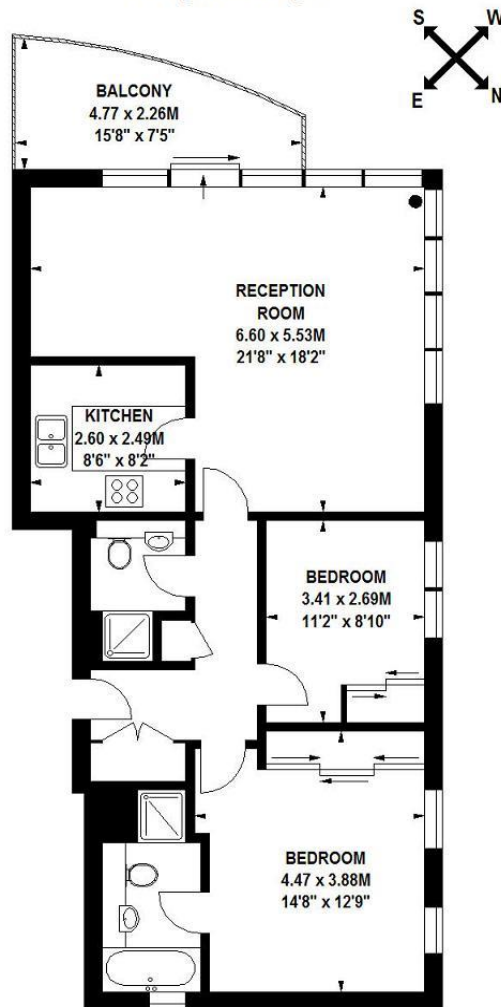
Harrods Village is a well-maintained gated development in north Barnes. It benefits from 24-hour concierge, manicured communal gardens and a leisure suite including a swimming pool, gym, sauna and meeting room. Necessary amenities and public transport is available on nearby Castelnau.

**CHESTERTONS**

## Wrenn House, SW13

Approximate gross internal area

81 sq m / 872 sq ft



### First Floor

Illustration for identification purposes only, not to scale

All measurements are maximum, and includes wardrobes and window bays where applicable

Prepared by Mays Floorplans © . Tel 020 8871 4668

Minimum Term: 12 months  
 Deposit Required: five weeks rent (£3,980.77)  
 Local Authority: London Borough Of Richmond Upon Thames  
 Council Tax Band: G  
 EPC Rating: B  
 Furnished

Energy Efficiency Rating		
	Current	Potential
Very energy efficient - lower running costs		
(92+) A		
(81-91) B		
(69-80) C	81	84
(55-68) D		
(39-54) E		
(21-38) F		
(1-20) G		
Not energy efficient - higher running costs		
England, Scotland & Wales		
EU Directive 2002/91/EC		

### Chestertons Barnes Lettings

68-69 Barnes High Street  
 Barnes  
 London  
 SW13 9LD  
[lettings.barnes@chestertons.co.uk](mailto:lettings.barnes@chestertons.co.uk)  
 020 8748 7733  
[chestertons.co.uk](http://chestertons.co.uk)

Additional tenant charges apply (fees apply to non-AST tenancies only)

Tenancy Agreement Fee: £300

References per Tenant/Guarantor: £60

Inventory Check: Approx. £100-£250 (inc. VAT)

[chestertons.co.uk/property-to-rent/applicable-fees](http://chestertons.co.uk/property-to-rent/applicable-fees)

Chesterton Global Ltd trading as Chestertons for themselves and for the vendor of this property whose agents they are, give notice that (i) these particulars do not constitute any part of an offer or contract, (ii) all statements contained within these particulars are made without responsibility on the part of Chestertons or the vendor, (iii) whilst made in good faith, none of the statements contained within these particulars are to be relied upon as a statement or representation of fact, (iv) any intending purchasers must satisfy themselves by inspection or otherwise as to the correctness of each of the statements contained within these particulars, (v) the vendor does not make or give either Chestertons or any person in their employment any authority to make or give representation or warranty whatsoever in relation to this property. Wide angle lenses may be used. ©Copyright Chestertons | Chesterton Global Ltd | Registered Office 40 Connaught Street, Hyde Park, London W2 2AB Registered Company Number 05334580.



This paper is  
100% recyclable