



Castelnau Row

Barnes, SW13

£3,250 per month
(£750 per week)

A charming period property, with unique features, located on a quiet cul-de-sac close to Hammersmith Bridge. The house benefits from rear off-street parking and a private garden.

Accommodation comprises a generous reception room with space for dining, a sleek kitchen with a full-size skylight, three bedrooms, two modern bathrooms and a cloakroom. There is also a mezzanine above the master bedroom suite.

Set behind renowned Castelnau, Castelnau Row is well-positioned for local schools and for commuting via local bus routes or via Hammersmith Station on foot.

CHESTERTONS



Castelnau Row

Barnes, SW13

- Charming Period Property
- Modern Kitchen & Bathrooms
- Off-Street Parking
- Cul-de-Sac Location
- Convenient for Commuting



Minimum Term: six months
Deposit Required: five weeks rent (£3,750)
Local Authority: London Borough of Richmond upon Thames
Council Tax Band: D
EPC Rating: C
Part-Furnished

Energy Efficiency Rating		Current	Potential
Very energy efficient - lower running costs			
(92-)	A		
(81-91)	B		88
(69-80)	C	69	
(55-68)	D		
(39-54)	E		
(21-38)	F		
(1-20)	G		
Not energy efficient - higher running costs			
England, Scotland & Wales		EU Directive 2002/91/EC	

Chestertons Barnes Lettings

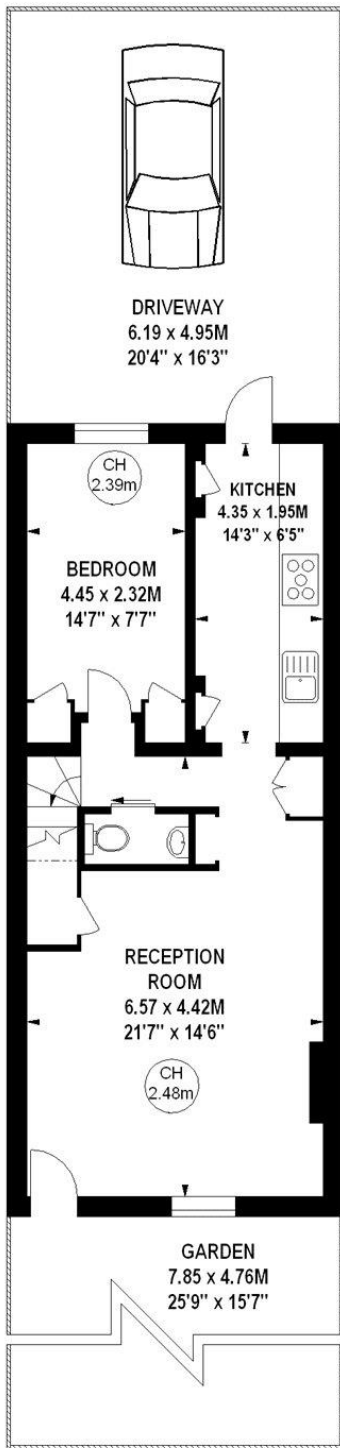
68-69 Barnes High Street
 Barnes
 London
 SW13 9LD
 barnes@chestertons.co.uk
 020 8748 7733
 chestertons.co.uk

Additional tenant charges apply (fees apply to non-AST tenancies only)
 Tenancy Agreement Fee: £300
 References per Tenant/Guarantor: £60
 Inventory Check: Approx. £100-£250 (inc. VAT)
chestertons.co.uk/property-to-rent/applicable-fees

Castelnau Row, SW13

Approximate gross internal area

93.09 sq m / 1002 sq ft



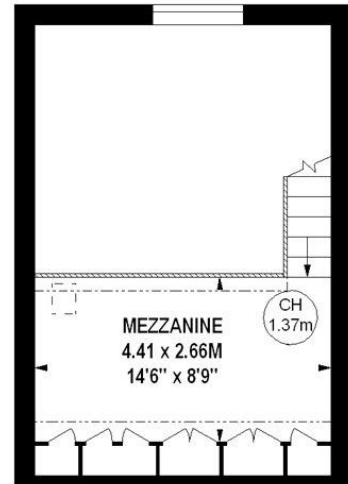
Ground Floor

530 sq ft



First Floor

312 sq ft



Mezzanine

160 sq ft

Key :
CH - Ceiling Height

Illustration For Identification Purposes Only. Not To Scale
*Floorplan Drawn According To RICS Guidelines
Copyright of FeaturePRO

