



# Keble Place

Barnes, SW13

£3,000 per month  
(£692.31 per week)

A modern apartment on the ground floor of purpose built Keble Place in Harrods Village, north Barnes. The property benefits from a residents' swimming pool and gym, an allocated parking space and 24-hour concierge service.

Accommodation comprises a large reception room with space for dining, a good-sized kitchen with ample storage, two generous double bedrooms and two fully-tiled bathrooms.

Harrods Village is an exclusive gated-development, which offers tranquil living close to the river Thames. Necessary amenities and public transport links are within easy walking distance.



# Keble Place

Barnes, SW13

- Modern Ground Floor Flat
- Two Bedrooms & Two Bathrooms
- Residents' Gym & Pool
- Allocated Parking Space
- Harrods Village Development



**Minimum Term:** 12 months  
**Deposit Required:** five weeks rent (£3,461.54)  
**Local Authority:** London Borough of Richmond upon Thames  
**Council Tax Band:** F  
**EPC Rating:** D  
**Furnished / Part-Furnished**

Energy Efficiency Rating		Current	Potential
Very energy efficient - lower running costs			
(92-)	A		
(81-91)	B		
(69-80)	C		
(55-68)	D	66	68
(39-54)	E		
(21-38)	F		
(1-20)	G		
Not energy efficient - higher running costs			
England, Scotland & Wales		EU Directive 2002/91/EC	

**Chestertons Barnes Lettings**

68-69 Barnes High Street  
 Barnes  
 London  
 SW13 9LD  
 barnes@chestertons.co.uk  
 020 8748 7733  
 chestertons.co.uk

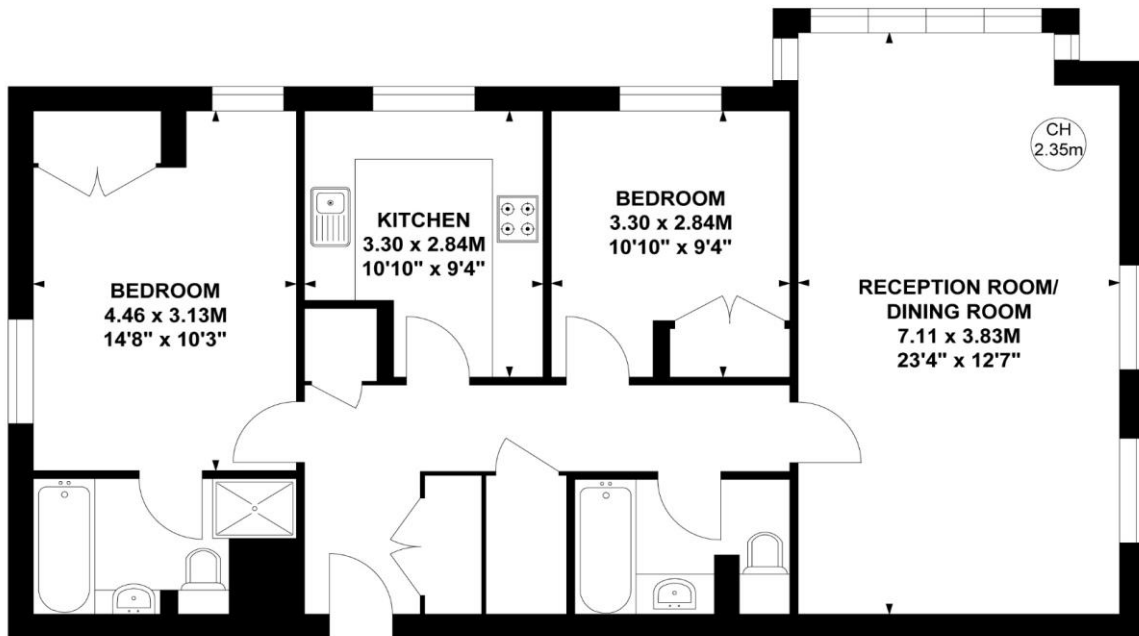
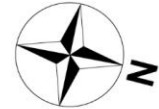
Additional tenant charges apply (fees apply to non-AST tenancies only)

Tenancy Agreement Fee: £300  
 References per Tenant/Guarantor: £60  
 Inventory Check: Approx. £100-£250 (inc. VAT)  
[chestertons.co.uk/property-to-rent/applicable-fees](http://chestertons.co.uk/property-to-rent/applicable-fees)

# Keble Place, SW13

Approximate gross internal area  
83.95 sq m / 903 sq ft

Key :  
CH - Ceiling Height



## Ground Floor

Not to scale, for guidance only and must not be relied upon as a statement of fact.  
All measurements and areas are approximate only

Chesterton Global Ltd trading as Chestertons for themselves and for the vendor of this property whose agents they are, give notice that (i) these particulars do not constitute any part of an offer or contract, (ii) all statements contained within these particulars are made without responsibility on the part of Chestertons or the vendor, (iii) whilst made in good faith, none of the statements contained within these particulars are to be relied upon as a statement or representation of fact, (iv) any intending purchasers must satisfy themselves by inspection or otherwise as to the correctness of each of the statements contained within these particulars, (v) the vendor does not make or give either Chestertons or any person in their employment any authority to make or give representation or warranty whatsoever in relation to this property. Wide angle lenses may be used. ©Copyright Chestertons | Chesterton Global Ltd | Registered Office 40 Connaught Street, Hyde Park, London W2 2AB Registered Company Number 05334580.

