

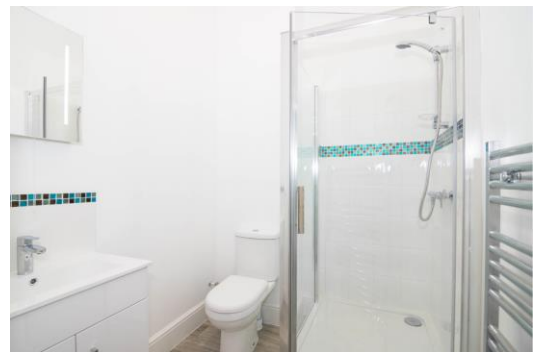


Church Road

Barnes, SW13

£1,700 per month
(£392.31 per week)

A generous flat in the heart of Barnes Village. The property offers a reception room with a high ceiling, a period fireplace and double-glazed sash windows overlooking the delights of Church Road. Double doors open onto the fitted kitchen and breakfast room. The bedroom is a well-proportioned double, accessed via its own staircase, and there is a well-appointed shower room. The location is convenient for the amenities of Barnes High Street and for local transport links.



Church Road

Barnes, SW13

- Generous One Bedroom Flat
- First Floor Overlooking Church Road
- Barnes Village Location
- Convenient for Public Transport
- Offered Unfurnished



Minimum Term: six months
Deposit Required: five weeks rent (£1,961.55)
Local Authority: London Borough of Richmond upon Thames
Council Tax Band: D
EPC Rating: D
Unfurnished

Energy Efficiency Rating		Current	Potential
Very energy efficient - lower running costs			
(92+)	A		
(81-91)	B		
(69-80)	C	73	76
(55-68)	D		
(39-54)	E		
(21-38)	F		
(1-20)	G		
Not energy efficient - higher running costs			
England, Scotland & Wales		EU Directive 2002/91/EC	

Chestertons Barnes Lettings

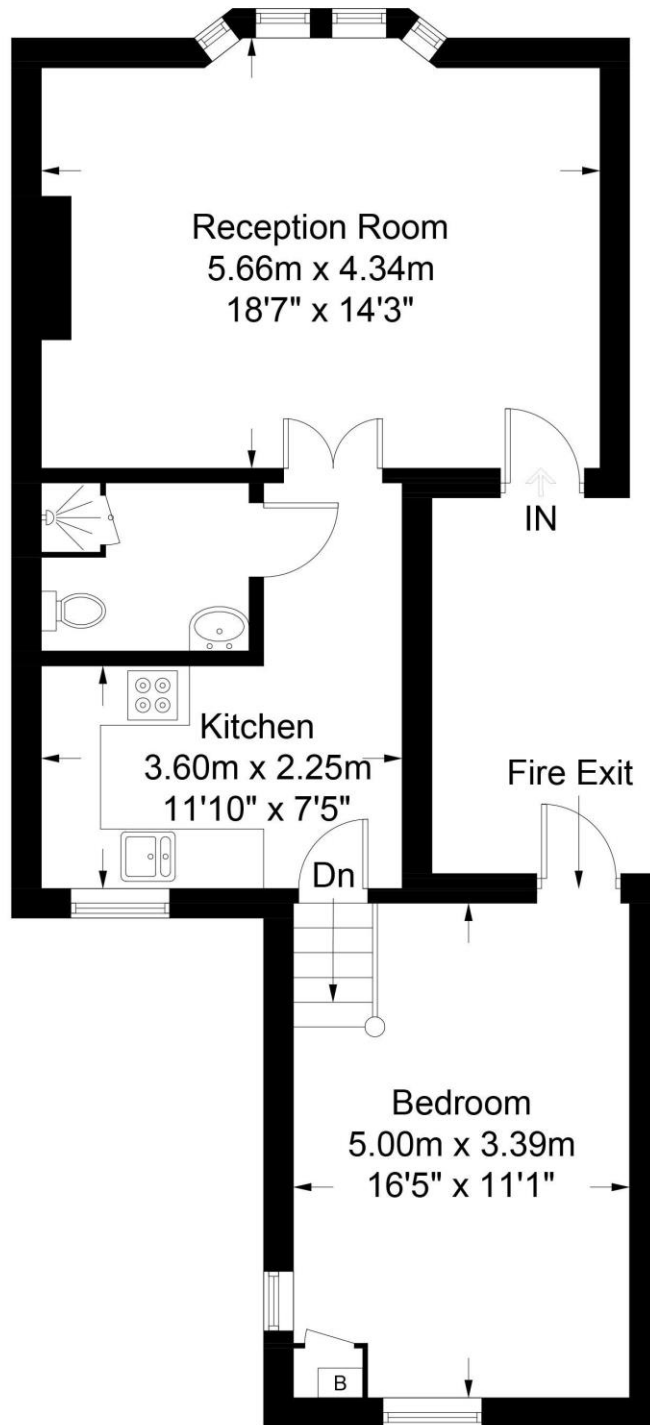
68-69 Barnes High Street
 Barnes
 London
 SW13 9LD
 barnes@chestertons.co.uk
 020 8748 7733
 chestertons.co.uk

Additional tenant charges apply (fees apply to non-AST tenancies only)

Tenancy Agreement Fee: £300
 References per Tenant/Guarantor: £60
 Inventory Check: Approx. £100-£250 (inc. VAT)
chestertons.co.uk/property-to-rent/applicable-fees

Church Road

Approximate Gross Internal Area = 56.4 sq m / 607 sq ft



Every attempt is made to assure accuracy, however measurements are approximate and for illustrative purposes only. Not to scale. (ID565216)