



Keble Place

Barnes, SW13

£3,000 per month
(£692.31 per week)

A two bedroom apartment located within this popular gated development. Situated on the upper floor with a lift service, the accommodation comprises a fully fitted kitchen, two double bedrooms, two bathrooms (one ensuite), spacious reception room allowing plenty of natural light to flood in.

Harrods Village is an exclusive gated development in Barnes, with a 24-hour concierge and an on-site gymnasium and swimming pool. It is located on the banks of the river Thames and is ideal for commuting via Hammersmith Station (Hammersmith Bridge currently open to foot and cycle traffic) and there are several bus routes to Barnes Station for regular access into London Waterloo.

There are excellent schools nearby, such as St Paul's, St Paul's Juniors, The Swedish School, The Harrodian and Lowther and St Osmund's Primary Schools.



Keble Place

Barnes, SW13

- Two bedrooms
- Two bathrooms
- 24-hour concierge
- Spa and Gym facilities



Minimum Term: 12 months
Deposit Required: 5 weeks rent
Local Authority: Richmond upon Thames
Council Tax Band: F
EPC Rating: C
Unfurnished

Energy Efficiency Rating		Current	Potential
Very energy efficient - lower running costs			
(92-100)	A		
(81-91)	B		
(69-80)	C	71	74
(55-68)	D		
(39-54)	E		
(21-38)	F		
(1-20)	G		
Not energy efficient - higher running costs			
England, Scotland & Wales		EU Directive 2002/91/EC	

Chestertons Barnes Village Lettings

68-69 Barnes High Street
 Barnes
 London
 SW13 9LD
 barnes@chestertons.co.uk
 02087487733
 chestertons.co.uk

Additional tenant charges apply (fees apply to non-AST tenancies only)
 Tenancy Agreement Fee: £300
 References per Tenant/Guarantor: £60
 Inventory check (approx. £100 – £250 inc. VAT)
chestertons.co.uk/property-to-rent/applicable-fees

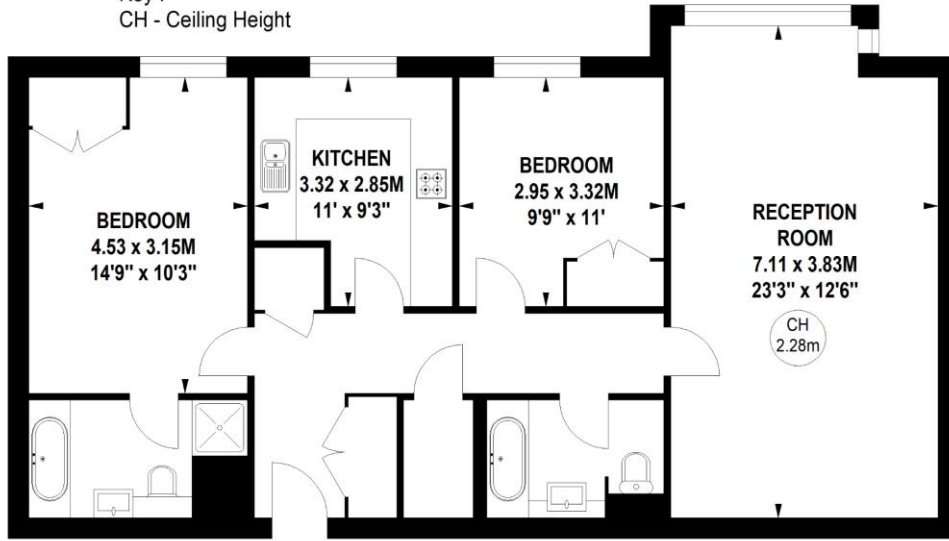
Keble Place, SW13

Approximate gross internal area

85.19 sq m / 917 sq ft



Key :
CH - Ceiling Height



Second Floor

Not to scale, for guidance only and must not be relied upon as a statement of fact.
All measurements and areas are approximate only

