



Arundel Terrace

Barnes, SW13

£2,800 per month
(£646.15 per week)

A charming mansion flat, on the raised ground floor of a handsome Victorian building, nestled on a quiet cul-de-sac in north Barnes. The property boasts stylish interiors, large traditional windows, a bay-fronted reception room with a Juliet balcony and a south-facing balcony overlooking a communal garden.

The accommodation is comprised of the inviting reception room, a generous kitchen with space for dining and direct access to the rear balcony, two light and well-proportioned bedrooms and a modern bathroom. The communal garden offers a lawn and mature shrubbery.

Arundel Terrace is conveniently located for local schools and public transport links. All necessary amenities are available on adjoining Castelnau. The picturesque Thames towpath is moments from the property and Barnes Village is a short trip south along Castelnau or renowned Lonsdale Road.

CHESTERTONS



Arundel Terrace

Barnes, SW13

- Raised Ground Floor Apartment
- Handsome Victorian Building with Traditional Features
- South-Facing Balcony Overlooking Communal Garden
- Juliet Balcony Off Bay-Fronted Reception Room
- Conveniently Located for Schools & Transport



Minimum Term: six months
Deposit Required: five week rent (£3,230.77)
Local Authority: London Borough of Richmond upon Thames
Council Tax Band: E
EPC Rating: C
Unfurnished

Energy Efficiency Rating		Current	Potential
Very energy efficient - lower running costs			
(92-)	A		
(81-91)	B		
(69-80)	C		77
(55-68)	D	64	
(39-54)	E		
(21-38)	F		
(1-20)	G		
Not energy efficient - higher running costs			
England, Scotland & Wales		EU Directive 2002/91/EC	

Chestertons Barnes Lettings

68-69 Barnes High Street
 Barnes
 London
 SW13 9LD
 barnes@chestertons.co.uk
 020 8748 7733
 chestertons.co.uk

Additional tenant charges apply (fees apply to non-AST tenancies only)

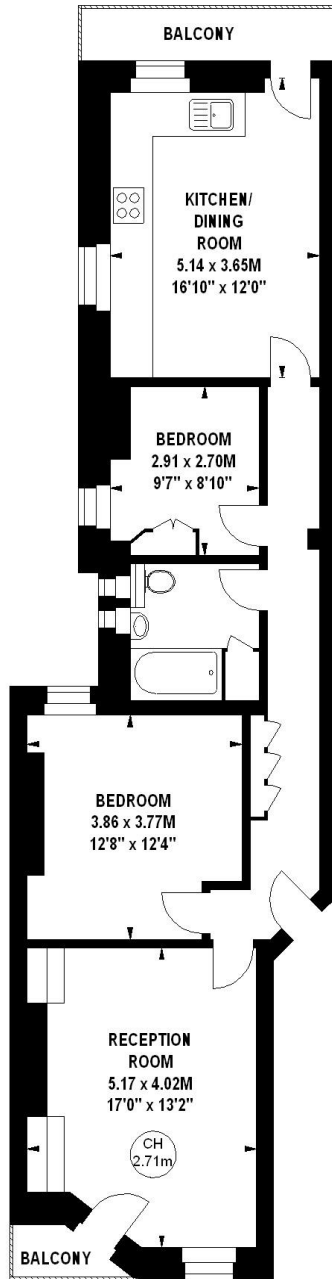
Tenancy Agreement Fee: £300
 References per Tenant/Guarantor: £60
 Inventory Check: Approx. £100-£250 (inc. VAT)
chestertons.co.uk/property-to-rent/applicable-fees

Arundel Terrace, SW15

Approximate gross internal area

77.39 sq m / 833 sq ft

Key :
CH - Ceiling Height



Raised Ground Floor

The floor plan is not to scale and measurements and areas shown are approximate and therefore should be used for illustrative purposes only. The plan has been prepared in accordance with the RICS code of Measuring Practice and whilst we have confidence in the information produced, it must not be relied on. If there is any aspect of particular importance, you should carry out or commission your own inspection of the property.
Copyright of FeaturePRO.

