



# Willow Avenue

Barnes, SW13

£2,800 per month  
(£646.15 per week)

A well-proportioned apartment set on the ground floor of a well-kept gated development moments from Barnes Pond. The property is offered furnished and benefits from a communal garden and allocated private parking.

Accommodation includes a spacious reception room with space for dining, a large bay window and French doors to the garden. There is a well-appointed kitchen and there are two hallway cupboards for storage.

The principal bedroom is a generous double with an en-suite bathroom, ample storage space and direct access to the garden. The second bedroom is another double and there is a separate shower room.

The Coterie Apartments is a charming gated development located moments from Barnes Green, the Pond and Beverley Brook. Barnes and Barnes Bridge stations are short walks away and St. Osmund's Primary School is nearby.

**CHESTERTONS**



# Willow Avenue

## Barnes, SW13

- Well-Proportioned Modern Apartment
- Ground Floor with Doors to Communal Gardens
- Two Double Bedrooms & Two Bathrooms
- Gated Development with Private Parking
- Located Off Barnes Green



---

**Minimum Term:** 12 months  
**Deposit Required:** five weeks rent (£3,230.77)  
**Local Authority:** London Borough of Richmond upon Thames  
**Council Tax Band:** G  
**EPC Rating:** B  
**Furnished**

EPC TBC

---

***Chestertons Barnes Lettings***

68-69 Barnes High Street  
Barnes  
London  
SW13 9LD  
barnes@chestertons.co.uk  
020 8748 7733  
chestertons.co.uk

Additional tenant charges apply (fees apply to non-AST tenancies only)

Tenancy Agreement Fee: £300

References per Tenant/Guarantor: £60

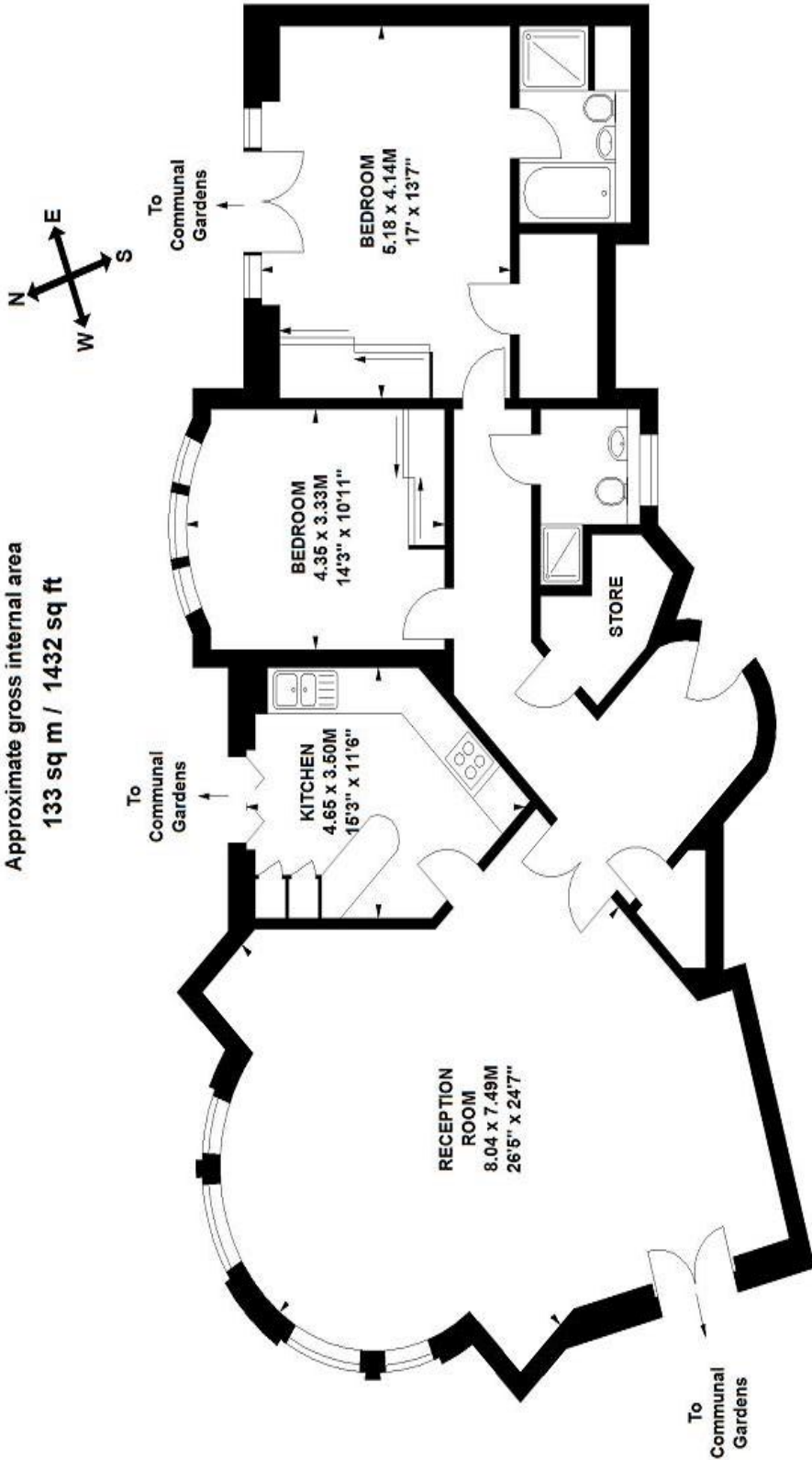
Inventory Check: Approx. £100-£250 (inc. VAT)

[chestertons.co.uk/property-to-rent/applicable-fees](https://www.chestertons.co.uk/property-to-rent/applicable-fees)

# Coterie Apartment, SW13

Approximate gross internal area

133 sq m / 1432 sq ft



Ground Floor

Illustration for identification purposes only, not to scale  
All measurements are maximum, and includes wardrobes and window bays where applicable  
Prepared by Mays Floorplans © . Tel 020 8871 4668

