



Cleveland Gardens

Barnes, SW13

£5,000 per month
(£1,153.85 per week)

An exquisite end-of-terrace house located in the heart of Barnes Village. The property has recently been renovated to a high standard throughout and benefits from a south-west facing garden and a roof terrace.

The ground floor comprises a double reception room, currently incorporating a dining area, a stylish kitchen with French doors to the garden and a separate utility room and a downstairs cloakroom.

Upstairs, the first floor provides two generous double bedrooms, a luxurious bathroom with a bathtub and a shower and a south west facing roof terrace.

The property is set in a prime location for the delights of Barnes High Street, including the Pond and weekly Farmers' Market. Barnes Bridge Station and the Thames are moments from the property and it is in Conservation area CA1 Barnes Green.



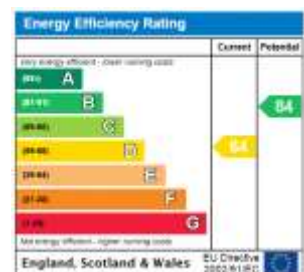
Cleveland Gardens

Barnes, SW13

- Short Let (Bills Included)
- End of Terrace House
- Prime Barnes Village Location
- Renovated to a High Standard
- South West Facing Garden



Minimum Term: 1 months
Deposit Required: 2 weeks rent (£2,307.69)
Local Authority: Richmond
Council Tax Band: F
EPC Rating: D
Furnished



Chestertons Barnes Lettings

68-69 Barnes High Street
Barnes
London
SW13 9LD
lettings.barnes@chestertons.co.uk
020 8748 7733
chestertons.co.uk

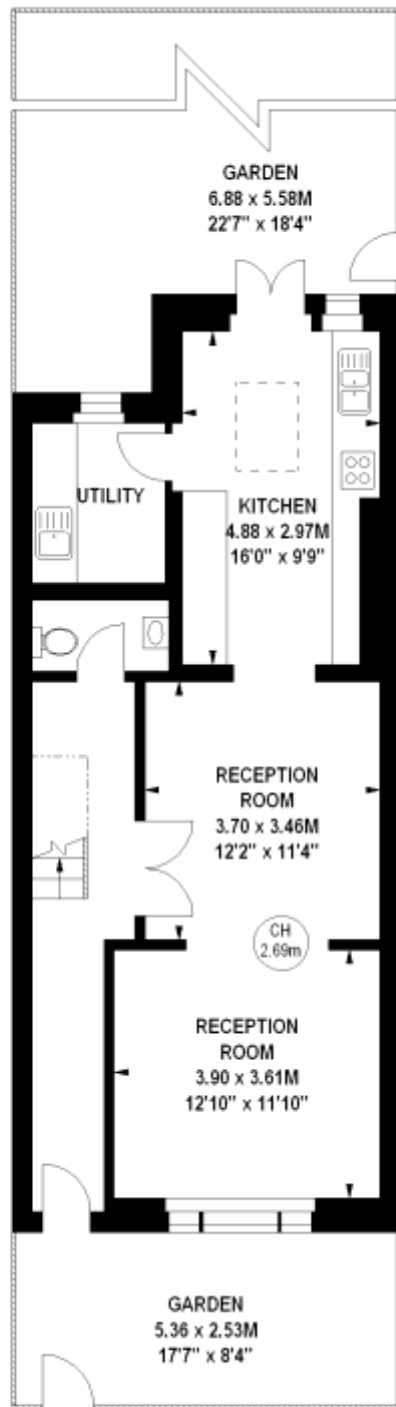
Additional tenant charges apply (fees apply to non-AST tenancies only)

Tenancy Agreement Fee: £300
References per Tenant/Guarantor: £60
Inventory Check: Approx. £100-£250 (inc. VAT)
[chestertons.co.uk/property-to-rent/applicable-fees](https://www.chestertons.co.uk/property-to-rent/applicable-fees)

Cleveland Gardens, SW13

Approximate gross internal area

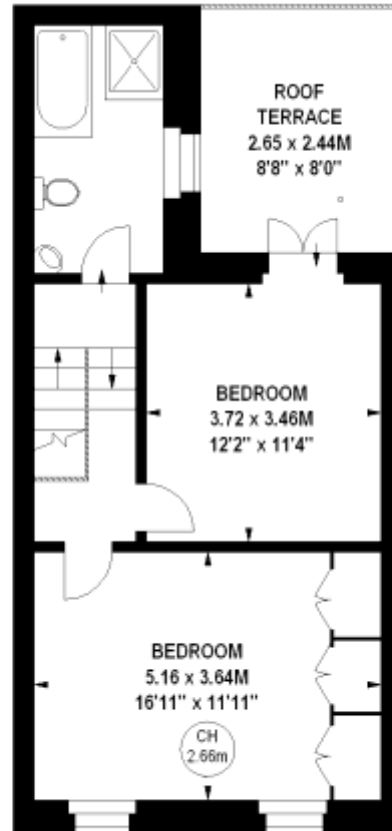
108.69 sq m / 1170 sq ft



673 sq ft
Ground Floor



Key :
CH - Ceiling Height



497 sq ft
First Floor

The floor plan is not to scale and measurements and areas shown are approximate and therefore should be used for illustrative purposes only. The plan has been prepared in accordance with the RICS code of Measuring Practice and whilst we have confidence in the information produced, it must not be relied on. If there is any aspect of particular importance, you should carry out or commission your own inspection of the property.
Copyright of FeaturePRO.