



The Terrace

Barnes, SW13

£3,300 per month
(£761.54 per week)

A generous riverside apartment, measuring approximately 1,068 square feet, boasting panoramic views of the Thames.

The property offers a light and spacious L-shaped reception and dining room, a well-appointed kitchen, two double bedrooms and two bathrooms.

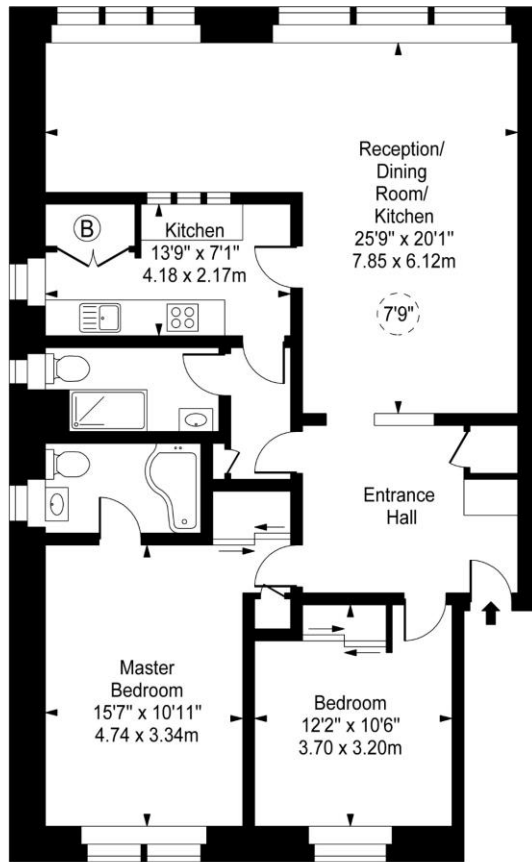
The principal bedroom is large with an en-suite bathroom. The second bedroom is also a well-proportioned double bedroom and is serviced by a separate shower room.

River House is a well-maintained building with secure entry and a lift. It is conveniently located for the amenities of both the Village and White Hart Lane. For commuters, Barnes Bridge Station is approximately 300 metres from the property.

CHESTERTONS

River House, SW13

- Ceiling Height



First Floor

Approx Gross Internal Area **1068 Sq Ft - 99.22 Sq M**

For Illustration Purposes Only - Not To Scale
www.goldlens.co.uk
Ref. No. 014267AG

Minimum Term: six months
Deposit Required: 5 weeks rent (£3,807.69)
Local Authority: London Borough of Richmond upon Thames
Council Tax Band: F
EPC Rating: B
Unfurnished

| Energy Efficiency Rating | | |
|---|---------|-----------|
| | Current | Potential |
| Very energy efficient - lower running costs | | |
| (92+) A | | |
| (81-91) B | | |
| (69-80) C | 81 | 83 |
| (55-68) D | | |
| (39-54) E | | |
| (21-38) F | | |
| (1-20) G | | |
| Not energy efficient - higher running costs | | |
| England, Scotland & Wales | | |
| EU Directive 2002/91/EC | | |

Chestertons Barnes Lettings

68-69 Barnes High Street
Barnes
London
SW13 9LD
barnes@chestertons.co.uk
020 8748 7733
chestertons.co.uk

Additional tenant charges apply (fees apply to non-AST tenancies only)
Tenancy Agreement Fee: £300
References per Tenant/Guarantor: £60
Inventory Check: Approx. £100-£250 (inc. VAT)
chestertons.co.uk/property-to-rent/applicable-fees

Chesterton Global Ltd trading as Chestertons for themselves and for the vendor of this property whose agents they are, give notice that (i) these particulars do not constitute any part of an offer or contract, (ii) all statements contained within these particulars are made without responsibility on the part of Chestertons or the vendor, (iii) whilst made in good faith, none of the statements contained within these particulars are to be relied upon as a statement or representation of fact, (iv) any intending purchasers must satisfy themselves by inspection or otherwise as to the correctness of each of the statements contained within these particulars, (v) the vendor does not make or give either Chestertons or any person in their employment any authority to make or give representation or warranty whatsoever in relation to this property. Wide angle lenses may be used. ©Copyright Chestertons | Chesterton Global Ltd | Registered Office 40 Connaught Street, Hyde Park, London W2 2AB Registered Company Number 05334580.



This paper is
100% recyclable