

estate agents **auctioneers**

**hollis  
morgan**



**57 Stevens Crescent, Totterdown, Bristol, BS3 4UJ**

**£415,000**



A charming period home with two double bedrooms, impressive open plan living area and courtyard garden. Offered to market with no onward chain.

- Period Home
- Open plan dining area
- Well presented throughout
- Period Features
- Modern Fitted Kitchen
- Basement
- Courtyard Garden
- Basement Area

**The Property**

Ideally positioned in the heart of Totterdown, just a short stroll from the green open spaces of Victoria Park and the vibrant Bristol city centre, 57 Stevens Crescent presents a charming and contemporary family home in one of the city's most desirable neighbourhoods.

This classic Victorian terrace spans two well-appointed floors, offering both character and modern comfort. The ground floor comprises a welcoming front reception room, an elegant dining area, and a stylish kitchen, while the upper-level features two spacious bedrooms and a beautifully finished family bathroom.

Sympathetically decorated throughout, the home is perfectly ready for immediate enjoyment with tasteful, thoughtful finishes throughout.

At the front of the house, the living room provides a tranquil retreat with its warm wooden flooring and striking period cast iron fireplace, setting the tone for the rest of the home. The wooden flooring continues in the adjacent large dining room which seamlessly leads into the well-equipped kitchen. Here, white wall and base units are paired with a rich wooden worktop and metro-style tiles, all set against a statement patterned tiled floor that adds flair and personality. The kitchen is fitted with a double oven, electric hob, and extractor, with a door opening out to a private courtyard garden, paved and easy to maintain, complete with raised beds and a built-in barbecue, perfect for entertaining.

Upstairs, the generously sized main bedroom stretches across the full width of the house and features calming contemporary green walls. The second bedroom is also a comfortable double, ideal as a children room, guests or a home office.

The bathroom is fully tiled and stylishly appointed, offering a modern three-piece white suite comprising bath, WC, and a basin set atop a wooden vanity. A striking copper heated towel rail and a colourful accent tiled wall add a vibrant yet sophisticated touch.

Additional practicality comes in the form of a useful cellar with its own private street access, ideal for secure bike storage or extra space.

This is a home that beautifully blends period charm with modern living, in a location that continues to grow in popularity.

**Location**

The property is located within the popular suburb of Totterdown with excellent local amenities and services are all within close proximity including independent retailers, pubs, bars, cafes and restaurants. Temple Meads and the City Centre are both within walking distance.

**Other Information**

Freehold.

**Please Note**

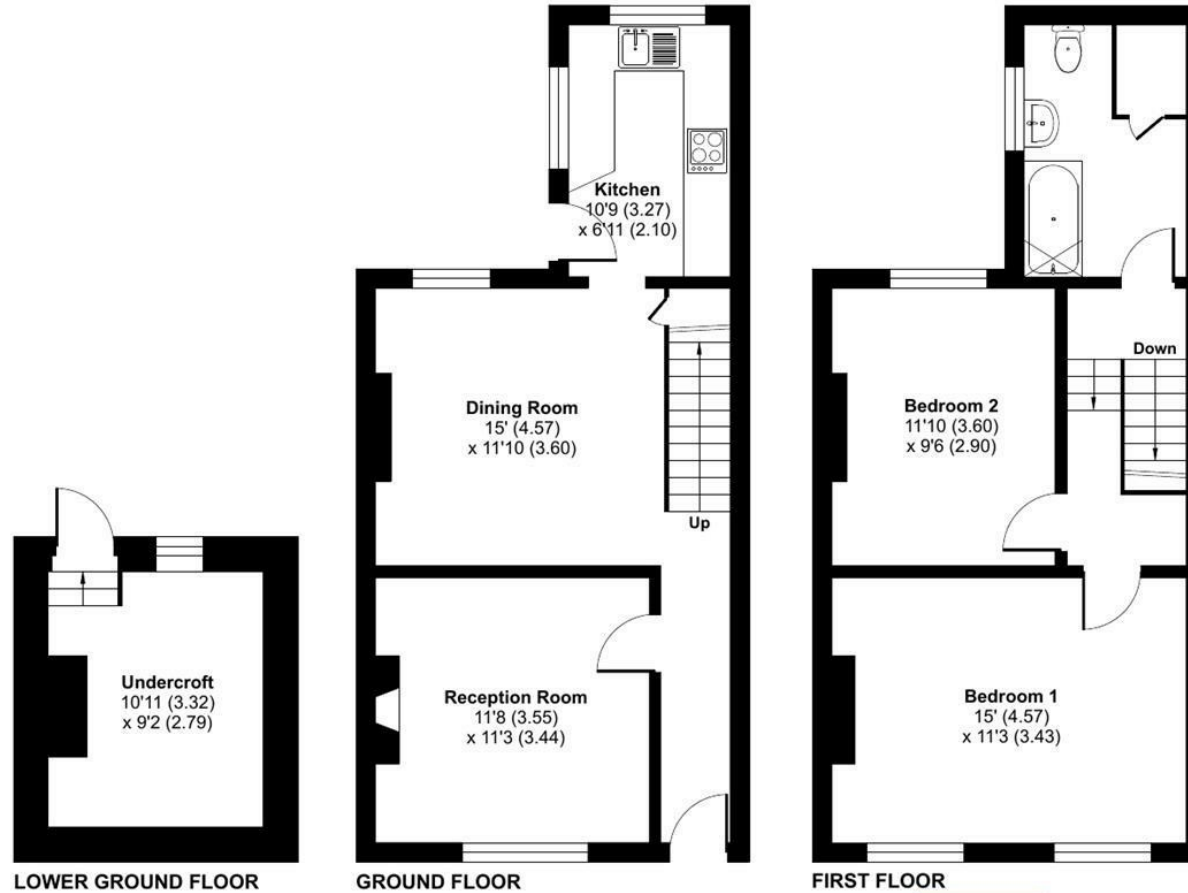
Hollis Morgan endeavour to make our sales details clear, accurate and reliable in line with the Consumer Protection from Unfair Trading Regulations 2008 but they should not be relied on as statements or representations of fact and they do not constitute any part of an offer or contract. All Hollis Morgan references to planning, tenants, boundaries, potential development, tenure etc is to be superseded by the information provided in your solicitors enquiries. It should not be assumed that this property has all the necessary Planning, Building Regulation or other consents. Any services, appliances and heating system(s) listed may not been checked or tested and you should rely on your own investigations. The seller does not make any representation or give any warranty in relation to the property and we have no authority to do so on behalf of the seller. Please note that in some instances the photographs may have been taken using a wide angle lens.



# Stevens Crescent, Bristol, BS3

Approximate Area = 966 sq ft / 89.7 sq m

For identification only - Not to scale



Floor plan produced in accordance with RICS Property Measurement 2nd Edition, Incorporating International Property Measurement Standards (IPMS2 Residential). © nitchecom 2025. Produced for Hollis Morgan. REF:1358966



TEL | 0117 933 9522 | 9 Waterloo Street, Clifton, Bristol BS8 4BT

[www.hollismorgan.co.uk](http://www.hollismorgan.co.uk) | [post@hollismorgan.co.uk](mailto:post@hollismorgan.co.uk)

Hollis Morgan Property Limited, registered in England, registered no 7275716  
Registered address, 5 Upper Belgrave Road, Clifton, Bristol BS8 2XQ

Energy Efficiency Rating	
Current	Potential
	87
	69
England & Wales	
EU Directive 2002/91/EC	

Environmental Impact (CO <sub>2</sub> ) Rating	
Current	Potential
England & Wales	
EU Directive 2002/91/EC	

hollis  
morgan

---