



67, South Parade Mansions Oakfield Road, Clifton, Bristol, BS8 2BB

£500,000



A spacious and well appointed 930 sq ft garden apartment set over two floors with parking, garden and rear access. NO ONWARD CHAIN.

- Garden Flat
- Private Entrance
- Split Level Accommodation
- Generous Proportions
- Rear Garden with access
- Parking
- No Onward Chain
- Grade II Listed

**The Property**

The property occupies the garden level of a stunning listed terrace and has the added benefit of a private entrance. The accommodation is generously proportioned and set over two levels, the upper floor consists of a contemporary tiled en suite shower room and bedroom. The lower level comprises large lounge area (15x15) with sash window to front elevation and fireplace. Bedroom 1 sits in the heart of this level and prospers from integrated storage and overlooks the rear courtyard garden. To the rear is a modern fitted bathroom with low level bath and tiled surround and mains fed shower, W.C and wash basin. The Kitchen area completes the footprint and offers a range of matching wall and base units, laminated worksurfaces with tiled splash backs and French doors leading to a private courtyard garden area with raised sleeper borders and patio area. Rear access and private parking space is provided.

**Location**

Clifton and the surrounding areas, with its Victorian and Georgian architecture, are amongst the most sought after locations in the City. The area offers charm alongside excellent amenities with independent shops, boutiques, cafes, bars and restaurants to be found on both Whiteladies Road and Clifton Village including Clifton Down shopping Centre. The Downs offers four hundred acres of green public space whilst Brunel's Clifton Suspension Bridge provides a gateway to the Ashton Court Estate with its woodlands, mountain bike trails and walks whilst there is excellent access to the exciting Harbourside district, the City Centre and Temple Meads.

**Further Information**

999 Year Lease  
Management Fee - TBC  
Council Tax: E

**Please Note**

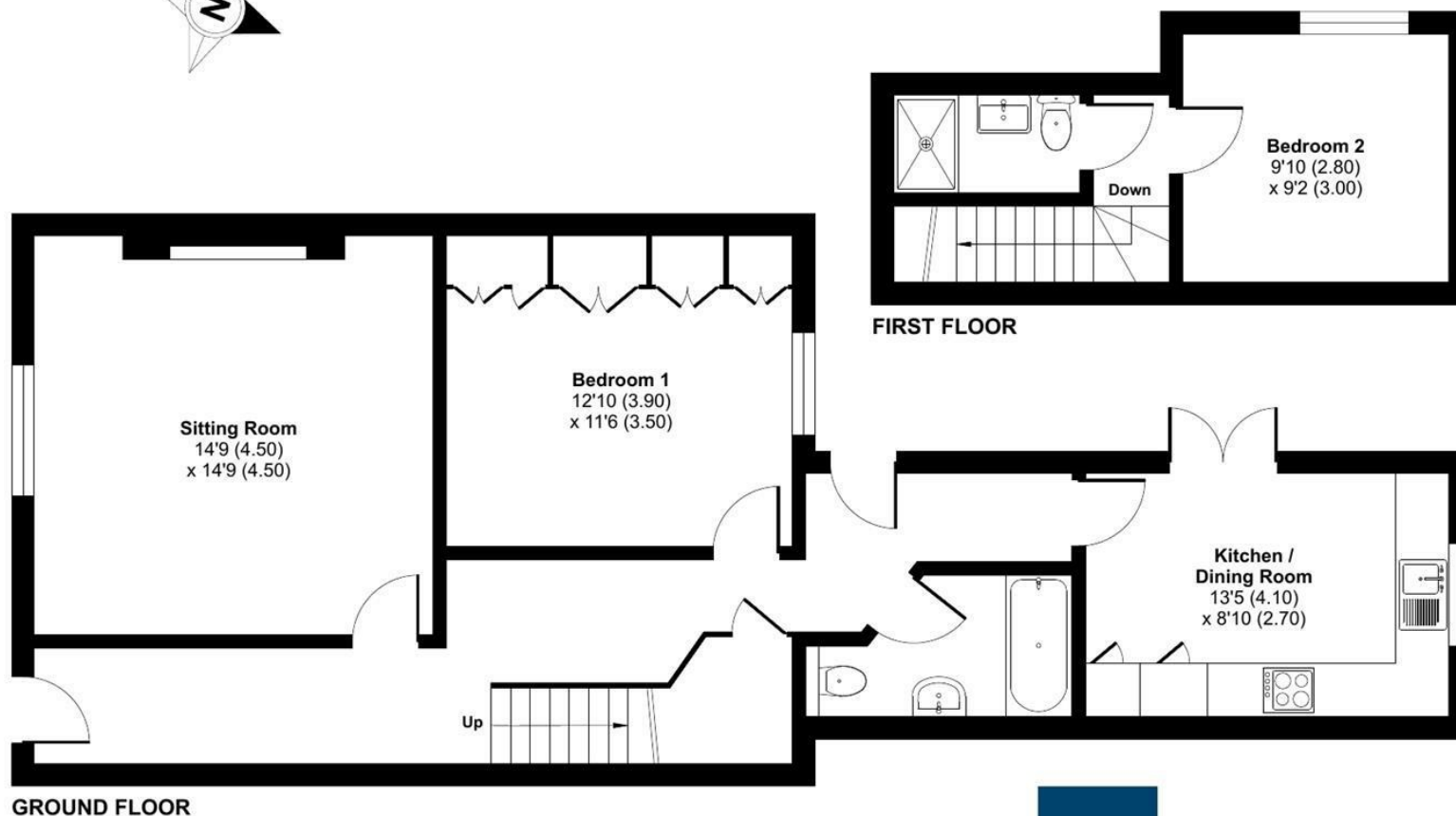
Hollis Morgan endeavour to make our sales details clear, accurate and reliable in line with the Consumer Protection from Unfair Trading Regulations 2008 but they should not be relied on as statements or representations of fact and they do not constitute any part of an offer or contract. All Hollis Morgan references to planning, tenants, boundaries, potential development, tenure etc is to be superseded by the information provided in your solicitors enquiries. It should not be assumed that this property has all the necessary Planning, Building Regulation or other consents. Any services, appliances and heating system(s) listed may not been checked or tested and you should rely on your own investigations. The seller does not make any representation or give any warranty in relation to the property and we have no authority to do so on behalf of the seller. Please note that in some instances the photographs may have been taken using a wide angle lens.



# South Parade Mansions, Clifton, Bristol, Bristol, BS8

Approximate Area = 930 sq ft / 86.3 sq m

For identification only - Not to scale



Floor plan produced in accordance with RICS Property Measurement 2nd Edition, Incorporating International Property Measurement Standards (IPMS2 Residential). © nitchecom 2024. Produced for Hollis Morgan. REF:1207408



TEL | 0117 933 9522 | 9 Waterloo Street, Clifton, Bristol BS8 4BT

[www.hollismorgan.co.uk](http://www.hollismorgan.co.uk) | [post@hollismorgan.co.uk](mailto:post@hollismorgan.co.uk)

Hollis Morgan Property Limited, registered in England, registered no 7275716  
Registered address, 5 Upper Belgrave Road, Clifton, Bristol BS8 2XQ

hollis  
morgan