

estate agents **auctioneers**

**hollis
morgan**



Flat 15, Barrington Court Winton Street, Totterdown, Bristol, BS4 2BT

£175,000

Bright purpose built Totterdown flat close to Temple Meads

- 456.5 SQ FT
- Allocated Parking
- Close Proximity to Temple Meads Train Station
- No Onward Chain
- Basic Cosmetic Improvements
- Views of Bristol

The Property

This flat is situated in Barrington Court and is spread over 456.5 SQ FT and provides fantastic views overlooking Bristol.

The property briefly comprises a good size living room, separate kitchen both at the front of the property with the bedroom and study situated at the back.

The bathroom provides ample space for bath, overhead shower, toilet and sink. It also have a convenient storage cupboard.

In addition, the property come with the additional bonus of an allocated parking space.

The property is now in need of some basic cosmetic improvements but is sold with no onward chain.

Location

Location - The property is located within the popular suburb of Totterdown with excellent local amenities and services are all within close proximity including independent retailers, pubs, bars, cafes and restaurants. Temple Meads and the City Centre are both within walking distance.

Other Information

Leasehold: 999 years from 01/07/1985

Ground rent: £20 pa

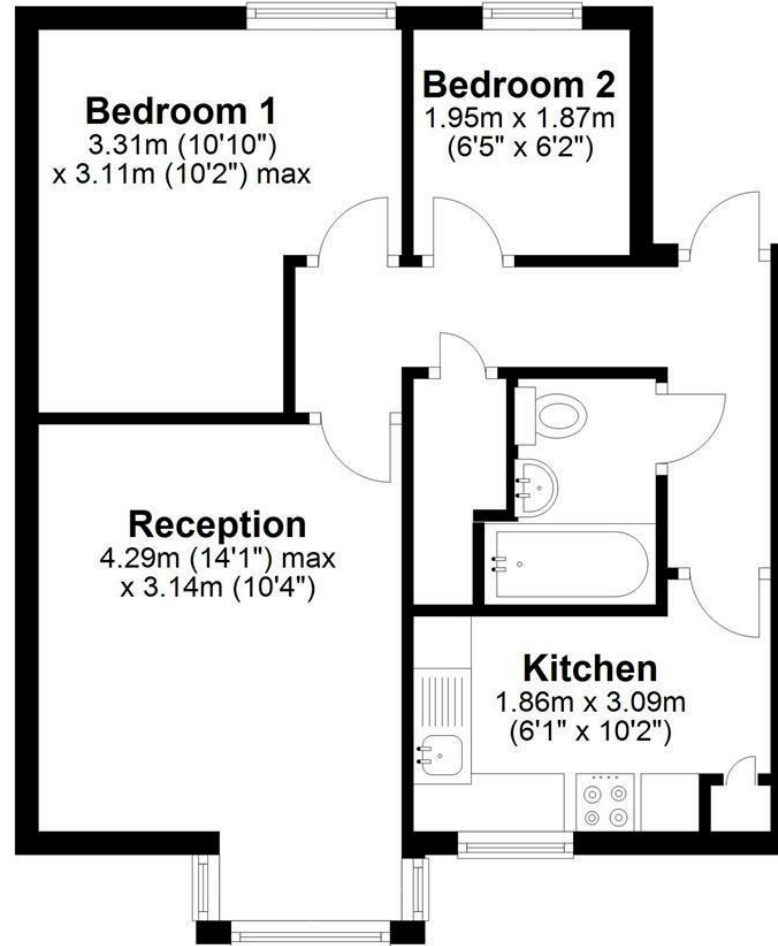
Management Fee: Circa £700 pa

Council Tax Band: B

Please Note

Hollis Morgan endeavour to make our sales details clear, accurate and reliable in line with the Consumer Protection from Unfair Trading Regulations 2008 but they should not be relied on as statements or representations of fact and they do not constitute any part of an offer or contract. All Hollis Morgan references to planning, tenants, boundaries, potential development, tenure etc is to be superseded by the information provided in your solicitors enquiries. It should not be assumed that this property has all the necessary Planning, Building Regulation or other consents. Any services, appliances and heating system(s) listed may not been checked or tested and you should rely on your own investigations. The seller does not make any representation or give any warranty in relation to the property and we have no authority to do so on behalf of the seller. Please note that in some instances the photographs may have been taken using a wide angle lens.





Total area: approx. 42.4 sq. metres (456.5 sq. feet)

Illustration for identification purposes only, measurements are approximate, not to scale.
Plan produced using PlanUp.

TEL | 0117 933 9522 | 9 Waterloo Street, Clifton, Bristol BS8 4BT

www.hollismorgan.co.uk | post@hollismorgan.co.uk

Hollis Morgan Property Limited, registered in England, registered no 7275716
Registered address, 5 Upper Belgrave Road, Clifton, Bristol BS8 2XQ

Energy Efficiency Rating		Environmental Impact (CO ₂) Rating	
Current	Potential	Current	Potential
Very energy efficient - lower running costs		Very environmentally friendly - lower CO ₂ emissions	
(92 plus) A		(92 plus) A	
(81-91) B		(81-91) B	
(69-80) C		(69-80) C	
(55-68) D		(55-68) D	
(39-54) E		(39-54) E	
(21-38) F		(21-38) F	
(1-20) G		(1-20) G	
Not energy efficient - higher running costs		Not environmentally friendly - higher CO ₂ emissions	
	71 → 82		
England & Wales	EU Directive 2002/91/EC	England & Wales	EU Directive 2002/91/EC

hollis
morgan
