

estate agents **auctioneers**



92, Railline Court, Barleyfields, Bristol, BS2 0FD

£200,000

A brilliant example of modern one bedroom apartment, with an allocated parking space - Situated in the ever popular and vibrant Old Market.

- Allocated Parking Space
- Modern Development
- Open Plan Kitchen/Living
- Bike Storage
- No Onwards Chain
- Second Floor Apartment
- Perfect For First-Time Buyers/Investors
- Short Walk to Temple Meads Station

The Property

An excellent one-bedroom flat within a modern development is positioned in a great location with a variety of amenities nearby.

The property is located on the second floor in a modern, purpose-built development. It benefits from bright and spacious rooms and an open-plan kitchen/living area, perfect for both hosting and relaxing. The kitchen features an array of wall and base units for storage, tiled splashbacks, as well as an oven and induction hob with space for a washing machine/fridge-freezer.

Accommodation in the flat offers a spacious bedroom that comfortably fits a double bed alongside some built-in wardrobes, which are perfect for storage needs. Adjacent, the hallway leads to a well-maintained three-piece bathroom, elegantly tiled and fitted with modern sanitary ware.

Furthermore, the property has two storage cupboards and secure bike storage and an allocated parking space.

This property offers a fantastic opportunity for first-time buyers or investors to acquire a well-located and sought-after flat with great transport links.

Location

With a rich history spanning four centuries, Bristol's modern day Old Market district has a unique character built from its vibrant residents and businesses alike. You will discover an eclectic blend of vintage stores and independent shops mixed with cool cafés, bars and restaurants as well as art and music venues. On its doorstep, the bustling bars, cafés, theatres and shops of the city centre are all within easy reach and the renowned Cabot Circus shopping centre is just a short walk away and Temple Meads train station only a short 3 minute walk.

Other Information

Leasehold: circa 136 years remaining

Ground rent: £307.42

Management Fee: £1474.94

Council Tax Band: B

Please Note

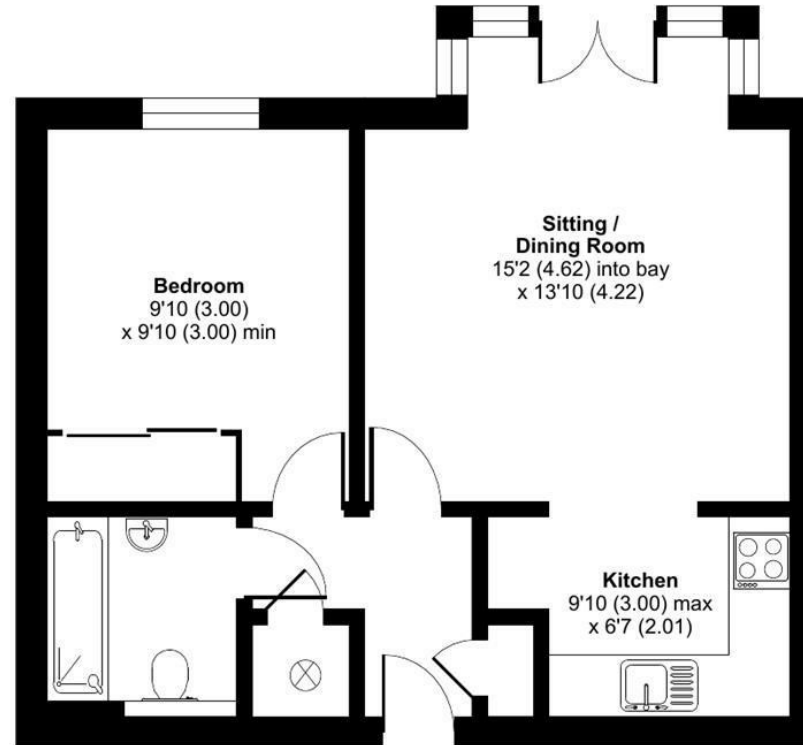
Hollis Morgan endeavour to make our sales details clear, accurate and reliable in line with the Consumer Protection from Unfair Trading Regulations 2008 but they should not be relied on as statements or representations of fact and they do not constitute any part of an offer or contract. All Hollis Morgan references to planning, tenants, boundaries, potential development, tenure etc is to be superseded by the information provided in your solicitors enquiries. It should not be assumed that this property has all the necessary Planning, Building Regulation or other consents. Any services, appliances and heating system(s) listed may not been checked or tested and you should rely on your own investigations. The seller does not make any representation or give any warranty in relation to the property and we have no authority to do so on behalf of the seller. Please note that in some instances the photographs may have been taken using a wide angle lens.



Ratcliffe Court, Barleyfields, Bristol, BS2

Approximate Area = 488 sq ft / 45.3 sq m

For identification only - Not to scale



SECOND FLOOR



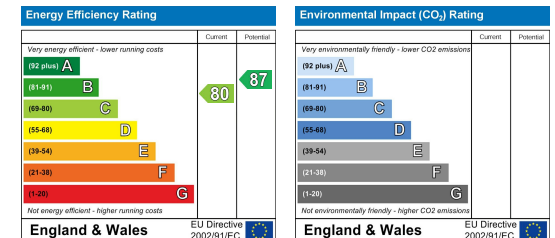
Floor plan produced in accordance with RICS Property Measurement Standards incorporating International Property Measurement Standards (IPMS2 Residential). © ncheom 2024. Produced for Hollis Morgan. REF: 1123104



TEL | **0117 933 9522** | 9 Waterloo Street, Clifton, Bristol BS8 4BT

www.hollismorgan.co.uk | post@hollismorgan.co.uk

Hollis Morgan Property Limited, registered in England, registered no 7275716
Registered address, 5 Upper Belgrave Road, Clifton, Bristol BS8 2XQ



hollis
morgan
