

estate agents **auctioneers**

**hollis
morgan**



Top Floor Flat, 24 Tyndalls Park Road, Clifton, Bristol, BS8 1PY
£425,000

A handsome top floor, three double bedroom 1100 sq ft period apartment with parking.

- Clifton Location
- Circa 1120 sq ft
- 3 Double Bedrooms
- Living room and dining room
- Gas central heating
- Parking
- Potential to improve

The Property

This spacious apartment is located on the top floor of an imposing Georgian building set back and hidden from the road behind tall mature trees. Close to Bristol university and Whiteladies Road, Tyndalls Park Road is a prime location for professionals, students or families looking for a tranquil ideal location in the heart of Clifton.

The apartment is entered via a bright communal staircase and comprises three generously proportioned bedrooms, a living room, dining area, kitchen and bathroom. The flat retains many period features with high ceilings, sash windows, dado rails, ceiling roses, cornices and cast iron fire place.

The flat interior has been designed to provide a great entertaining space with a good size kitchen facing a dining area occupying the centre of the apartment. Unusually, the flat also offers ample storage space with a large walk-in cupboard in one of the bedrooms.

Finally, a family bathroom fitted with a 3 piece suite and main fed shower over the bath serves all three bedrooms which enjoy plenty of natural light via the large Georgian windows.

Location - Clifton

Clifton and the surrounding areas, with its Victorian and Georgian architecture, are amongst the most sought after locations in the City. The area offers charm alongside excellent amenities with independent shops, boutiques, cafes, bars and restaurants to be found on both Whiteladies Road and Clifton Village including Clifton Down shopping Centre. The Downs offers four hundred acres of green public space whilst Brunel's Clifton Suspension Bridge provides a gateway to the Ashton Court Estate with its woodlands, mountain bike trails and walks whilst there is excellent access to the exciting Harbourside district, the City Centre and Temple Meads.

Other Information

Leasehold: circa 966 years remaining
Management Fee: £130PCM

Council Tax Band: D

Please Note

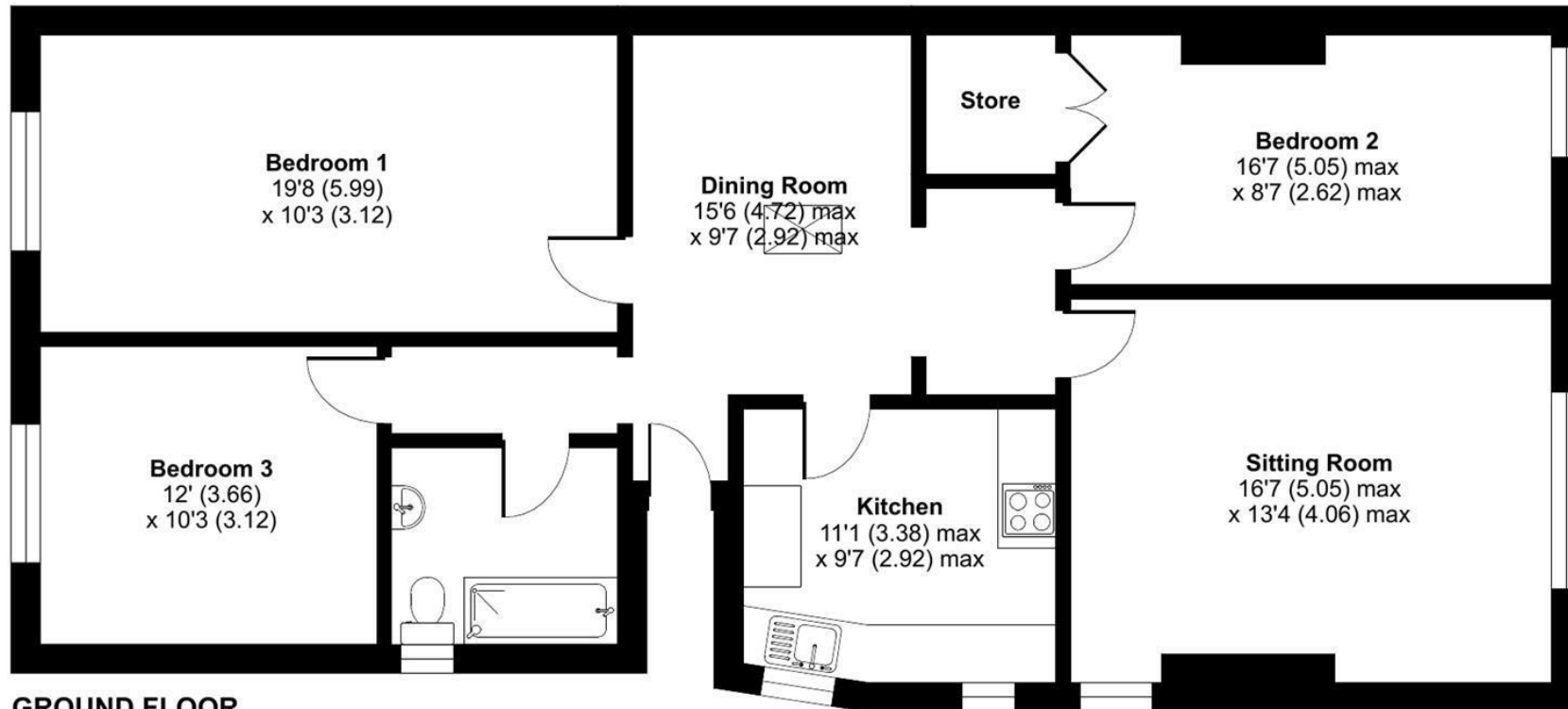
Hollis Morgan endeavour to make our sales details clear, accurate and reliable in line with the Consumer Protection from Unfair Trading Regulations 2008 but they should not be relied on as statements or representations of fact and they do not constitute any part of an offer or contract. All Hollis Morgan references to planning, tenants, boundaries, potential development, tenure etc is to be superseded by the information provided in your solicitors enquiries. It should not be assumed that this property has all the necessary Planning, Building Regulation or other consents. Any services, appliances and heating system(s) listed may not been checked or tested and you should rely on your own investigations. The seller does not make any representation or give any warranty in relation to the property and we have no authority to do so on behalf of the seller. Please note that in some instances the photographs may have been taken using a wide angle lens.



Tyndalls Park Road, Bristol, BS8

Approximate Area = 1119 sq ft / 103.9 sq m

For identification only - Not to scale



GROUND FLOOR



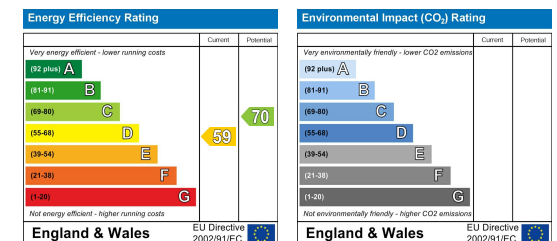
Floor plan produced in accordance with RICS Property Measurement Standards incorporating International Property Measurement Standards (IPMS2 Residential). © nichecom 2024. Produced for Hollis Morgan. REF: 1078954



TEL | 0117 933 9522 | 9 Waterloo Street, Clifton, Bristol BS8 4BT

www.hollismorgan.co.uk | post@hollismorgan.co.uk

Hollis Morgan Property Limited, registered in England, registered no 7275716
Registered address, 5 Upper Belgrave Road, Clifton, Bristol BS8 2XQ



hollis
morgan