

local
properties

buy • sell • let



E23 Saxton The Avenue Leeds, LS9 8FP

£185,000
Leasehold

**** STUNNING 8th FLOOR APARTMENT - TWO DOUBLE BEDROOMS - OPEN PLAN LIVING - VIEWS OVER CITY - NO CHAIN **** The property has floor to ceiling double glazed windows and electric heating and briefly comprises: entrance hall, open plan lounge with dining area with access to covered balcony and modern fitted kitchen, two double bedrooms with Juliet balconies, bathroom. There are well maintained communal gardens to the rear, a residents gym and secure parking is available to rent. Within walking distance of the City Centre, the property is ideally placed for access to all amenities including shops, bars and restaurants as well as the motorway network. A well presented and spacious property, viewing is recommended.



• STUNNING 8TH FLOOR APARTMENT • TWO DOUBLE BEDROOMS WITH JULIET
BALCONIES • OPEN PLAN LIVING/KITCHEN AREA

ENTRANCE HALL

With laundry cupboard having plumbing for automatic washing machine and further spacious cupboard.

LOUNGE & DINING AREA

17'5" x 14'0"

Floor to ceiling windows leading to covered balcony offering extensive views over city.

KITCHEN AREA

With base units in matt black with Maple wall cupboards. Stainless steel sink unit with Kettle tap. Electric oven, halogen hob and extractor hood. Integrated dishwasher.

BEDROOM ONE

11'5" x 9'3"

Floor to ceiling window with Juliet balcony and far reaching views.

BEDROOM TWO

11'5" x 9'3"

Floor to ceiling window with Juliet balcony and far reaching views.

BATHROOM

Part tiled with three piece suite comprising: bath with

shower over, wall mounted sink, low flush wc. Wall mounted mirrored storage cupboard. Heated towel rail.

EXTERIOR

Well maintained communal gardens to the rear of the property with barbecue area. Secure parking is available to rent at a cost of £65 per calendar month per space. Residents gym within the block.

NOTE

This property is available under Shared Ownership with £185,000 representing the cost of 100% share. The current vendor owns 41% of the property and rents the remaining 59% from Urban Splash at a cost of £254.35 per calendar month. It is possible to purchase 41% of the property (for first time buyers only who must satisfy Urban Splash's criteria) or the full 100%.

We understand from the vendor the following charges apply:

Ground rent - £140 per annum

Service Charge - £691.54 per quarter/£2766.16 per annum

- which includes: buildings insurance, external window cleaning, cleaning of communal areas, maintenance of garden areas, maintenance of car park, CCTV, resident's



- INTEGRATED KITCHEN APPLIANCES • BATHROOM WITH SHOWER • RESIDENTS GYM & COMMUNAL GARDENS

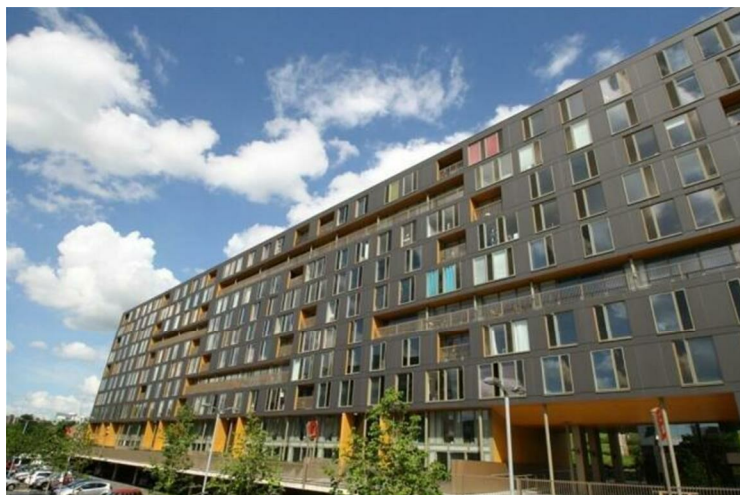
gym.

We also understand from the vendor the buildings is ESW1 compliant and that some household items are available by separate negotiation.



• PARKING SPACES AVAILABLE TO RENT • CITY CENTRE LOCATION • EPC - C • NO CHAIN






Additional Information

Local Authority - Leeds
Council Tax - Band C
Viewings - By Appointment Only

Floor Area - 667.37 sq ft
Tenure - Leasehold



Energy Efficiency Rating		
	Current	Potential
<i>Very energy efficient - lower running costs</i>		
(92 plus) A		
(81-91) B		
(69-80) C	72	73
(55-68) D		
(39-54) E		
(21-38) F		
(1-20) G		
<i>Not energy efficient - higher running costs</i>		
England & Wales	EU Directive 2002/91/EC 	

Agents Note: Whilst every care has been taken to prepare these particulars, they are for guidance purposes only. All measurements are approximate and are for general guidance purposes only and whilst every care has been taken to ensure their accuracy, they should not be relied upon and potential buyers/tenants are advised to recheck the measurements

Birstall Sales
 Midland Bank Chambers
 Smithies Lane
 Birstall
 Batley
 West Yorkshire
 WF17 9EB

01924 474456
 info@localproperties.net
<http://www.localproperties.net/>

