

abbotFox



City Centre, NR1
Guide Price £160,000

“

We are a team of genuine individuals who hold a deep passion for both property and marketing. Collectively, we bring over 70 years of experience in the property market of Norfolk and Suffolk. Our affection for both counties runs deep, and we are enthusiastic about sharing our passion with you.

Colin McKenzie | **Branch Partner**







THE DETAIL_____

abbotFox presents this well positioned apartment located within the popular Emms Court development.

Offering bright and well proportioned accommodation, this home is ideal for a City base or investment opportunity. The property benefits from a welcoming entrance hall, generous living space with room for both relaxing and dining, and a fitted kitchen designed to make the most of the available space.

The bedrooms are well sized and serviced by a clean and modern bathroom, while the overall layout has been thoughtfully designed for comfortable, low maintenance living. Further benefits include allocated parking and the convenience of being set within a well maintained development.

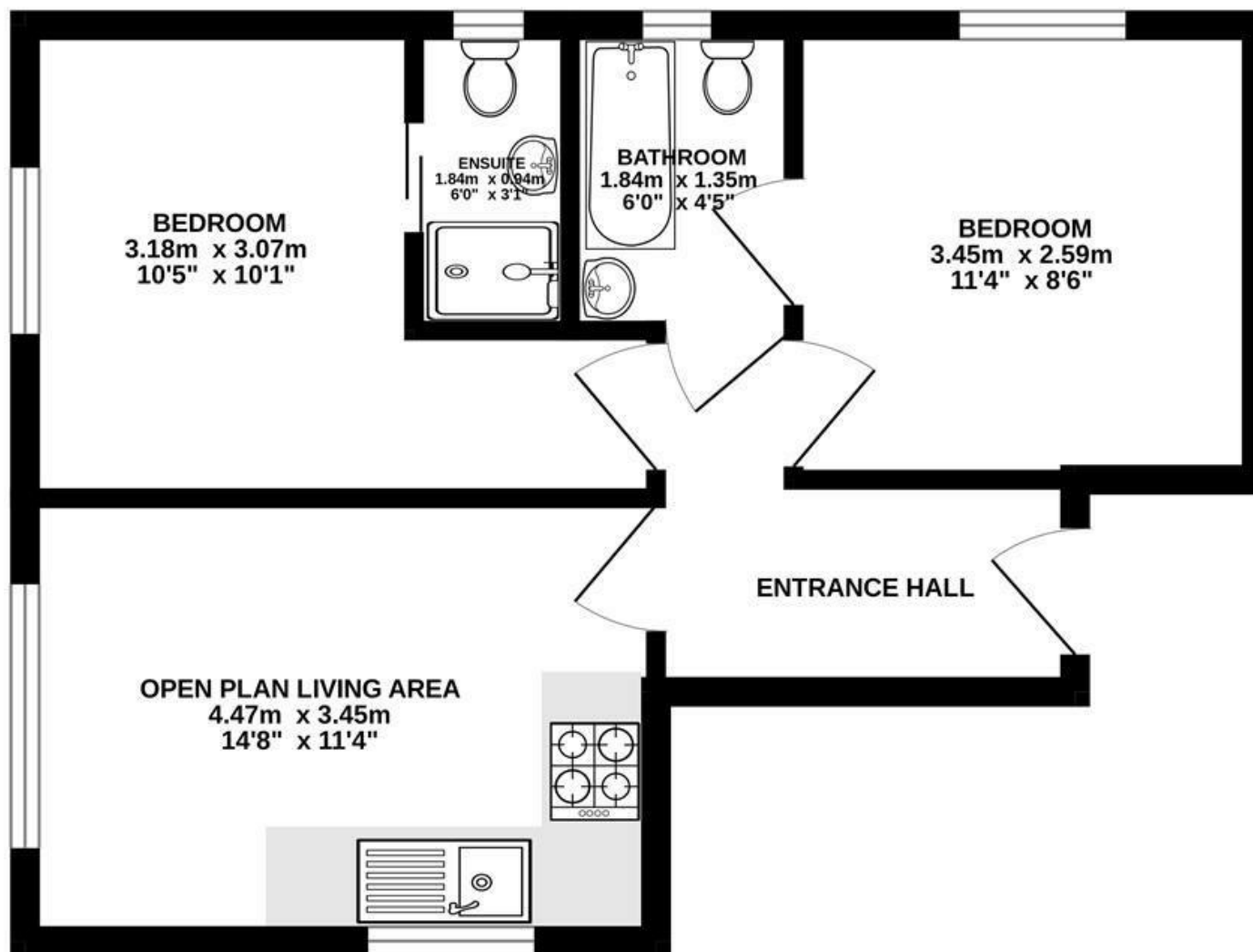
Situated within easy reach of local amenities and with good access to the city and transport links, this property represents an excellent opportunity for those seeking a convenient and practical home or a strong addition to a rental portfolio. An internal viewing comes highly recommended.

Guide price £160,000 - £170,000



THE HIGHLIGHTS____

- Stylish apartment
- City Centre location
- Two bedrooms
- Open plan living
- Ideal investment opportunity
- Viewing advised



Let's talk

01603 660000

sales@abbotfox.co.uk

@abbotfox

EPC RATING -

Disclaimer – In accordance with the Property Misdescriptions Act, the company abbotFox gives notice that all descriptions, references to condition, necessary permissions for use and other details are given in good faith and believed to be correct, but any purchaser should not rely on them as statements of fact, and must satisfy themselves by inspection or other means, as to their accuracy.