

abbotFox



Hemming Way, Norwich
£1,900

“

We are a team of genuine individuals who hold a deep passion for both property and marketing. Collectively, we bring over 70 years of experience in the property market of Norfolk and Suffolk. Our affection for both counties runs deep, and we are enthusiastic about sharing our passion with you.

Colin McKenzie | **Branch Partner**







THE DETAIL_____

abbotFox presents this modern five bedroomed, semi-detached house. The ground floor; offering a spacious kitchen/diner and cloakroom, first floor; a family bathroom, master bedroom/lounge, and two additional double bedrooms, which come furnished to a high standard. The second offers two double en-suite rooms again fully furnished.

To the outside the property offers an enclosed rear garden with a storage facility, the property also benefits from have a car port.

The NR3 area of Norwich is served by a range of local amenities and regular bus services into the city centre. Norwich train station is approximately a mile away with daily services to Cambridge and London and Mousehold Heath is close by which is popular with walkers and runners alike.



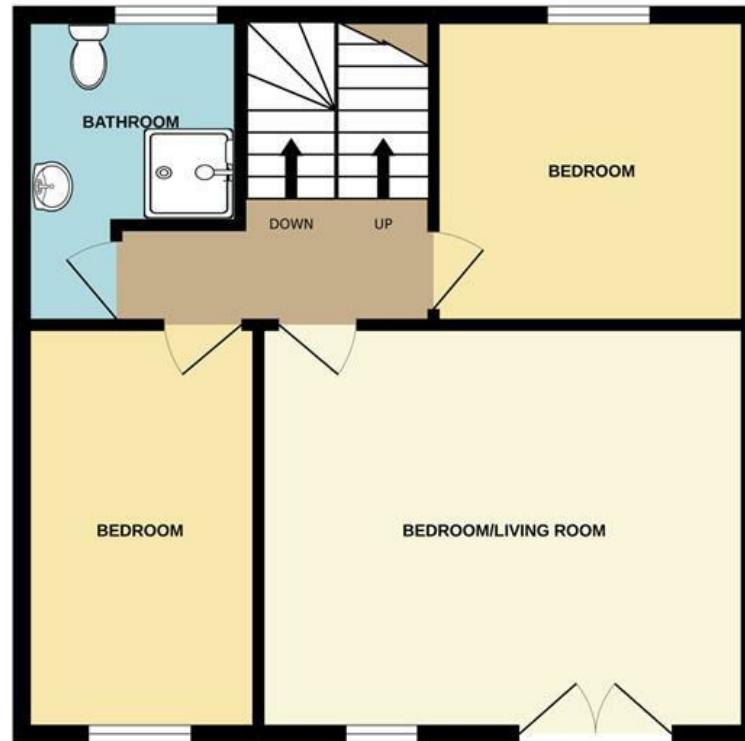




THE HIGHLIGHTS__

- Available January
- Fully furnished
- Car port
- 4/5 double bedrooms
- Two en-suites
- Enclosed rear gardens

1ST FLOOR



2ND FLOOR



Whilst every attempt has been made to ensure the accuracy of the floorplan contained here, measurements of doors, windows, rooms and any other items are approximate and no responsibility is taken for any error, omission or mis-statement. This plan is for illustrative purposes only and should be used as such by any prospective purchaser. The services, systems and appliances shown have not been tested and no guarantee as to their operability or efficiency can be given.
Made with Metropix ©2022

Let's talk

01603 660000

sales@abbotfox.co.uk

@abbotfox

EPC RATING -

Disclaimer – In accordance with the Property Misdescriptions Act, the company abbotFox gives notice that all descriptions, references to condition, necessary permissions for use and other details are given in good faith and believed to be correct, but any purchaser should not rely on them as statements of fact, and must satisfy themselves by inspection or other means, as to their accuracy.