

abbotFox





Norwich, NR3  
Guide £160,000

“

We are a team of genuine individuals who hold a deep passion for both property and marketing. Collectively, we bring over 70 years of experience in the property market of Norfolk and Suffolk. Our affection for both counties runs deep, and we are enthusiastic about sharing our passion with you.

Colin McKenzie | **Branch Partner**













## THE DETAIL\_\_\_\_\_

abbotFox presents this spacious first floor apartment, an ideal opportunity to acquire a two bedroom home complete with its own private garden. Situated within a popular residential location, this property offers an appealing blend of comfort, convenience and outdoor space and is ideally situated within easy reach of Norwich City Centre, Mousehold Heath and a variety of local amenities.

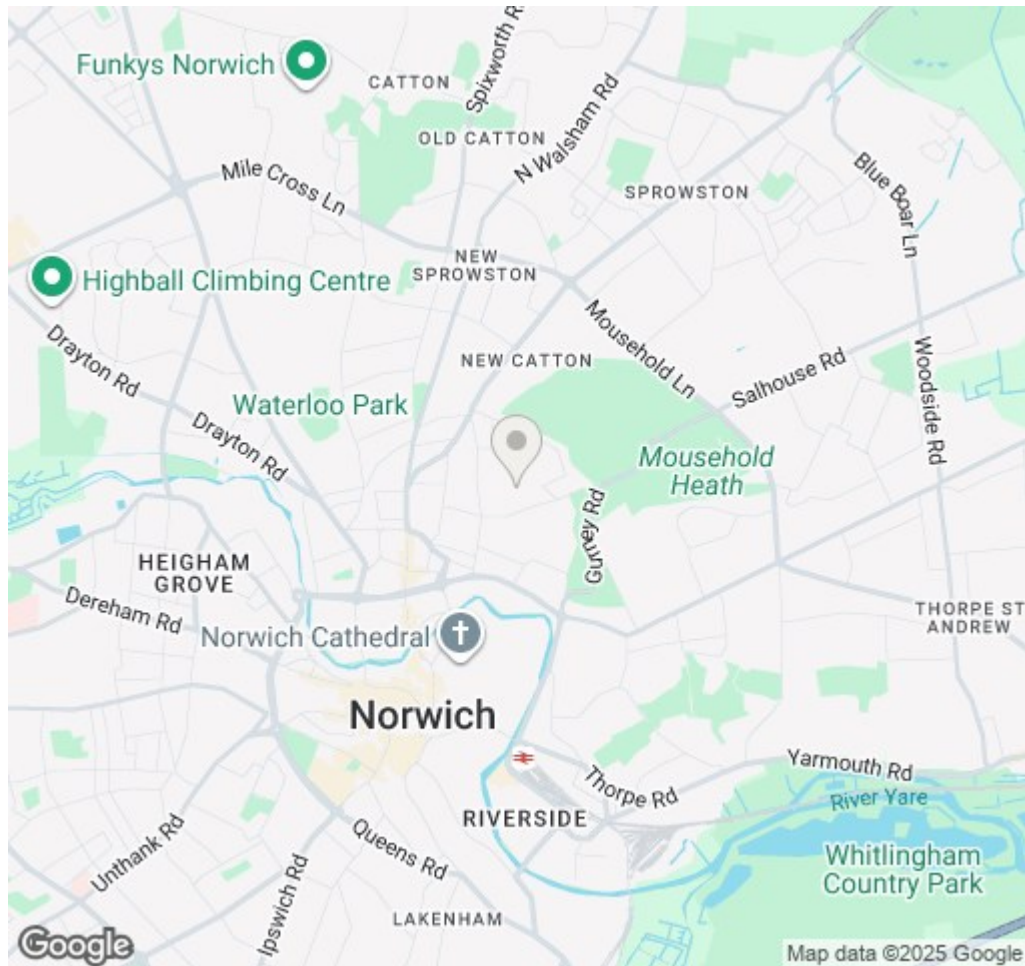
The accommodation is neatly arranged and comprises; entrance hall, lounge, kitchen diner, two double bedrooms and a family bathroom. Outside, this home truly stands apart, with a private garden offering a secluded retreat perfect for outdoor dining, gardening, or simply enjoying the warmer months.

With a host of local amenities, excellent transport links and green spaces close by, this exceptional apartment represents an ideal opportunity for first-time buyers, investors, or those seeking a well-located city home. An internal viewing is highly recommended.

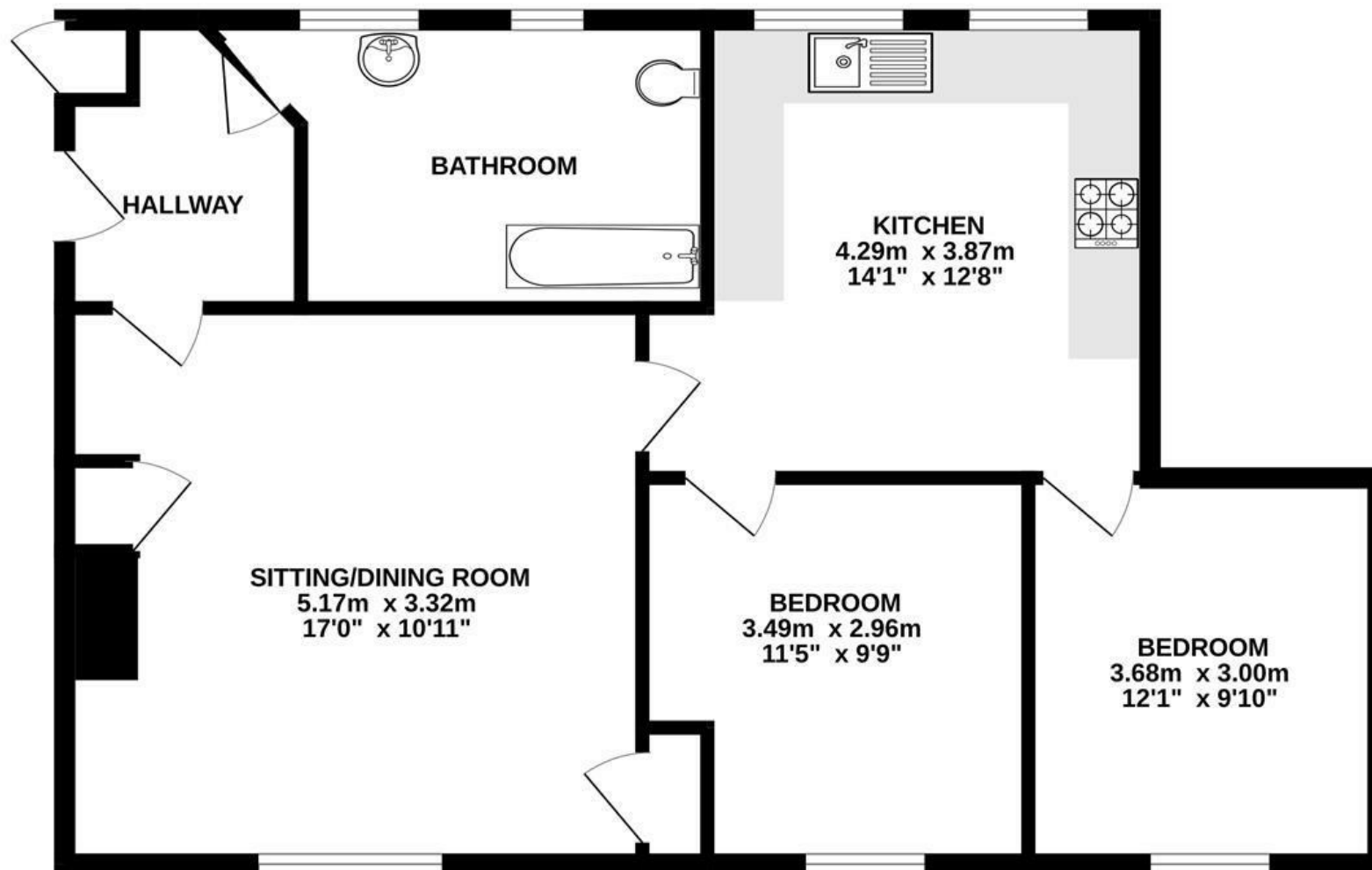




## THE HIGHLIGHTS\_\_\_\_



- First floor apartment
- Two double bedrooms
- Private gardens
- Easy access to local amenities
- Ideal first time buy
- Viewing advised



*Let's talk*

01603 660000

[sales@abbotfox.co.uk](mailto:sales@abbotfox.co.uk)

@abbotfox

EPC RATING -

Disclaimer – In accordance with the Property Misdescriptions Act, the company abbotFox gives notice that all descriptions, references to condition, necessary permissions for use and other details are given in good faith and believed to be correct, but any purchaser should not rely on them as statements of fact, and must satisfy themselves by inspection or other means, as to their accuracy.