

abbotFox





Norwich, NR1  
*£1,150 PCM*

“

We are a team of genuine individuals who hold a deep passion for both property and marketing. Collectively, we bring over 70 years of experience in the property market of Norfolk and Suffolk. Our affection for both counties runs deep, and we are enthusiastic about sharing our passion with you.

Colin McKenzie | **Branch Partner**









## THE DETAIL\_\_\_\_\_

AbbotFox is delighted to present this stylish, purpose-built apartment, perfectly positioned within a short walk of Norwich City Centre. Offering a superb combination of convenience and modern living, this property is ideal for professionals looking for a comfortable and contemporary home with excellent access to a range of amenities, shops, restaurants, and transport links.

This impressive apartment boasts two well-proportioned bedrooms, including a spacious principal bedroom with a private en-suite bathroom, providing both style and privacy. The second bedroom is equally comfortable and can easily serve as a guest room, home office, or study. A separate shower room serves the rest of the apartment, ensuring practicality for residents and visitors alike.

The generous living accommodation includes a bright, open-plan living and dining area, offering plenty of space for relaxing, entertaining, or working from home. The kitchen is thoughtfully designed with modern fixtures and fittings, making it ideal for cooking and socialising. Large windows throughout the property allow natural light to flood the space, creating a welcoming and airy atmosphere.

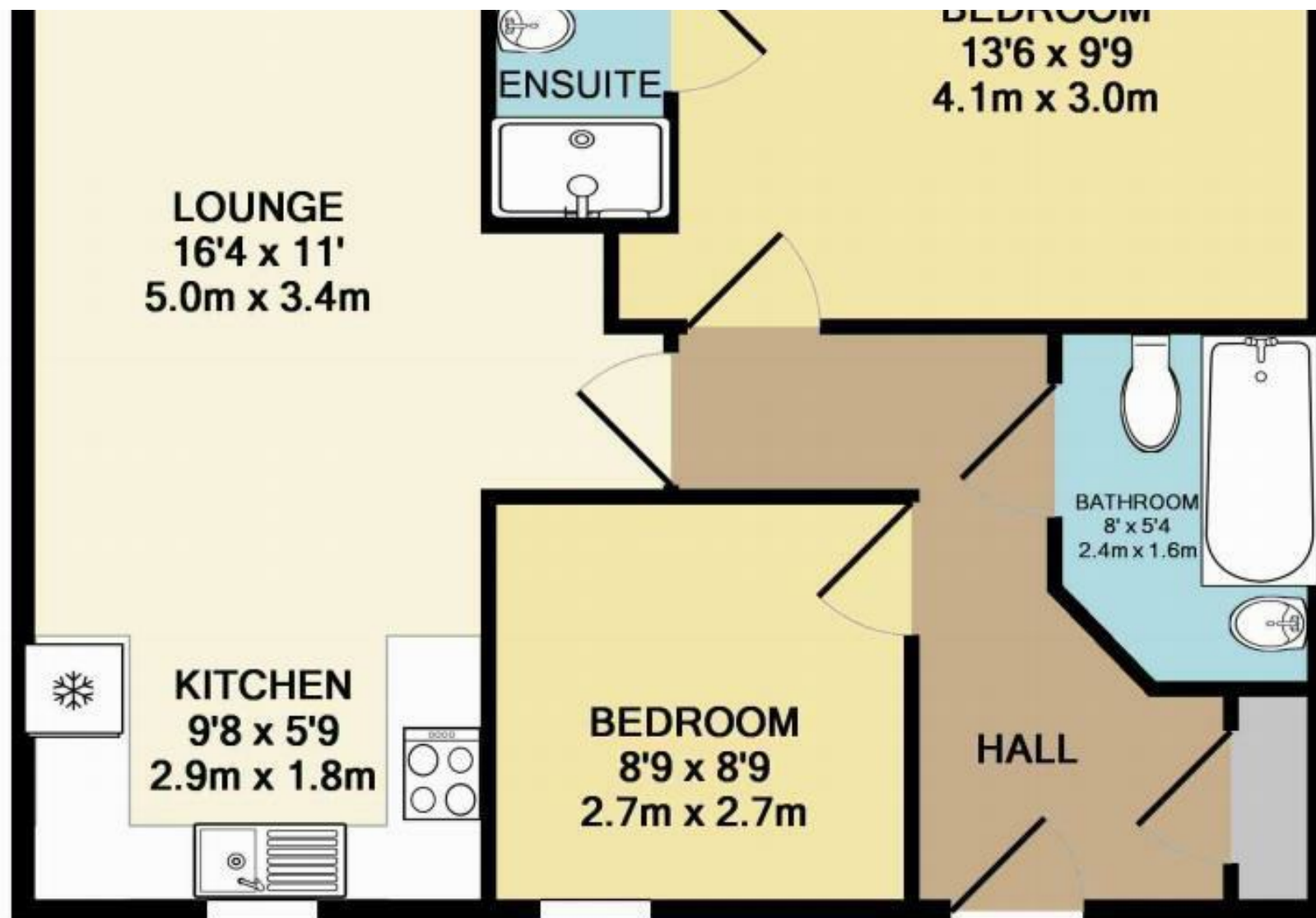
Additional benefits include allocated parking, providing convenience and peace of mind in this central location. This apartment combines style, practicality, and an unbeatable location, making it a rare opportunity for those seeking contemporary city living.

An internal viewing is highly recommended to fully appreciate the space, finish, and lifestyle this property has to offer.



## THE HIGHLIGHTS\_\_\_\_

- Purpose built apartment
- Two bedrooms, en-suite to master
- Allocated parking
- Close to local amenities
- Walking distance to City Centre
- Viewing advised



Whilst every attempt has been made to ensure the accuracy of the floor plan contained here, measurements of doors, windows, rooms and any other items are approximate and no responsibility is taken for any error,

*Let's talk*

01603 660000

[sales@abbotfox.co.uk](mailto:sales@abbotfox.co.uk)

@abbotfox

EPC RATING -

Disclaimer – In accordance with the Property Misdescriptions Act, the company abbotFox gives notice that all descriptions, references to condition, necessary permissions for use and other details are given in good faith and believed to be correct, but any purchaser should not rely on them as statements of fact, and must satisfy themselves by inspection or other means, as to their accuracy.