

abbotFox



Norwich, NR6

Guide Price £275,000

“

We are a team of genuine individuals who hold a deep passion for both property and marketing. Collectively, we bring over 70 years of experience in the property market of Norfolk and Suffolk. Our affection for both counties runs deep, and we are enthusiastic about sharing our passion with you.

Colin McKenzie | **Branch Partner**







THE DETAIL _____

abbotFox presents this deceptively spacious, extended three bedroom semi-detached bungalow. Offering a flexible layout, which lends itself for multi-generational living.

Set within a residential no-through road, within easy reach of a wealth of amenities, which affords a high degree of convenience. This home comprises; entrance hall, lounge diner, kitchen, additional reception room, modern re-fitted shower room and wc, along with a further kitchen living space, bedroom and en-suite shower room.

Properties of this space and setting are rarely available with an internal viewing highly recommended.

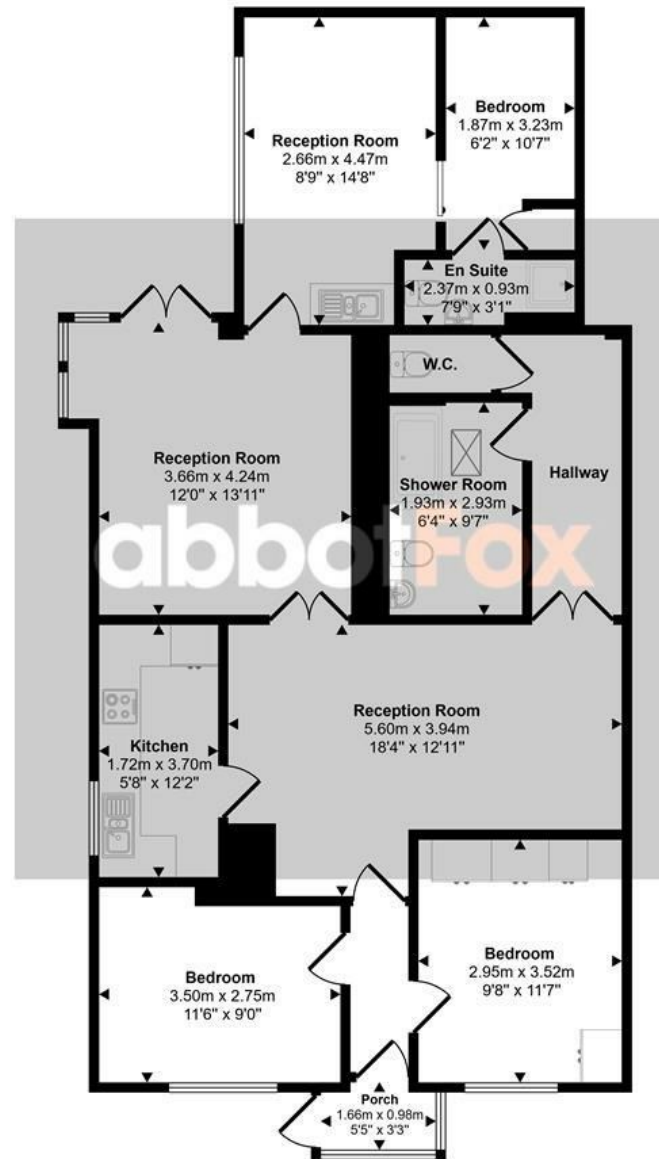
Guide price £275,000- £300,000





THE HIGHLIGHTS _____

- Extended semi-detached bungalow
- Three bedrooms
- Annexe potential
- Close to local amenities
- Internal viewing advised
- Guide price £300,000 - £325,000



Floorplan

Let's talk

01603 660000

sales@abbotfox.co.uk

@abbotfox

EPC RATING -

Disclaimer – In accordance with the Property Misdescriptions Act, the company abbotFox gives notice that all descriptions, references to condition, necessary permissions for use and other details are given in good faith and believed to be correct, but any purchaser should not rely on them as statements of fact, and must satisfy themselves by inspection or other means, as to their accuracy.