

abbotFox





City Centre, Norwich, NR1  
*£1,200 PCM*

“

We are a team of genuine individuals who hold a deep passion for both property and marketing. Collectively, we bring over 70 years of experience in the property market of Norfolk and Suffolk. Our affection for both counties runs deep, and we are enthusiastic about sharing our passion with you.

Colin McKenzie | **Branch Partner**











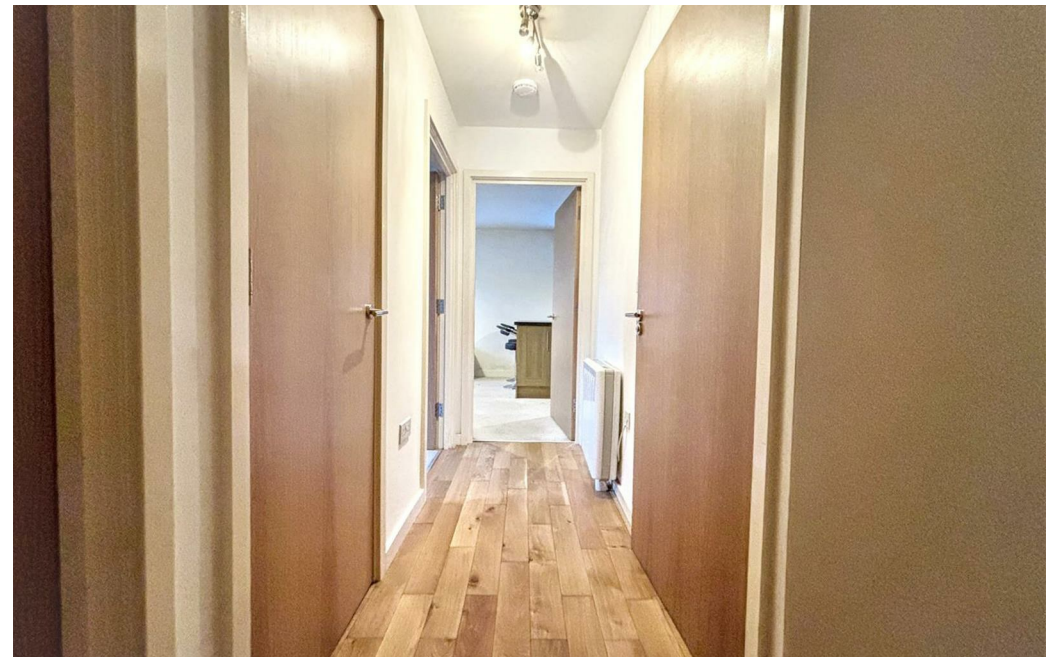


## THE DETAIL\_\_\_\_\_

abbotFox presents this modern two-bedroom apartment offers an ideal home for those seeking convenience and contemporary living in a highly desirable location. The property boasts a secure phone entry system, a welcoming entrance hall, and a bright open-plan lounge and kitchen with a breakfast bar – perfect for entertaining or relaxing after a day in the city. Both bedrooms include fitted wardrobes, and the stylish bathroom completes the accommodation.

Outside, tenants benefit from two allocated parking spaces and a communal sheltered bicycle park, making commuting and day-to-day travel straightforward.

Located in the popular Thorpe Hamlet area, the apartment offers excellent access to Norwich train station, the A47 Southern Bypass, and is within easy walking distance of Norwich City Centre, with its shops, restaurants, and cultural amenities. The nearby Mousehold Heath provides a scenic escape for walks, cycling, or outdoor leisure. This property is perfectly positioned for professionals, couples, or small families looking for convenient, comfortable, and well-connected city living.



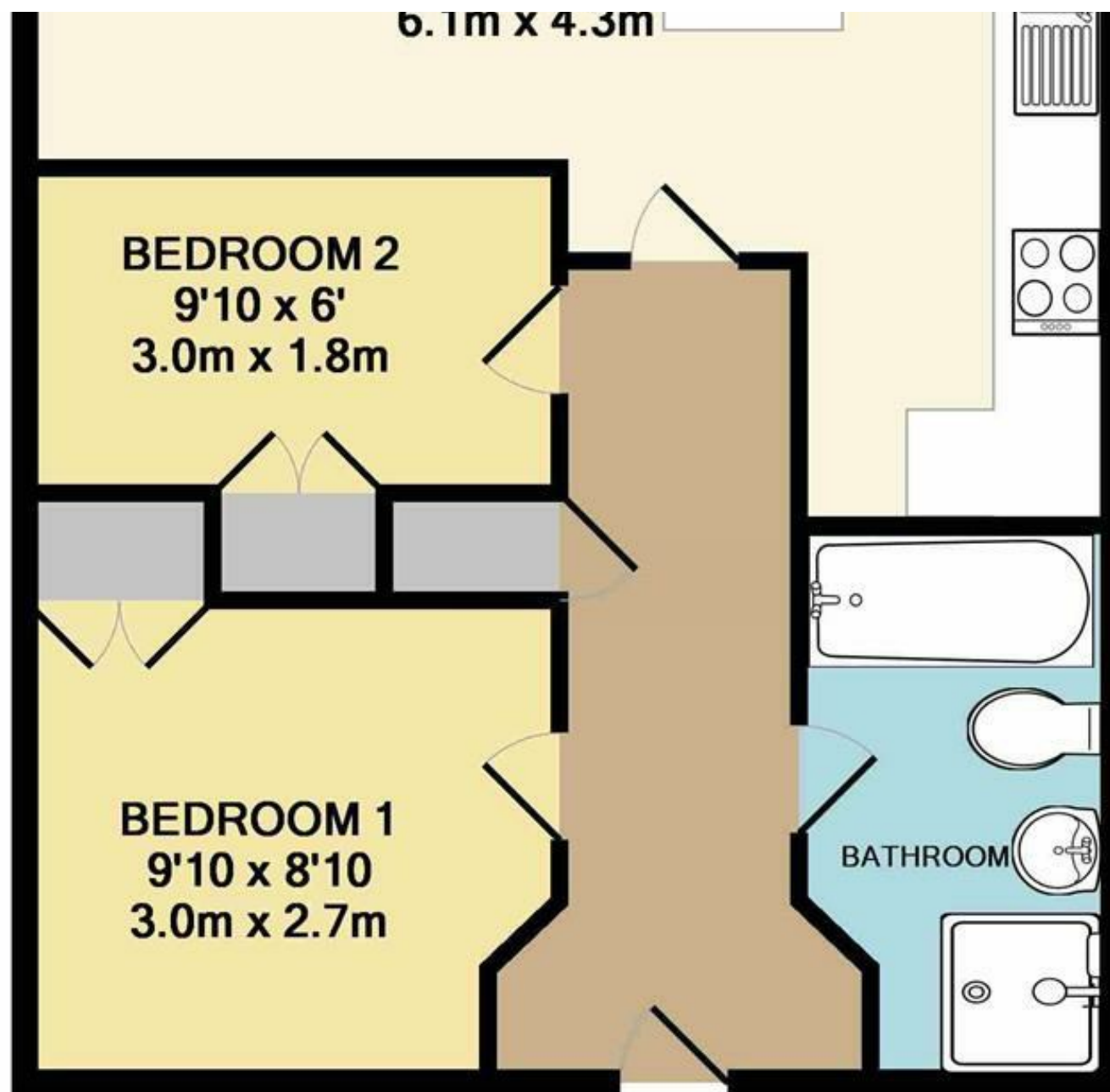






## THE HIGHLIGHTS\_\_\_\_

- Beautiful city centre apartment
- Furnished/Unfurnished
- Lounge dining kitchen room with integral appliances
- Modern family bathroom
- Spacious entrance hall
- Secure entry system
- Allocated parking for two cars
- Two bedrooms



*Let's talk*

01603 660000

[sales@abbotfox.co.uk](mailto:sales@abbotfox.co.uk)

@abbotfox

EPC RATING - C

Disclaimer – In accordance with the Property Misdescriptions Act, the company abbotFox gives notice that all descriptions, references to condition, necessary permissions for use and other details are given in good faith and believed to be correct, but any purchaser should not rely on them as statements of fact, and must satisfy themselves by inspection or other means, as to their accuracy.