

abbotFox

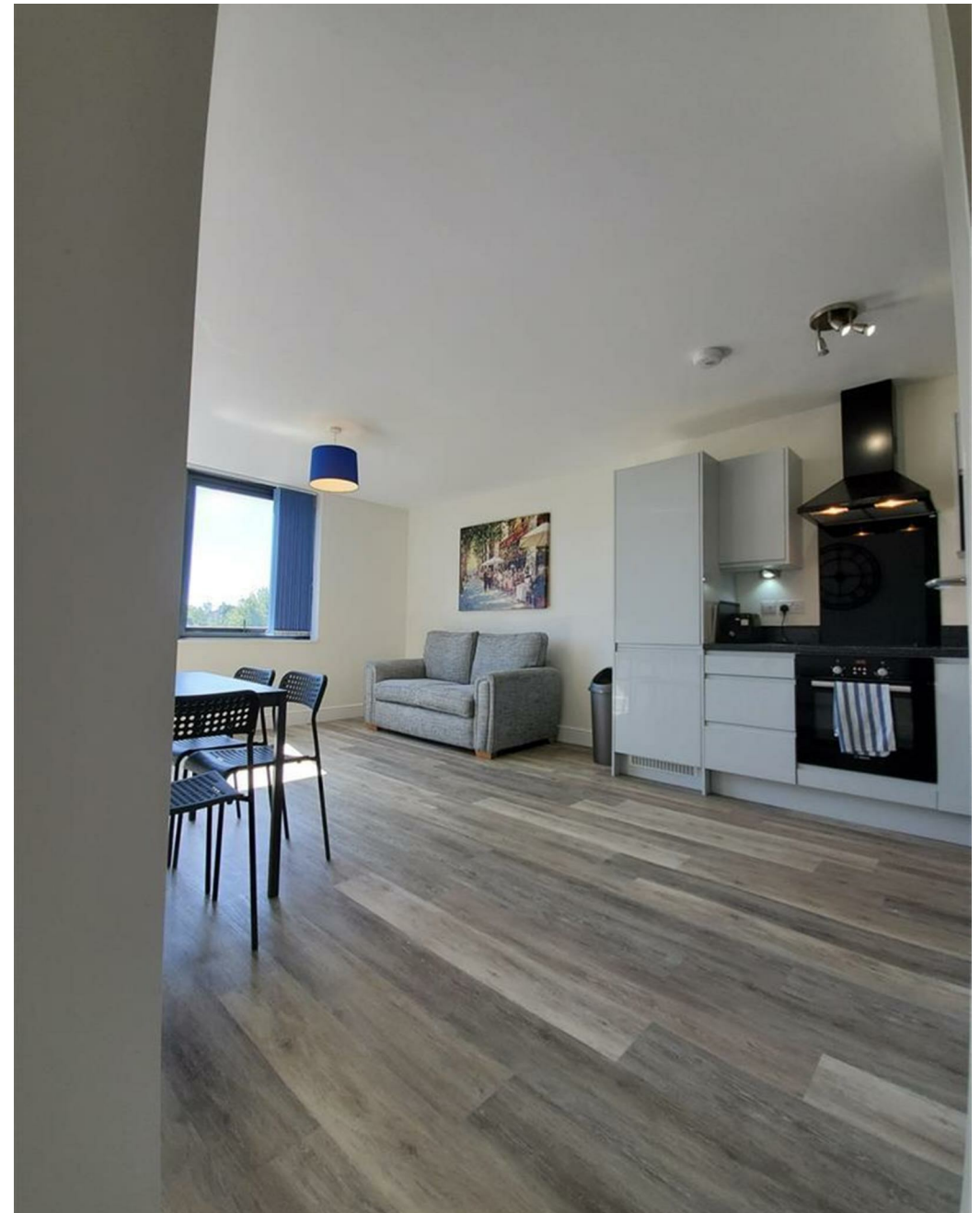


Prince Of Wales Road, Norwich  
*£1,350*

“

We are a team of genuine individuals who hold a deep passion for both property and marketing. Collectively, we bring over 70 years of experience in the property market of Norfolk and Suffolk. Our affection for both counties runs deep, and we are enthusiastic about sharing our passion with you.

Colin McKenzie | **Branch Partner**









# THE DETAIL\_\_\_\_\_

AbbotFox presents

Two-Bedroom Apartment – Available Now!

City Centre Location • Parking Included • Walking Distance to  
Train Station

EPC Rating: D • Council Tax Band: B

This stylish two-bedroom apartment offers contemporary and versatile living in the heart of Norwich City Centre.

The property comprises a well-designed open-plan lounge and kitchen with integrated white goods, two double bedrooms, and a modern bathroom. Secure parking is included within the rental price, providing convenient city living without the hassle of finding a space.

Perfectly positioned on one of the main routes into and out of the city, the apartment is just a short walk from Norwich Train Station. Residents can enjoy Norwich's vibrant cultural scene, including trendy restaurants, bars, picturesque parks, and events such as The Norfolk and Norwich Festival.

With its central location, modern design, and included parking, this apartment is ideal for anyone looking for a comfortable and convenient city centre home.



## THE HIGHLIGHTS\_\_\_\_

- Two Bedroom
- Parking
- City Centre
- Furnished
- Available October

*Let's talk*

01603 660000

[sales@abbotfox.co.uk](mailto:sales@abbotfox.co.uk)

[@abbotfox](#)

EPC RATING -

Disclaimer – In accordance with the Property Misdescriptions Act, the company abbotFox gives notice that all descriptions, references to condition, necessary permissions for use and other details are given in good faith and believed to be correct, but any purchaser should not rely on them as statements of fact, and must satisfy themselves by inspection or other means, as to their accuracy.