

abbotFox





Willowcroft Way, Cringleford, Norwich  
*£1,550 PCM*

“

We are a team of genuine individuals who hold a deep passion for both property and marketing. Collectively, we bring over 70 years of experience in the property market of Norfolk and Suffolk. Our affection for both counties runs deep, and we are enthusiastic about sharing our passion with you.

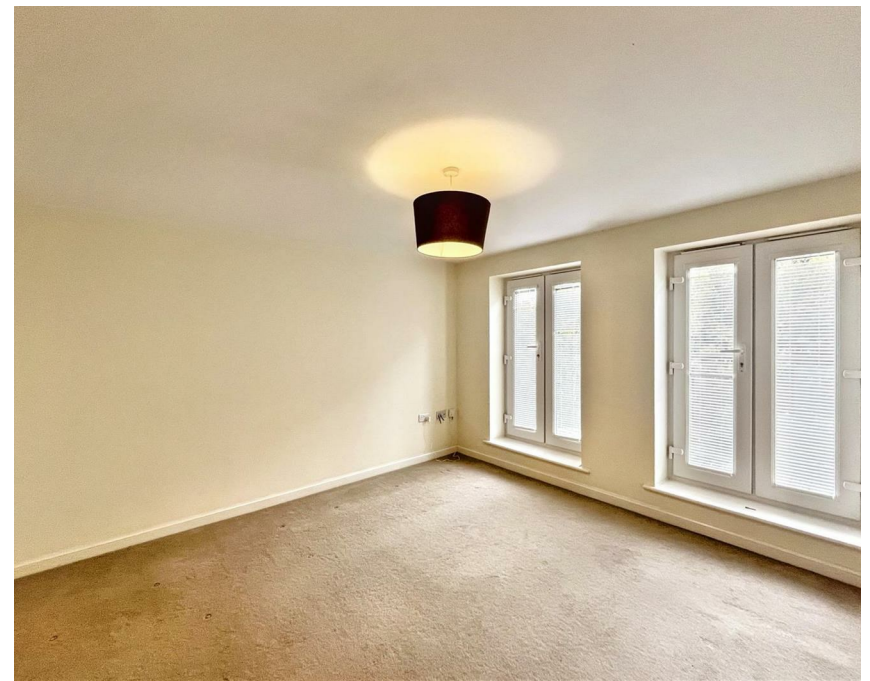
Colin McKenzie | **Branch Partner**













## THE DETAIL\_\_\_\_\_

abbotFox presents this four bedroom townhouse nestled in the charming area of Cringleford, Norwich, this delightful townhouse on Willowcroft Way offers a perfect blend of comfort and modern living. With four spacious bedrooms, this property is ideal for families or those seeking extra space. The well-designed layout includes a welcoming reception room, perfect for entertaining guests or enjoying quiet evenings at home.

The house features two bathrooms, ensuring convenience for all residents. The contemporary design and thoughtful finishes throughout create a warm and inviting atmosphere. The property also benefits from parking for one vehicle, adding to the ease of living in this desirable location.

Situated near Round House Park, residents can enjoy the beauty of nature and outdoor activities right on their doorstep. Cringleford is known for its friendly community and excellent local amenities, making it a wonderful place to call home.

This rental opportunity is not to be missed, offering a comfortable and stylish living space in a sought-after area. Whether you are looking to settle down or seeking a new adventure, this townhouse is ready to welcome you.











## THE HIGHLIGHTS\_\_\_\_

- Modern Townhouse
- Popular Location
- Four Bedrooms
- En Suite
- Lounge
- Modern Kitchen
- Garage
- Parking
- Garden

*Let's talk*

01603 660000

[sales@abbotfox.co.uk](mailto:sales@abbotfox.co.uk)

[@abbotfox](#)

EPC RATING -

Disclaimer – In accordance with the Property Misdescriptions Act, the company abbotFox gives notice that all descriptions, references to condition, necessary permissions for use and other details are given in good faith and believed to be correct, but any purchaser should not rely on them as statements of fact, and must satisfy themselves by inspection or other means, as to their accuracy.