

abbotFox

Imperial House, 61-65 Rose Lane, Norwich

P City centre
St Stephens
St Andrews
Castle Mall
170

Norwich, City Centre
£850 PCM

“

We are a team of genuine individuals who hold a deep passion for both property and marketing. Collectively, we bring over 70 years of experience in the property market of Norfolk and Suffolk. Our affection for both counties runs deep, and we are enthusiastic about sharing our passion with you.

Colin McKenzie | **Branch Partner**







THE DETAIL_____

Nestled in the heart of Norwich City Centre, this charming flat offers a perfect blend of modern living and urban convenience. With one well-appointed reception room, this space is ideal for both relaxation and entertaining. The flat features a comfortable bedroom, providing a peaceful retreat after a busy day in the vibrant city.

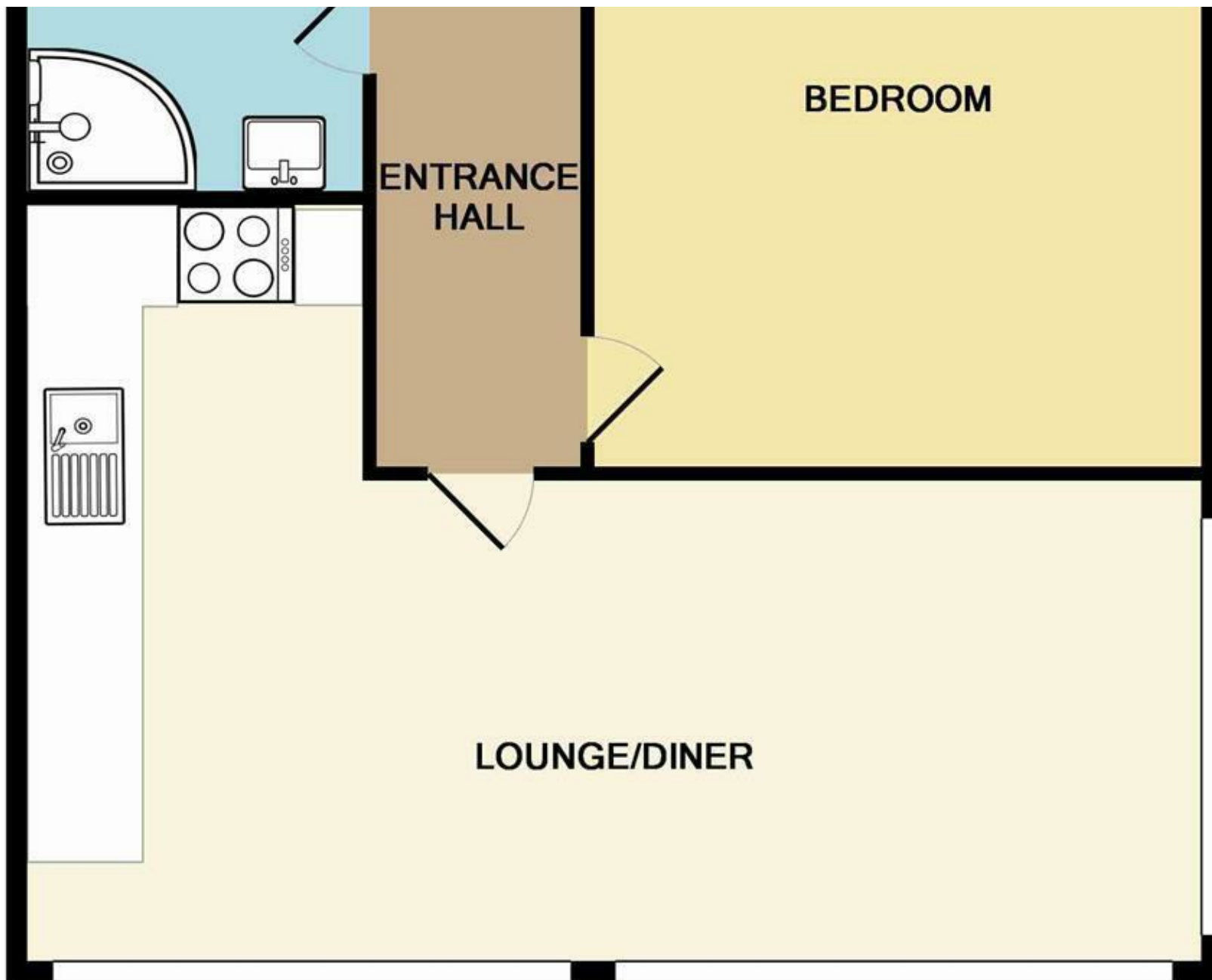
The bathroom is thoughtfully designed, ensuring both functionality and comfort. Living in the city centre means you are just a stone's throw away from an array of shops, restaurants, and cultural attractions, making it an excellent choice for those who appreciate the hustle and bustle of city life.

This flat is perfect for individuals or couples seeking a stylish and convenient home in one of the UK's most historic cities. With its prime location and well-designed living spaces, this property presents a wonderful opportunity for anyone looking to embrace the lively lifestyle that Norwich has to offer. Don't miss the chance to make this delightful flat your new home.



THE HIGHLIGHTS_____

- First Floor Apartment
- Furnished
- Fully Equipped Kitchen
- Double Bedroom
- Integrated Appliances
- Modern Shower Room
- City Centre



Let's talk

01603 660000

sales@abbotfox.co.uk

@abbotfox

EPC RATING -

Disclaimer – In accordance with the Property Misdescriptions Act, the company abbotFox gives notice that all descriptions, references to condition, necessary permissions for use and other details are given in good faith and believed to be correct, but any purchaser should not rely on them as statements of fact, and must satisfy themselves by inspection or other means, as to their accuracy.